



# The Visual Cultures of Classical Greece

Prof. Dimitris Plantzos

# The Visual Cultures of Classical Greece

- Introduction [1/10]
- What is “Greek” about Greek art [8/10]
- Narrativity and story-telling [15/10]
- **Nemea – Olympia – Delphi field trip [19-20/10]**
- Monumentality [22/10]
- The visual cultures of Greek pottery [29/10]
- **National Museum class [8/11; 11:00-13:00]**
- **Midterms [12/11]**
- **Acropolis Museum class [22/11; 15:00-17:00]**
- Materiality [26/11]
- Agency [3/12]
- *Mimesis* [10/12]
- Realism [17/12]

# The Visual Cultures of Classical Greece

- Introduction [1/10]
- What is “Greek” about Greek art [8/10]
- Narrativity and story-telling [15/10]
- Nemea – Olympia – Delphi field trip [19-20/10]
- **Monumentality [22/10]**
- The visual cultures of Greek pottery [29/10]
- National Museum class [8/11; 11:00-13:00]
- Midterms [12/11]
- Acropolis Museum class [22/11; 15:00-17:00]
- Materiality [26/11]
- Agency [3/12]
- *Mimesis* [10/12]
- Realism [17/12]

# Define the “monumental” in art?

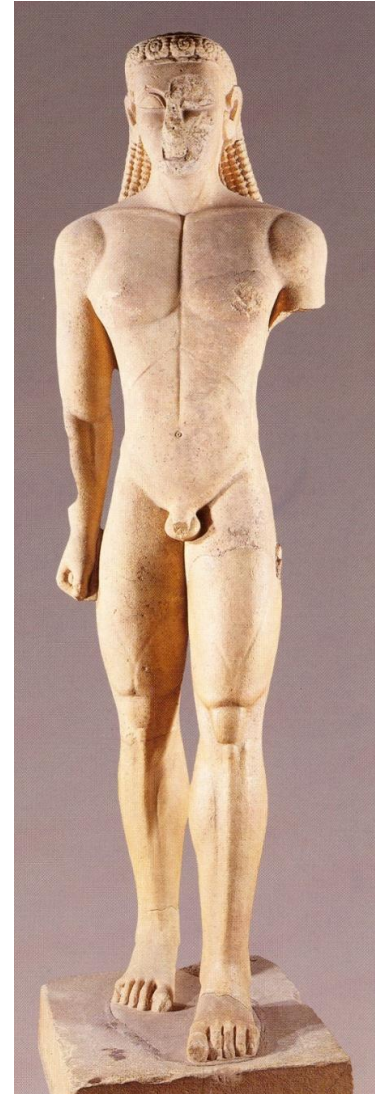
Sculpture survey:

Kaltsas 2007: 186-193

Define the “monumental” in art?

# Define the “monumental” in art?

- Material



# Define the “monumental” in art?

- Material
- Technical achievement



# Define the “monumental” in art?

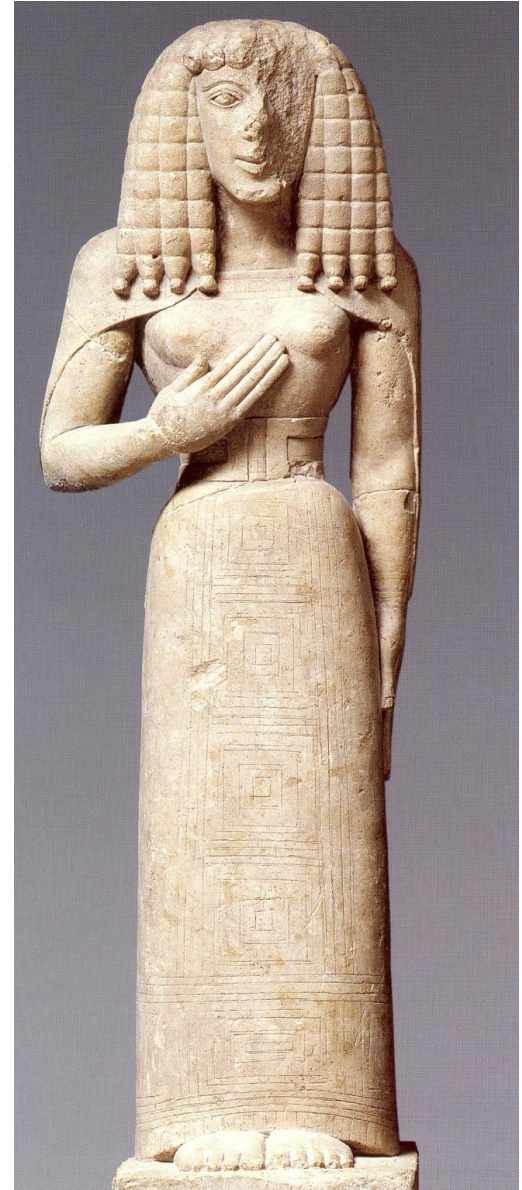
- Material
- Technical achievement





# Define the “monumental” in art?

- Material
- Technical achievement
- Size



# Define the “monumental” in art?

- Material
- Technical achievement
- Size



# Define the “monumental” in art?

- Material
- Technical achievement
- Size
- Function





BA  
TA  
EPI  
AN  
ETC

ΓΑΒΙΣ ΟΡΟΛΟΦΟΝΙΟΣ  
ΣΥΝΝΑΜΜΑΤ

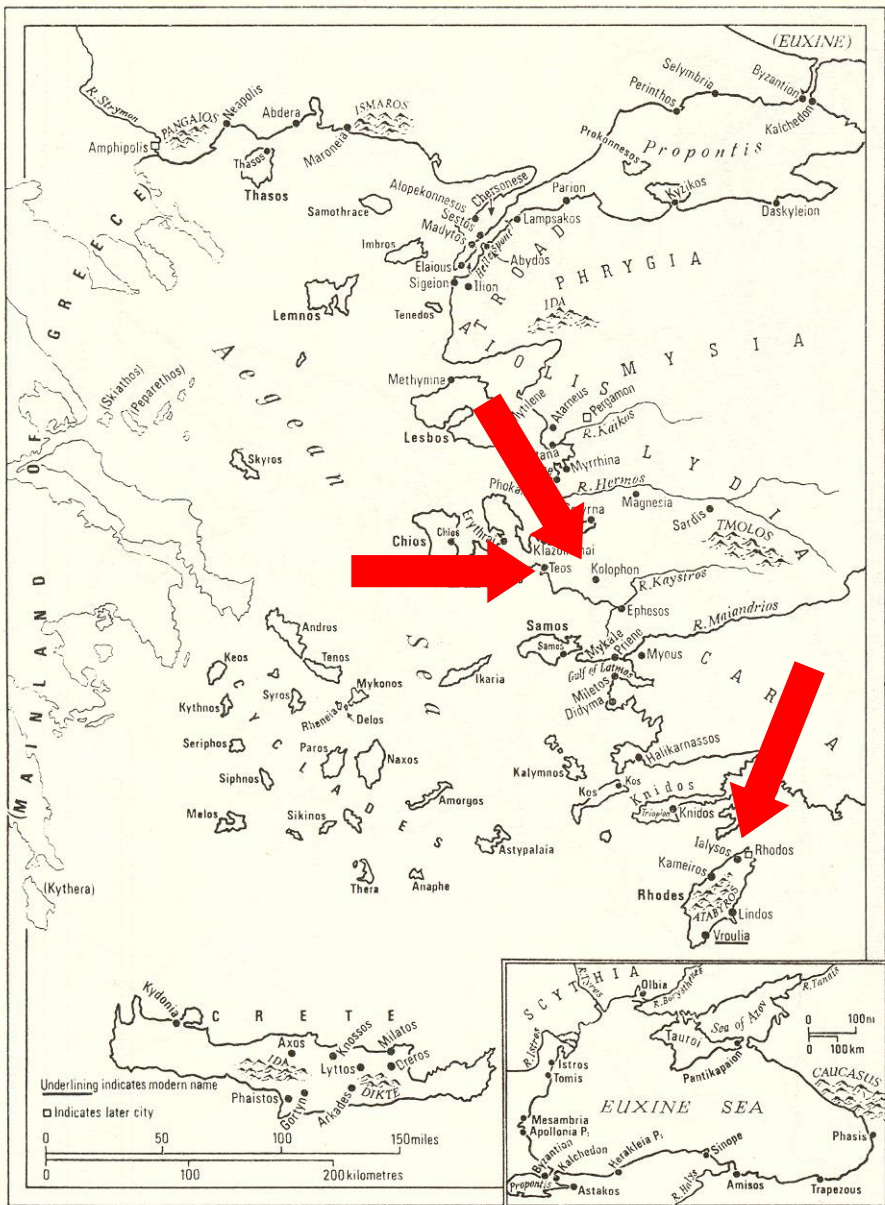
SIS  
MO

ΑΝΑΧΖΑΝΟΡΕΡ Τ

ΒΟΙ ΛΛΥΣΙΟΣ ΒΟΚΑΒΑΣΙΑ

ΣΟΧΙΤΑΜΑΨ//////////////////////ΙΟΤΑΡΠΟΤ 10ΤΑΡΤΣΗΟΤΞΑ13ΒΣΥΠΠ

ΑΡΕΣΙΒΙΟΣ ΟΤΗΙΟΣ



ΓΑΒΙΚ ΟΡΟΛΟΦΟΝΙΟΖ  
 ΖΥΝΝΑΜΜΑΤ

ΑΝΑΞΖΑΝΟΡΕΡ Τ

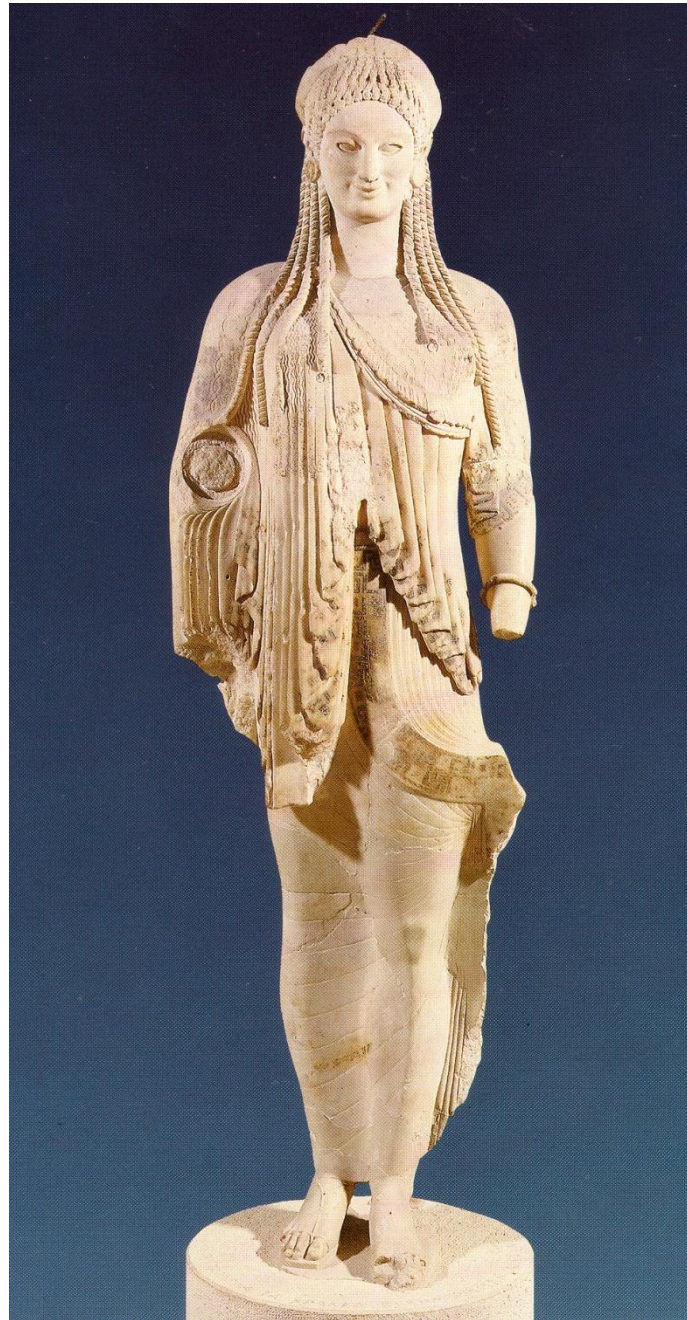
ΒΟΙΛΛΥΖΙΟΖ ΕΘΚΑΒΑΖΙΛ

ΣΟΧΙΤΑΜ ΑΨ /// ΜΟΤΑΡΠΟΤ ΙΟΤΑΡΤΣΗΟΝΤΕΤΑΤΕΒΣ

ΑΡΕΣΙΒΙΟΣ ΟΤΗΙΟΣ



*kouros*



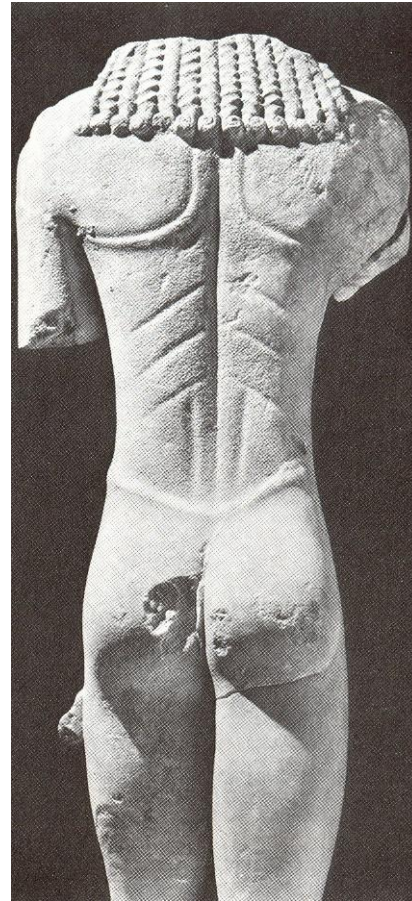
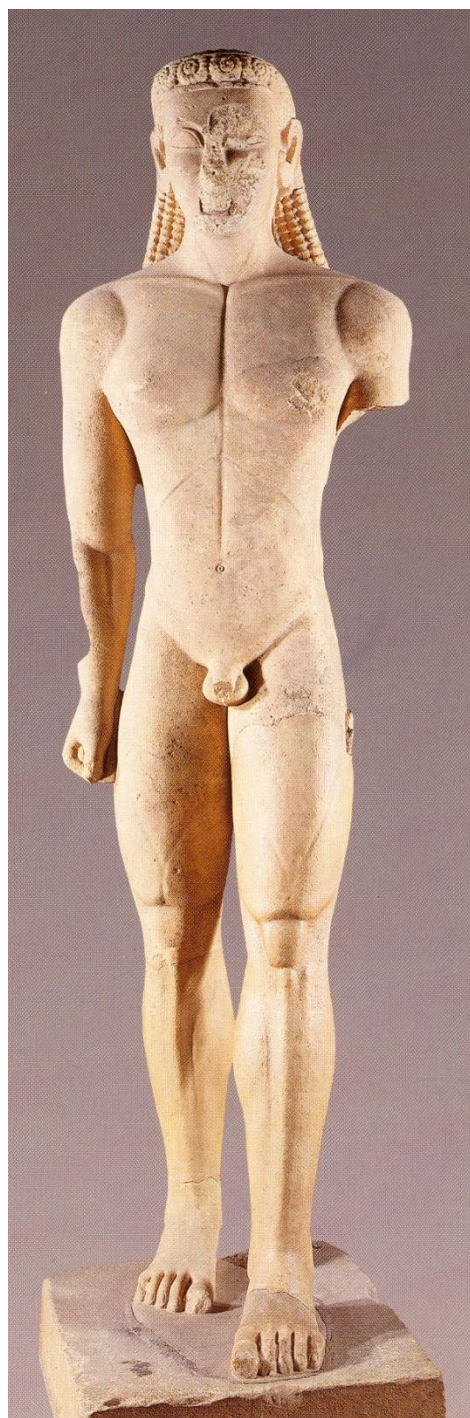
*kore*



# *kouros*



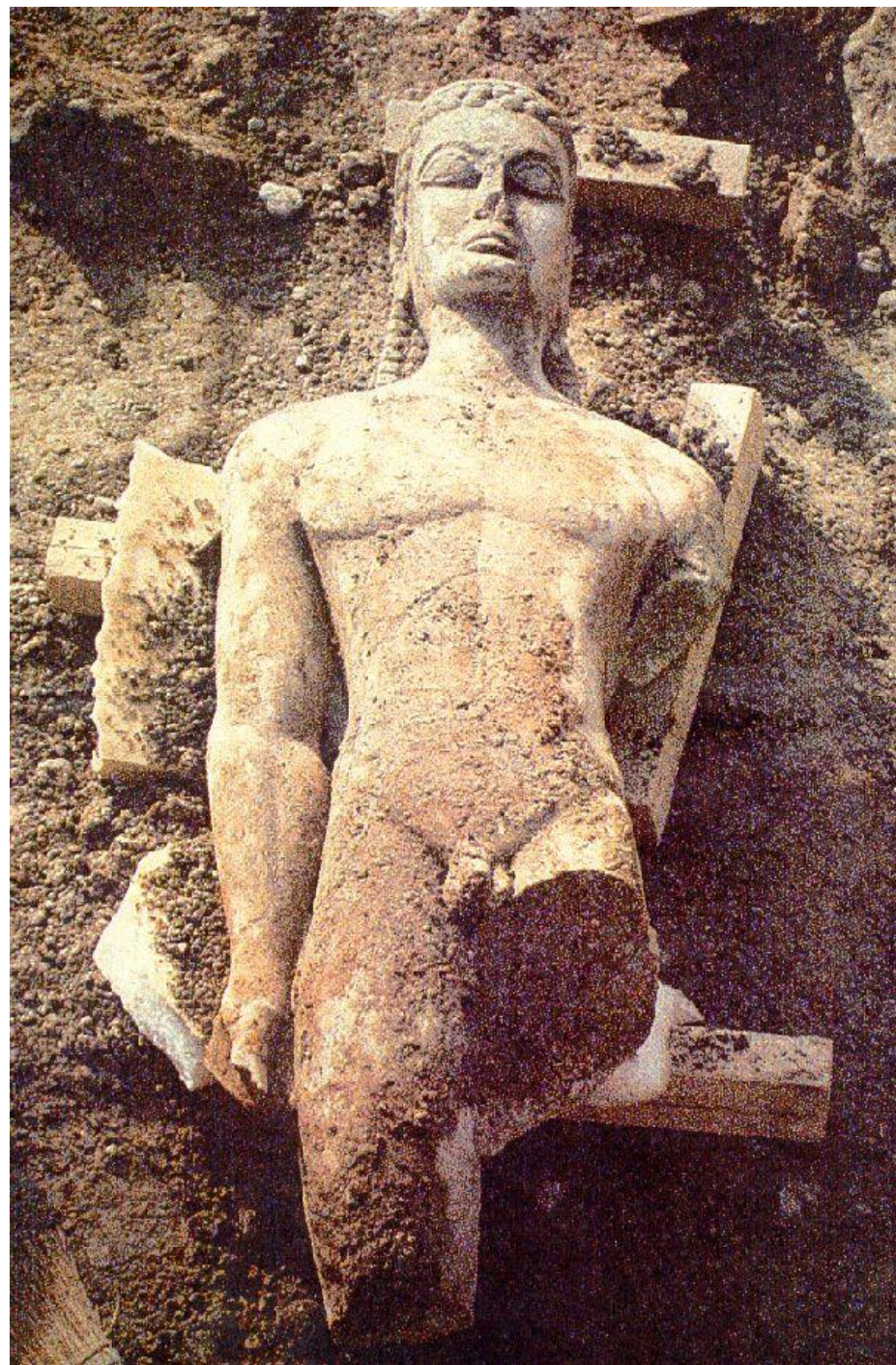
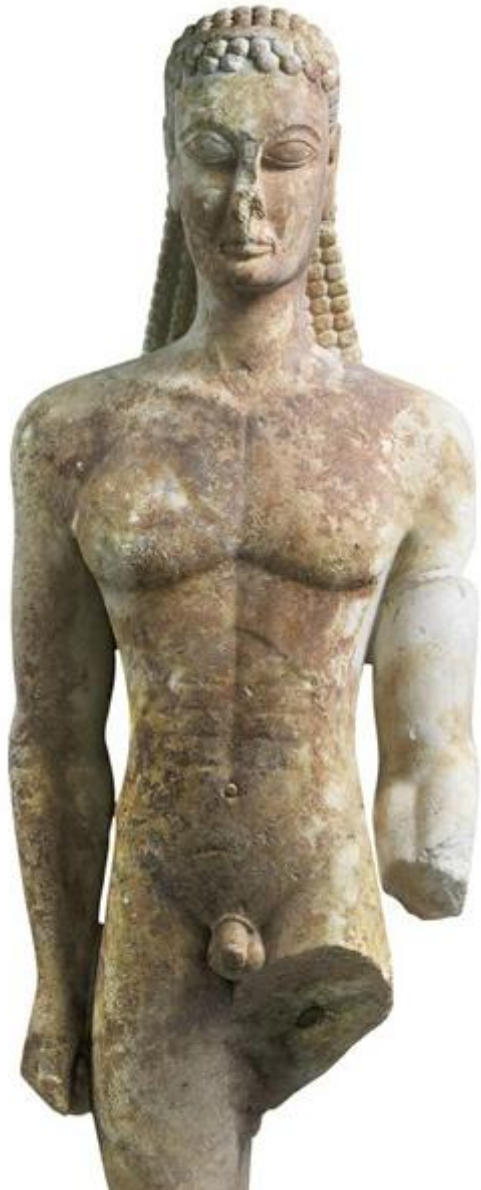
- one of the most characteristic statue types in Greek sculpture
- means 'young man', usually depicts youths
- appeared in the 7<sup>th</sup> century BCE and was used until the end of the Archaic period
- standing naked youth with hands hanging down and attached to the sides, left foot brought forward as if walking
- initially the type had long hair
- frequently life size or bigger (2, 3 and even 10 m tall).



**The Sounion kouros. c. 600-590 BCE.**

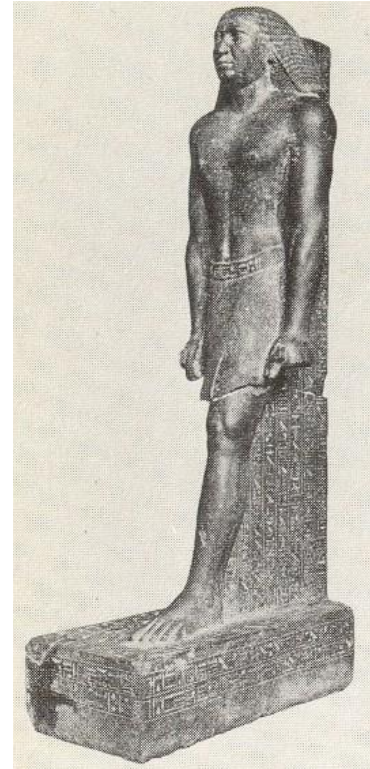
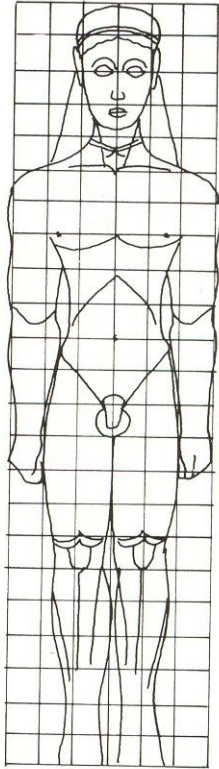
# The Kerameikos kouros.

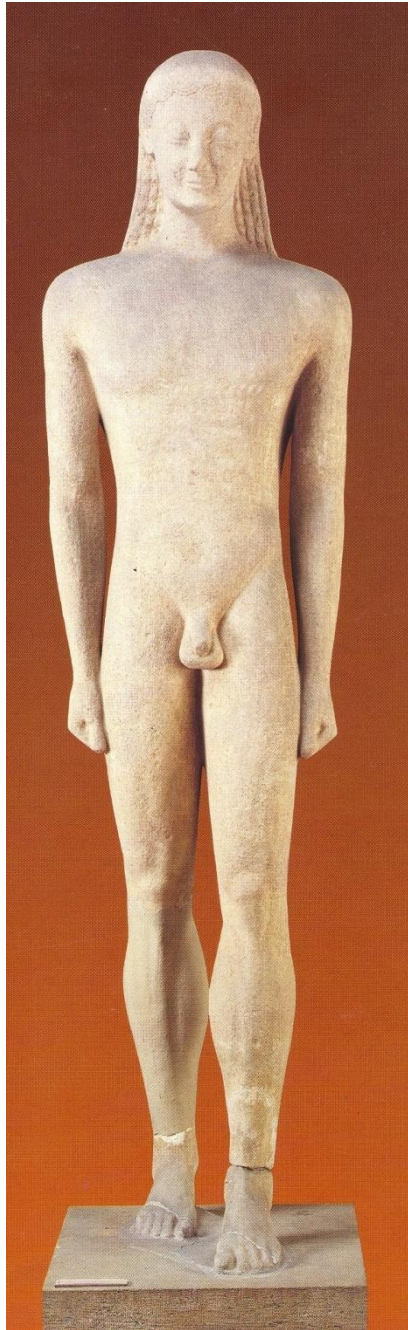
c. 600-580 BCE











**The kouros of Melos.**

**c. 550 BCE**



**East Greek kouros.  
c. 530-20 BCE**



**The kouros of  
Samos. c. 570 BCE**



- female version of the kouros
- young, unmarried girl
- appeared in the 7<sup>th</sup> century and was used until the end of the Archaic period
- standing young woman, usually dressed in a *chiton* and *himation*
- ornate hairstyle
- offering (dove, flower or fruit)
- precious jewellery



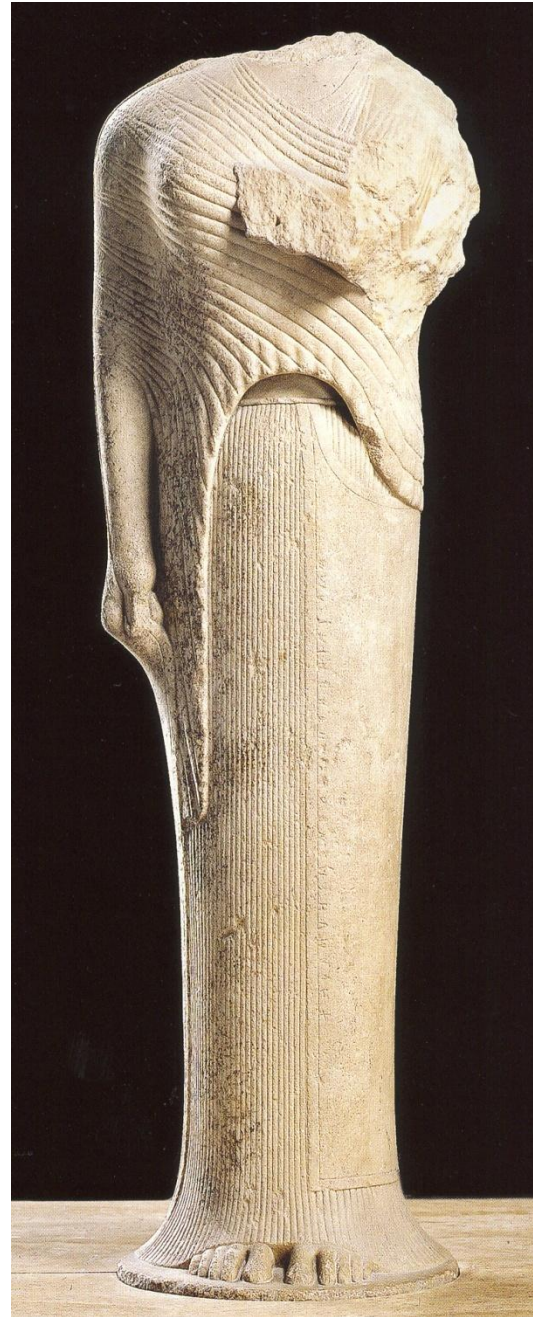
***kore***



**c. 650 BCE**



**c. 650 BCE**



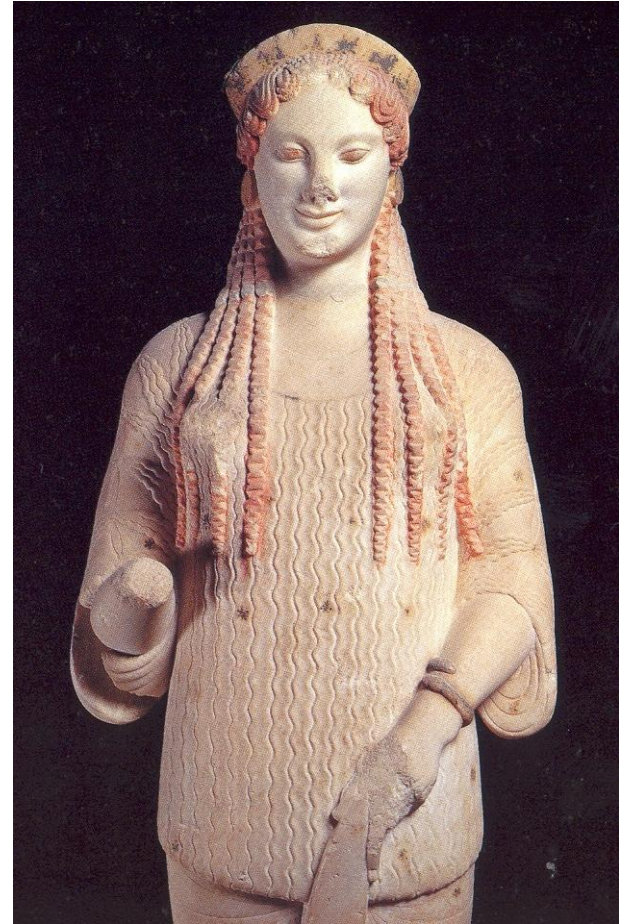
**c. 560 BCE**

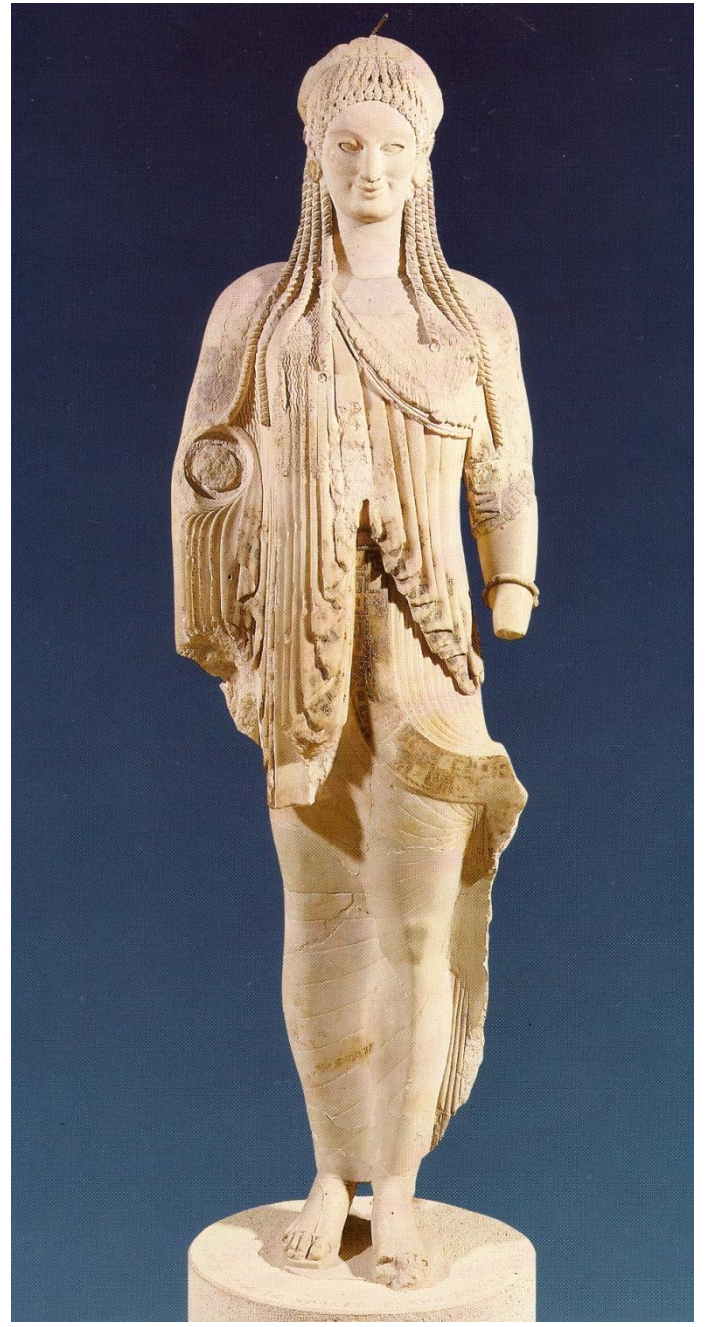
ΧΗΡΑΜΝΗΞΜΑΝΞΘΙΚΕΝΤΗΡΗΙΑΓΑΛΜΑ

**A kore from Samos.**

**c. 560 BCE**

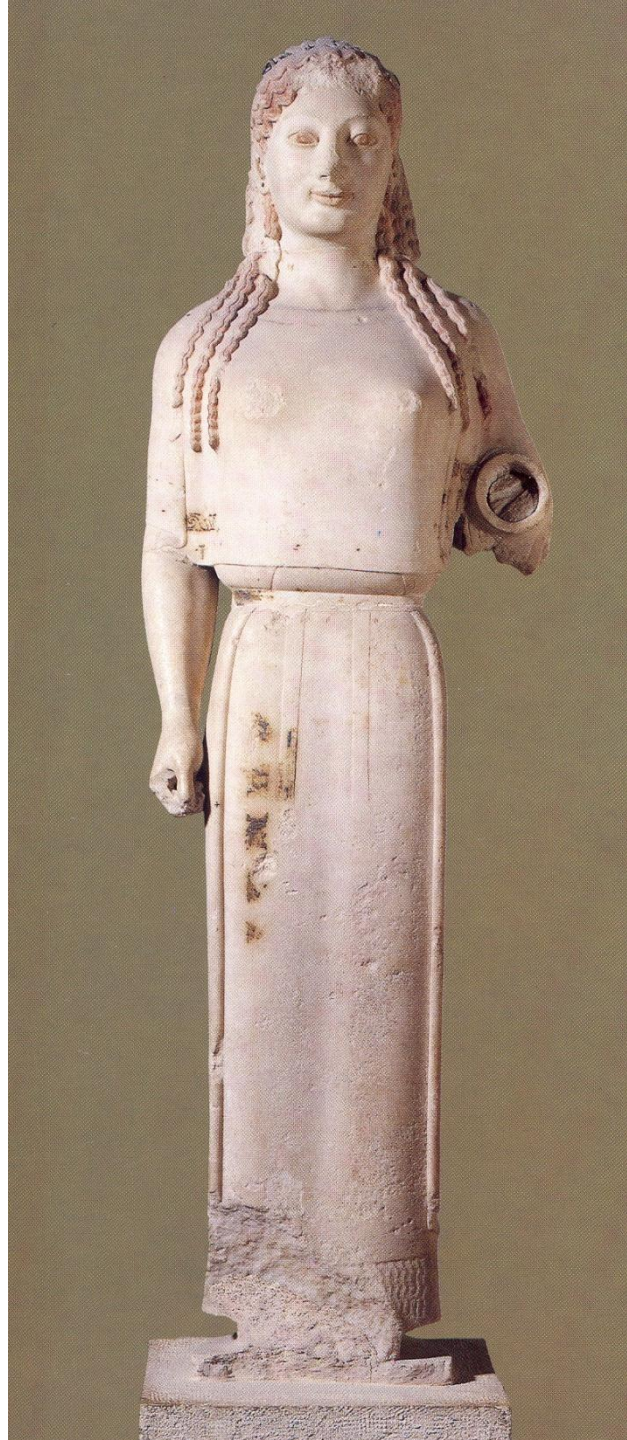












**The Peplos-kore. C. 530 BCE**









ΣΤΕΘΙ: ΚΑΙ ΟΙΚΤΙΡΟΜ ΚΡΟΙΣΟ  
ΠΑΡΑΣ ΕΜΑΘ ΑΝΟΜΤΟΣΗΟΜ  
ΓΟΤΕ ΜΙΓΡΟΜΑ+ΟΙΣ: ΟΛΕΣΕ  
ΘΟΡΟΣ: ΑΡΕΣ

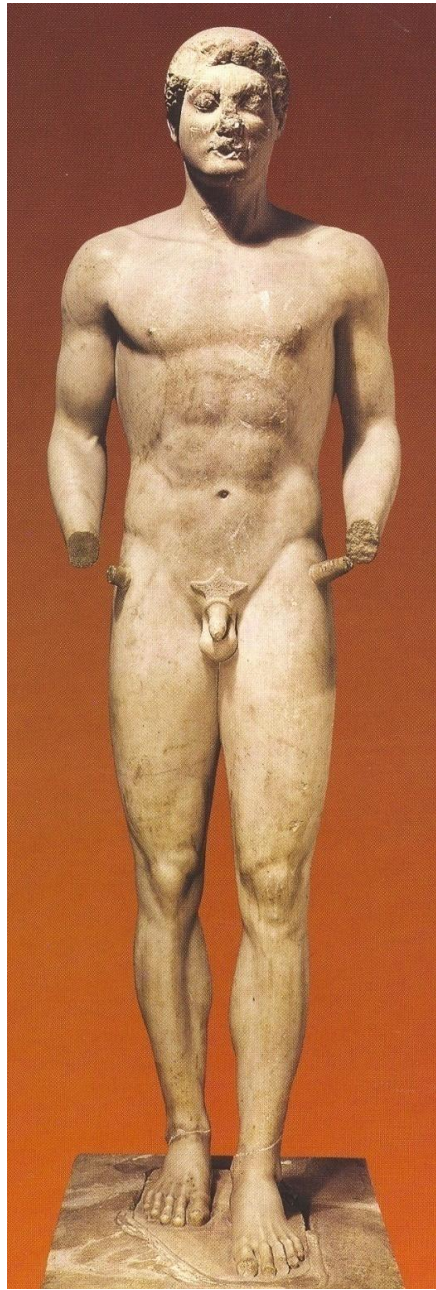






ΣΕΜΑΘΡΑΣ ΚΛΕΙΑΣ  
ΚΟΡΪΚΕ ΚΛΕΖΟΜΑΙ  
ΔΙΕΙΑΜΤΙΛΑΜΟ  
ΠΑΡΑΘΕΟΜΤΟΥΤΟ  
ΛΑΧΟΣΟΜΟΜΑ

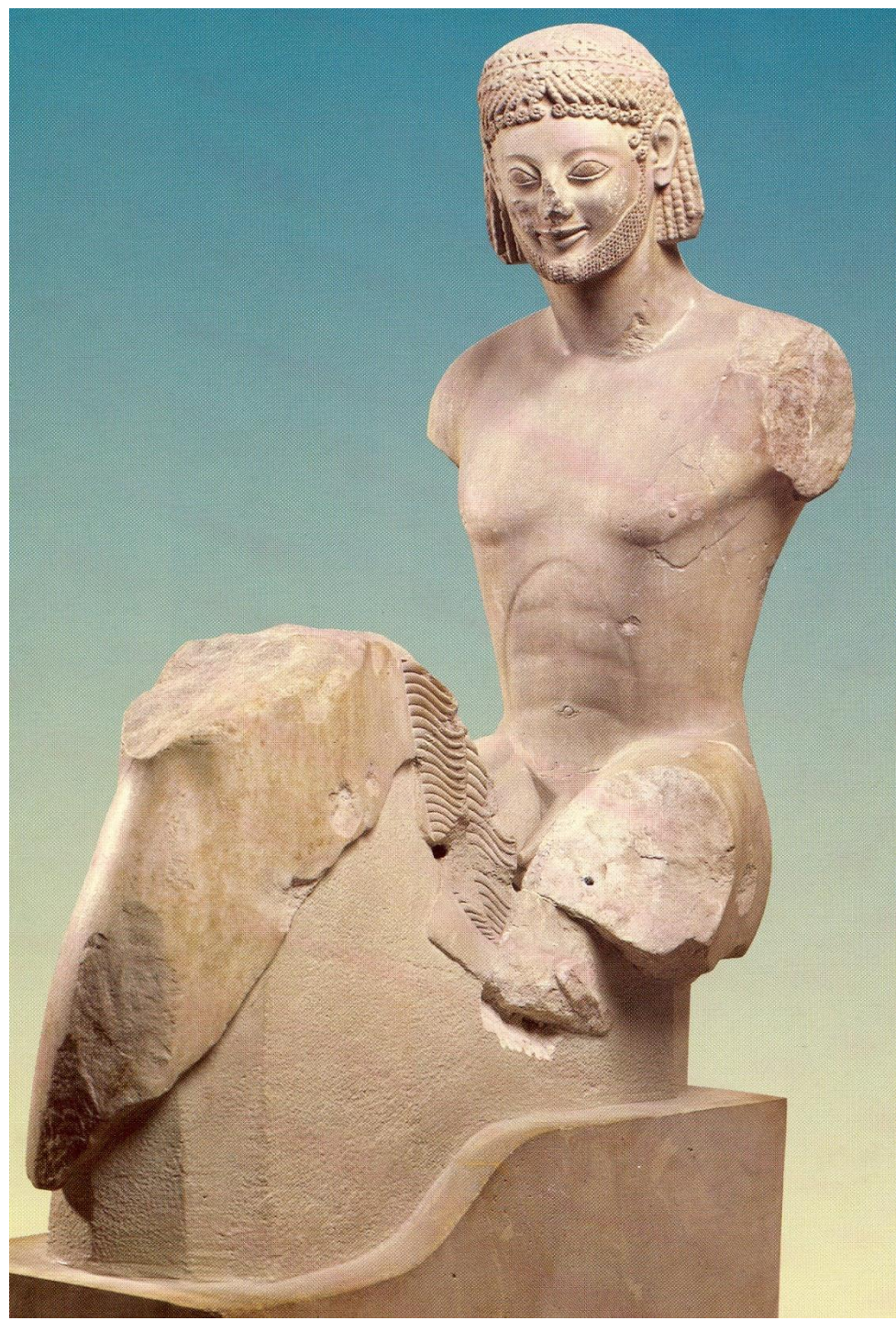






**The Calf-bearer.  
c. 570 - 560 BCE**

**A horseman. c. 550 BCE.**



# The visual cultures of Greek pottery

*Reading:*

Plantzos 2016: 70-75; 86-103.

*Survey:*

Kaltsas 2007: 153-173