



Ancient Greek art: an overview.

Dimitris Plantzos
University of Athens



Εθνικόν και Καποδιστριακόν
Πανεπιστήμιον Αθηνών
— ΙΔΡΥΘΕΝ ΤΟ 1837 —



▼ Course Options

📢 Announcements

📎 Assignments

📁 Documents

2

🔗 Links

✉ Messages

6



dkplantzos



🏠 Portfolio / Ancient Greek art: an overview / Assignments

Ancient Greek art: an overview (75202)

Assignments



Display **10** results



Title	Submission deadline	Submitted	Grade
Midterm Essay 2022	2022-04-14 00:00:00 (left 3 days 9 hours 31 minutes)	<input type="checkbox"/>	

Displayed 1 till 1 from 1 total results

« < 1 > »

[κεραμεύς] *kerameus*

Lecture 4

Kerameus:

the art of Greek pottery.

Course structure

1. *Techne*: what is 'Greek' about Greek art? (6/3)

Section 1: Early Greece, ca. 1200-480 BCE

1. ***Sema*: commemorating the dead in Early Greece. (Dr Harokopos)**
2. ***Anathema*: gifts to the gods in Greek sanctuaries. (Dr Harokopos)**
3. ***Kerameus*: the art of Greek pottery. (Dr Harokopos)**
4. *Agalma*: pleasing immortals and mortals alike. (3/4)

Section 2: Classical Greece, ca. 480-336 BCE

1. *Mimesis*: nature as aesthetic ideal. (10/4)
2. *Skiagraphia*: painting with shadows. (8/5)
3. *Hieron*: visiting a Greek sanctuary. (15/5)

Section 2: Art in the Hellenistic World, ca. 336-30 BCE

1. *Pathos*: sculpture in the Hellenistic period. (22/5)
2. *Eikon*: immortalising the mortals. (29/5)

Course structure

1. *Techne*: what is 'Greek' about Greek art? (6/3)

Section 1: Early Greece, ca. 1200-480 BCE

1. *Sema*: commemorating the dead in Early Greece. (Dr Harokopos)
2. *Anathema*: gifts to the gods in Greek sanctuaries. (Dr Harokopos)
3. *Kerameus*: the art of Greek pottery. (Dr Harokopos)
4. *Agalma*: pleasing immortals and mortals alike. (3/4)

Section 2: Classical Greece, ca. 480-336 BCE

1. *Mimesis*: nature as aesthetic ideal. (10/4)
2. *Skiagraphia*: painting with shadows. (8/5)
3. *Hieron*: visiting a Greek sanctuary. (15/5)

Section 2: Art in the Hellenistic World, ca. 336-30 BCE

1. *Pathos*: sculpture in the Hellenistic period. (22/5)
2. *Eikon*: immortalising the mortals. (29/5)

Greek art chronological art:

- Bronze Age (3200-1100 BCE)
- Submycenaean (1100-1050 BCE)
- Protogeometric period (1050-900 BCE)
- Geometric period (900-700 BCE)
- **Archaic period (700-480 BCE)**
- Classical period (480-336 BCE)
- Hellenistic period (336-31 BCE)

Reading:

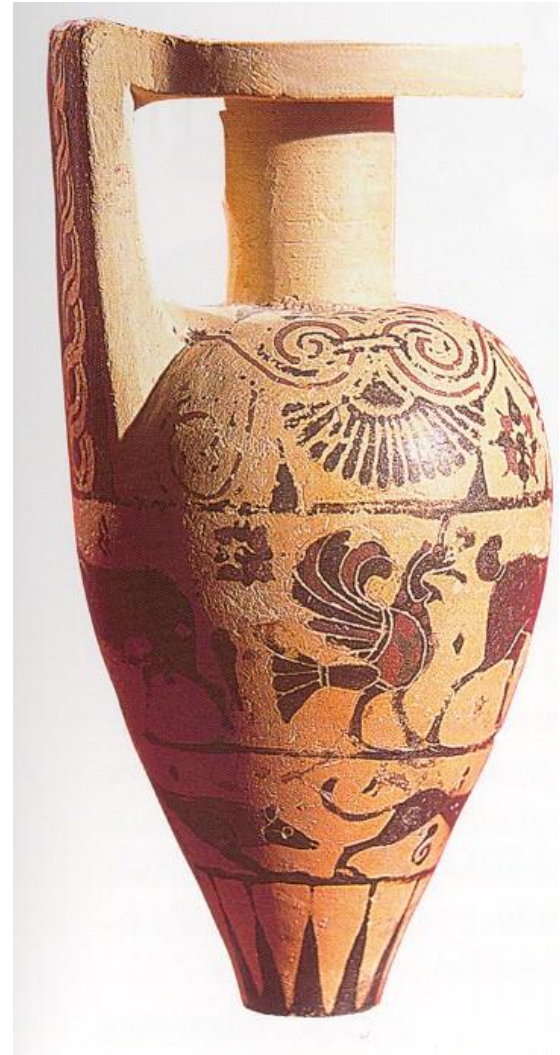
- Plantzos 2016: ch. 3.
- National Archaeological Museum:
https://www.latsis-foundation.org/content/elib/book_14/nam_en.pdf (pp. 187-196)
- Kerameikos: <https://www.latsis-foundation.org/eng/e-library> (pp. 116-173)

Black-figure vase painting:



Black-figure vase painting:

- invented by Corinthian potters in the 7th century BCE
- adopted by Athenian pottery workshops around 630 BCE
- it combined the techniques of silhouette and incision
- it frequently used added colours.



Black-figure vase painting:

- invented by Corinthian potters in the 7th century BCE
- adopted by Athenian pottery workshops around 630 BCE
- it combined the techniques of silhouette and incision
- it frequently used added colours.



Black-figure vase painting:

- invented by Corinthian potters in the 7th century BCE
- adopted by Athenian pottery workshops around 630 BCE
- it combined the techniques of silhouette and incision
- it frequently used added colours.

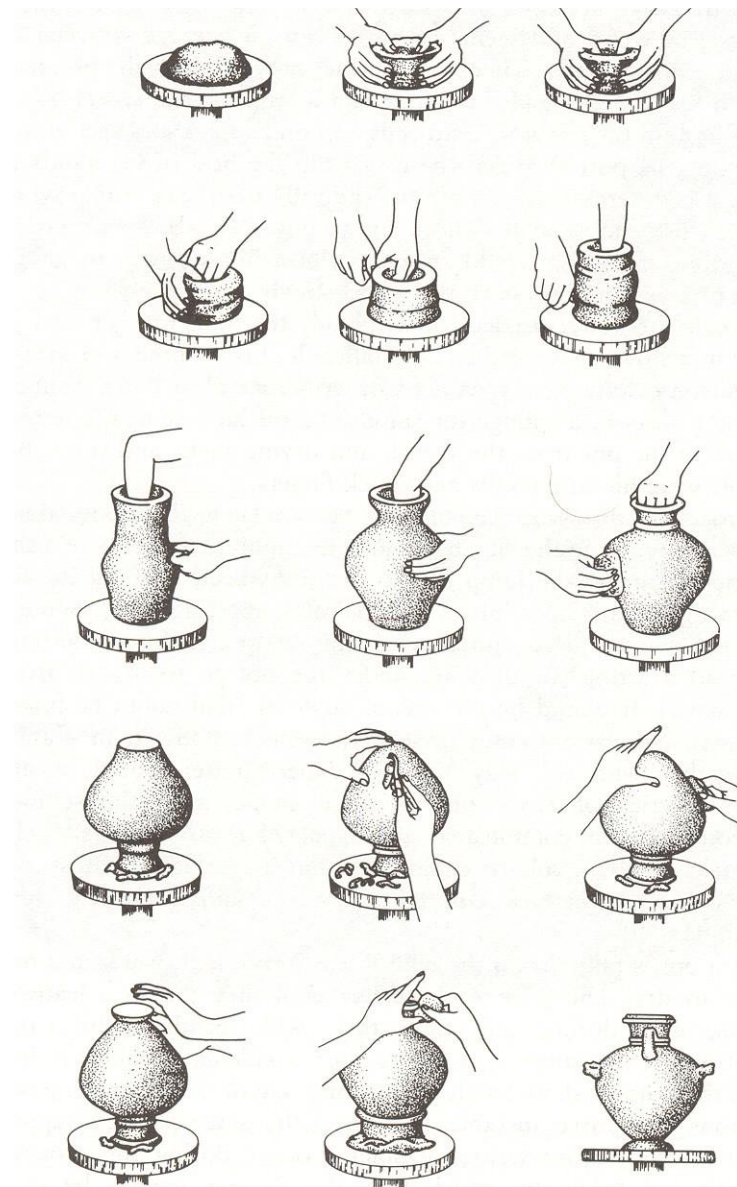
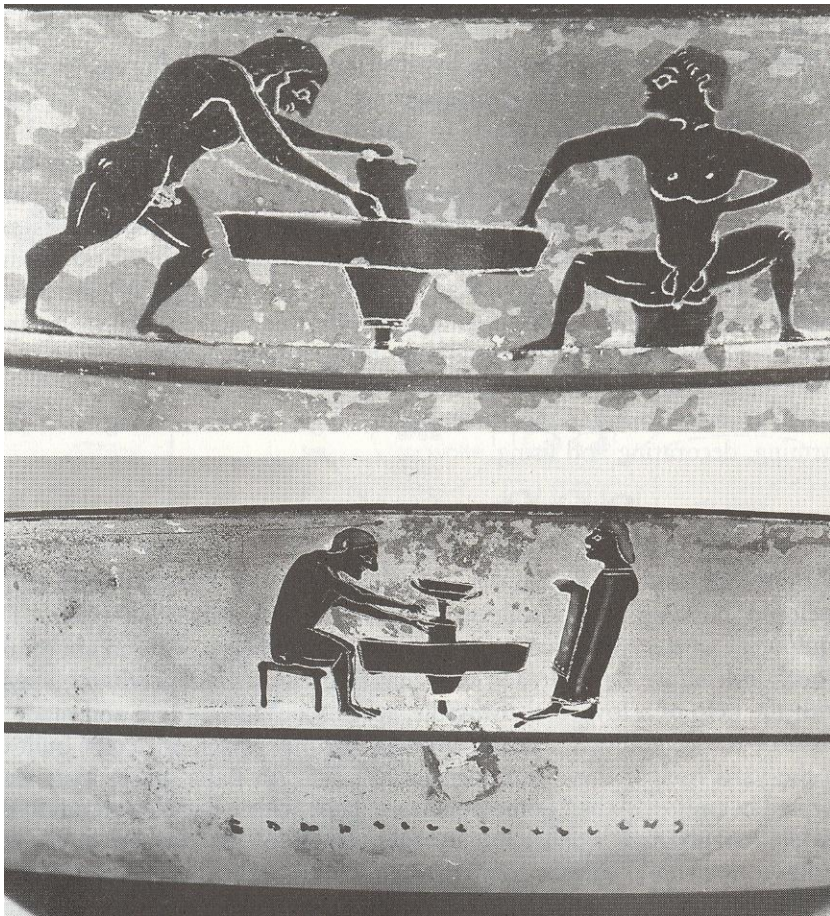


Black-figure vase painting:

- invented by Corinthian potters in the 7th century BCE
- adopted by Athenian pottery workshops around 630 BCE
- it combined the techniques of silhouette and incision
- it frequently used added colours.









Technical process:



- a suspension of clay combined with some form of alkali (e.g. potash which can be made from wood ash)
- during the firing temperature in the kiln initially reached 800°C in **oxidising conditions** (with the vents in the kiln open)
- then comes a **reduction phase** (without oxygen) at a temperature of up to 945°C at which point the carbon monoxide in the atmosphere of the kiln reacts with the ferric oxide (Fe_2O_3) contained in the clay to create ferrous oxide (FeO), which has a black colour and crystallises to create a glossy appearance
- $3\text{Fe}_2\text{O}_3 + \text{CO} \rightarrow 2\text{Fe}_3\text{O}_4 + \text{CO}_2$
- third and final phase: once again **oxidising**, surfaces initially left the colour of the clay returned to their red colour, but the painted areas, which had already stabilised, remained shiny black, covered in 'glaze'





**Athenian black-figure amphora.
c. 615-605 BCE**



**Athenian black-figure lebes.
c. 580 BCE**



**Athenian black-figure lebes.
c. 580 BCE**



**Athenian black-figure lebes.
c. 580 BCE**



**Athenian black-figure
krater.
c. 570-565 BCE**

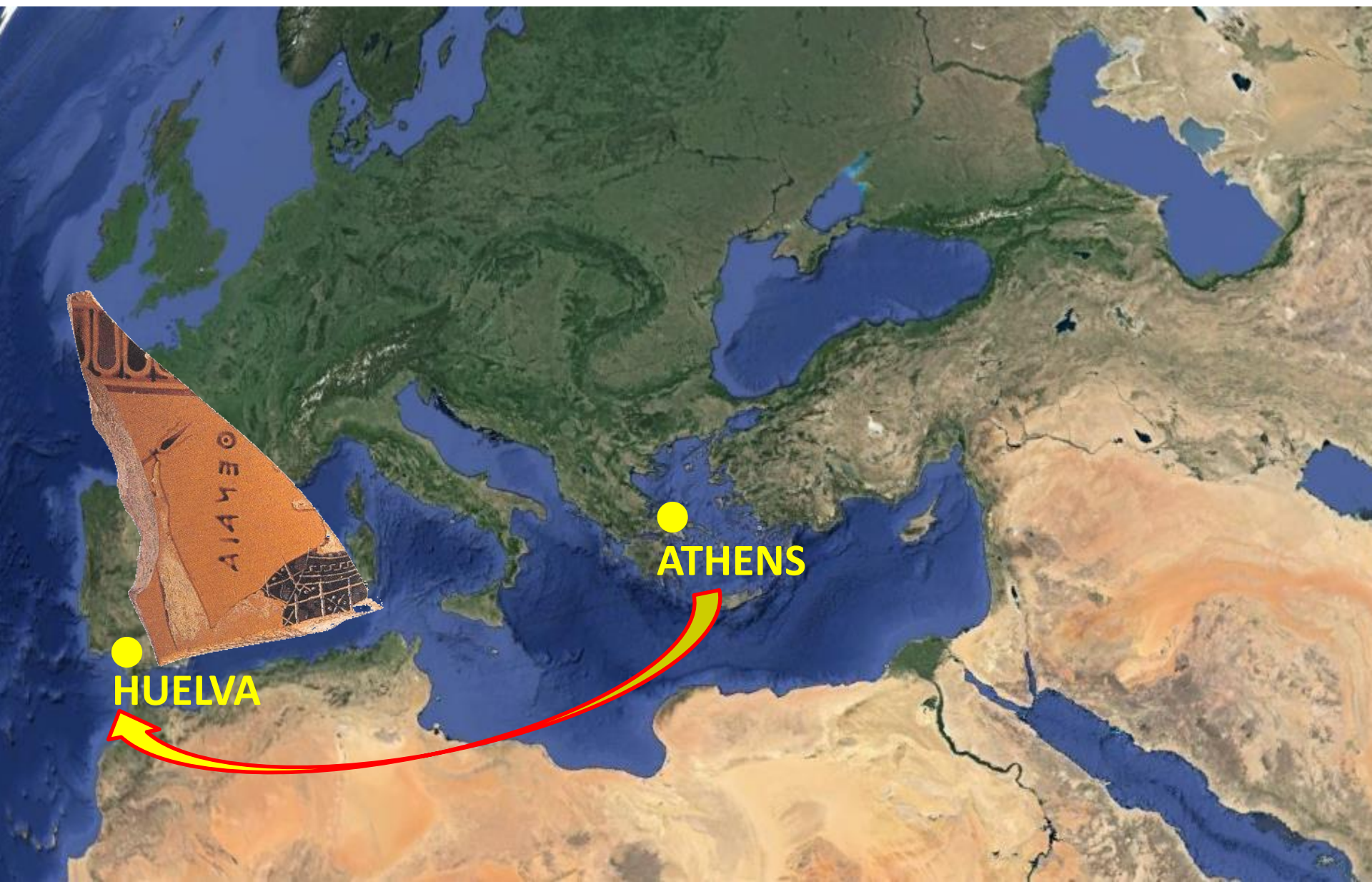




ETRURIA

ATHENS





HUELVA

ATHENS



**Athenian black-figure
amphora. c. 530 BCE**



**Athenian black-figure
amphora. c. 530 BCE**



**Athenian black-figure
kylix. c. 540 BCE**



**Athenian black-figure
amphora. c. 540 BCE**



**Athenian black-figure
lekythos. c. 550 BCE**



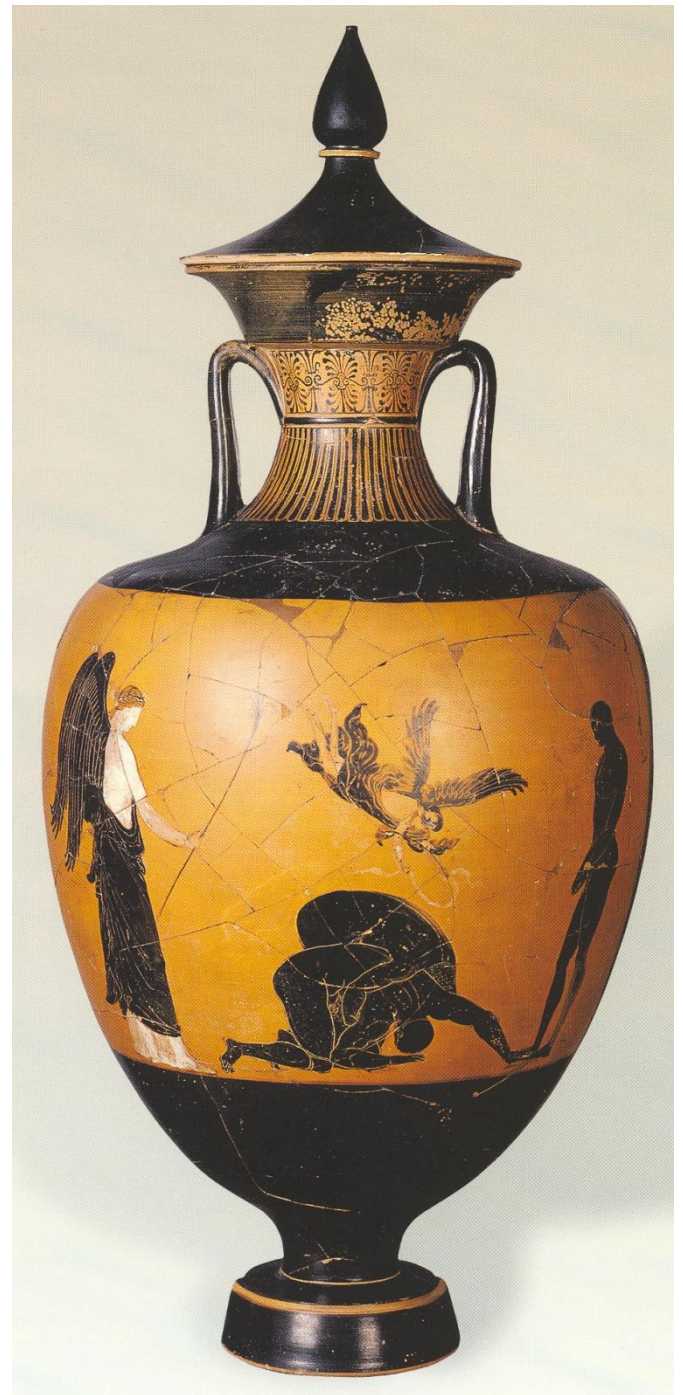
**Athenian black-figure hydria.
c. 520-510 BCE**



**Athenian black-figure amphora.
c. 520-510 BCE**



**Panathenaic amphora.
c. 490 BCE**



Red-figure vase painting:



Red-figure vase painting:

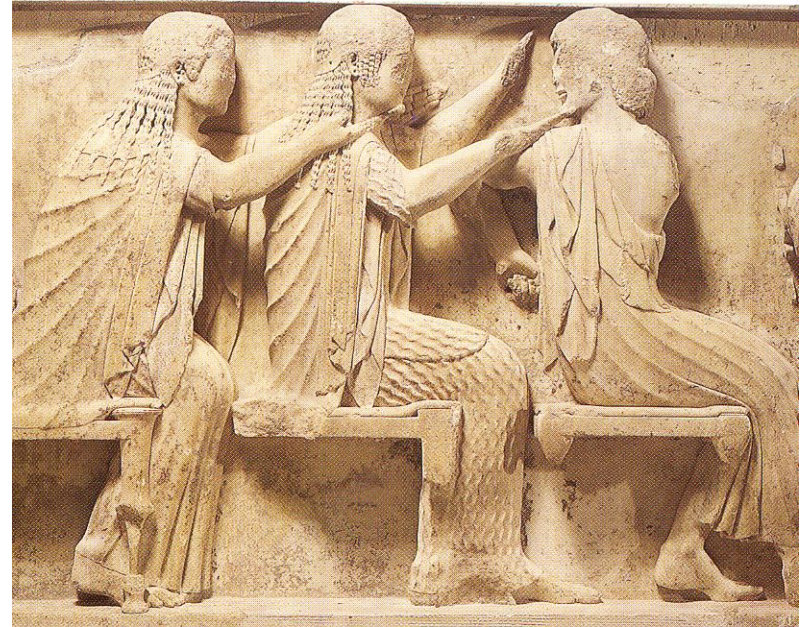
- appeared in Athens around 530 BCE
- dominated Attic pottery until the end of the 4th century BCE
- depicts red, *reserved* figures (the colour of the clay) on a background which was painted black
- complete reverse of the black figure style
- uses painted lines or thick black brush marks ('relief lines') to complete the outline of the figure and render anatomical detail



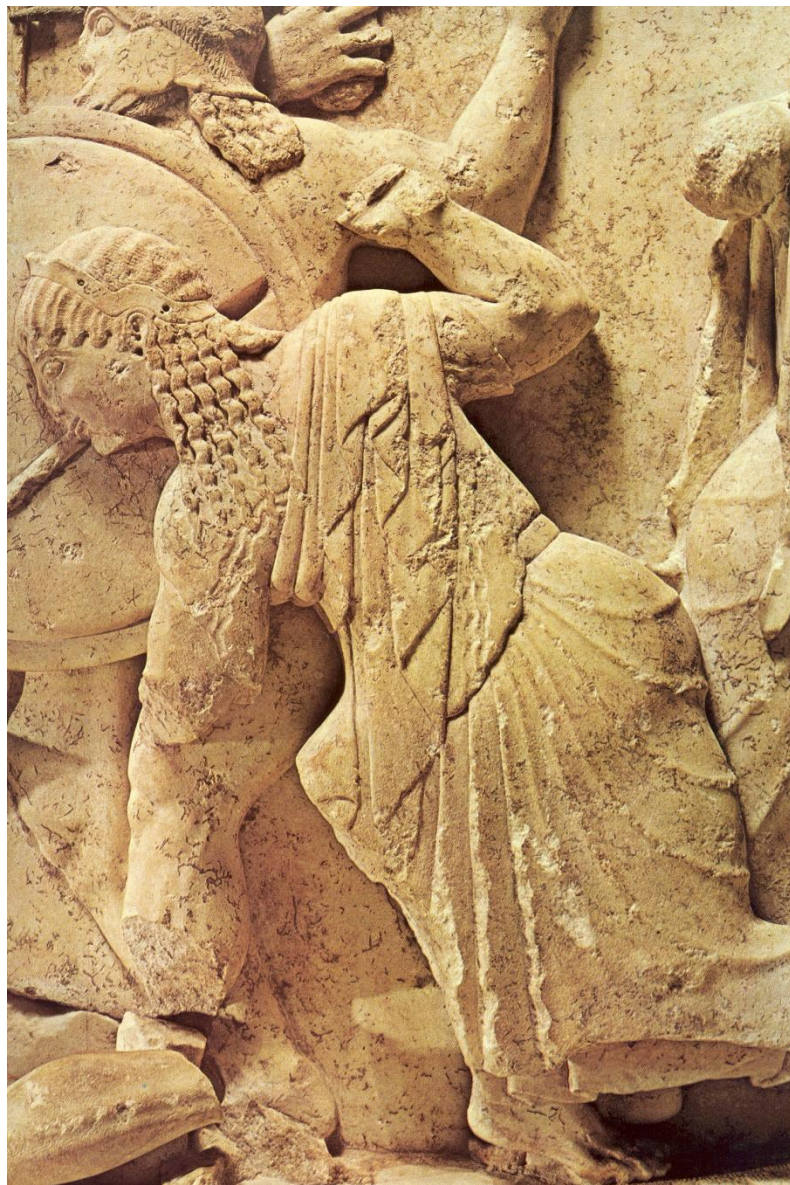
Red-figure vase painting:

- appeared in Athens around 530 BCE
- dominated Attic pottery until the end of the 4th century BCE
- depicts red, *reserved* figures (the colour of the clay) on a background which was painted black
- complete reverse of the black figure style
- uses painted lines or thick black brush marks ('relief lines') to complete the outline of the figure and render anatomical detail



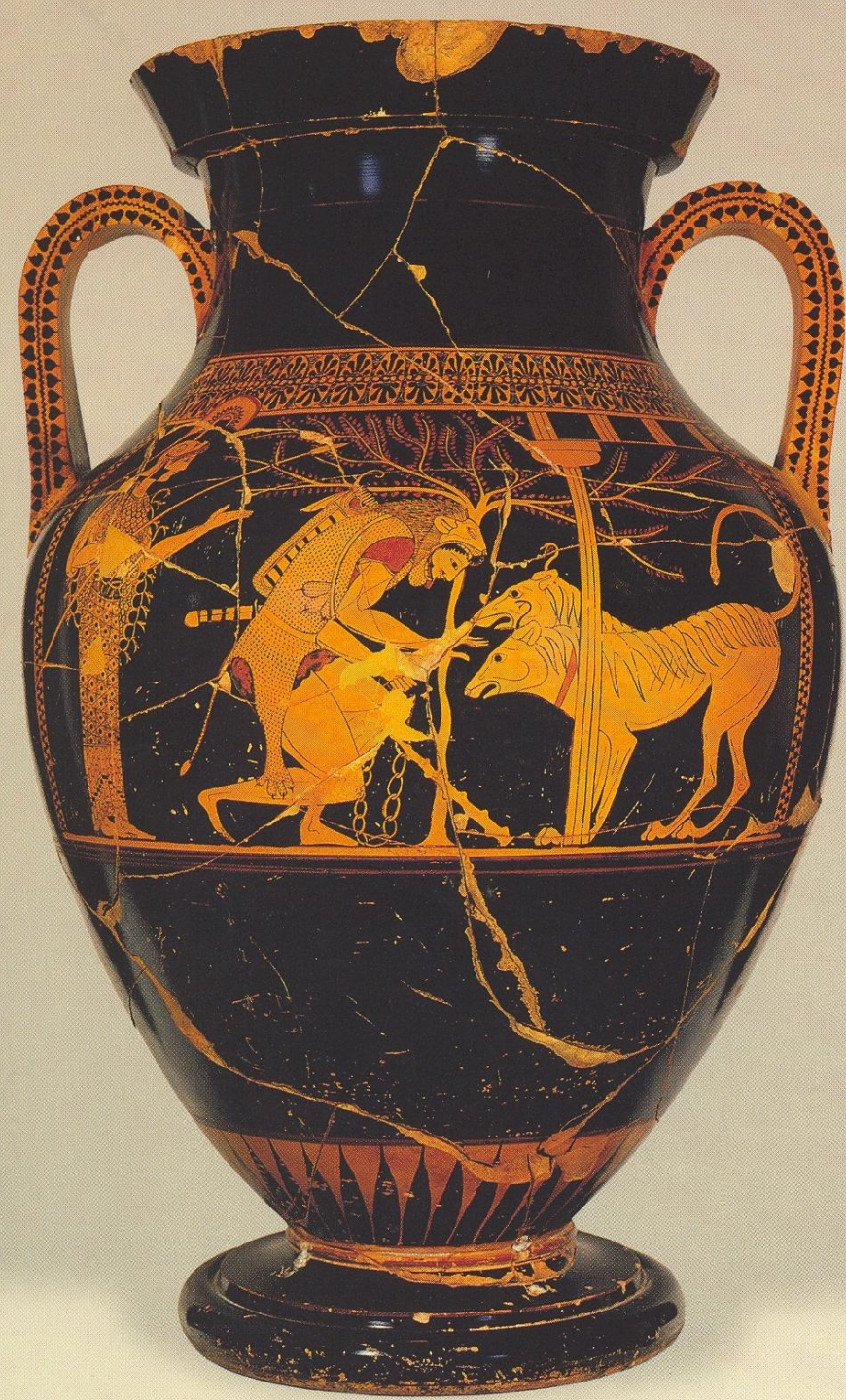


Delphi, the Siphnian Treasury.
c. 525 BCE





Αττικός «δηλωσσοφ»
σάφορος π. 515 π.χ.



**Athenian “bilingual” amphora.
c. 520 BCE**





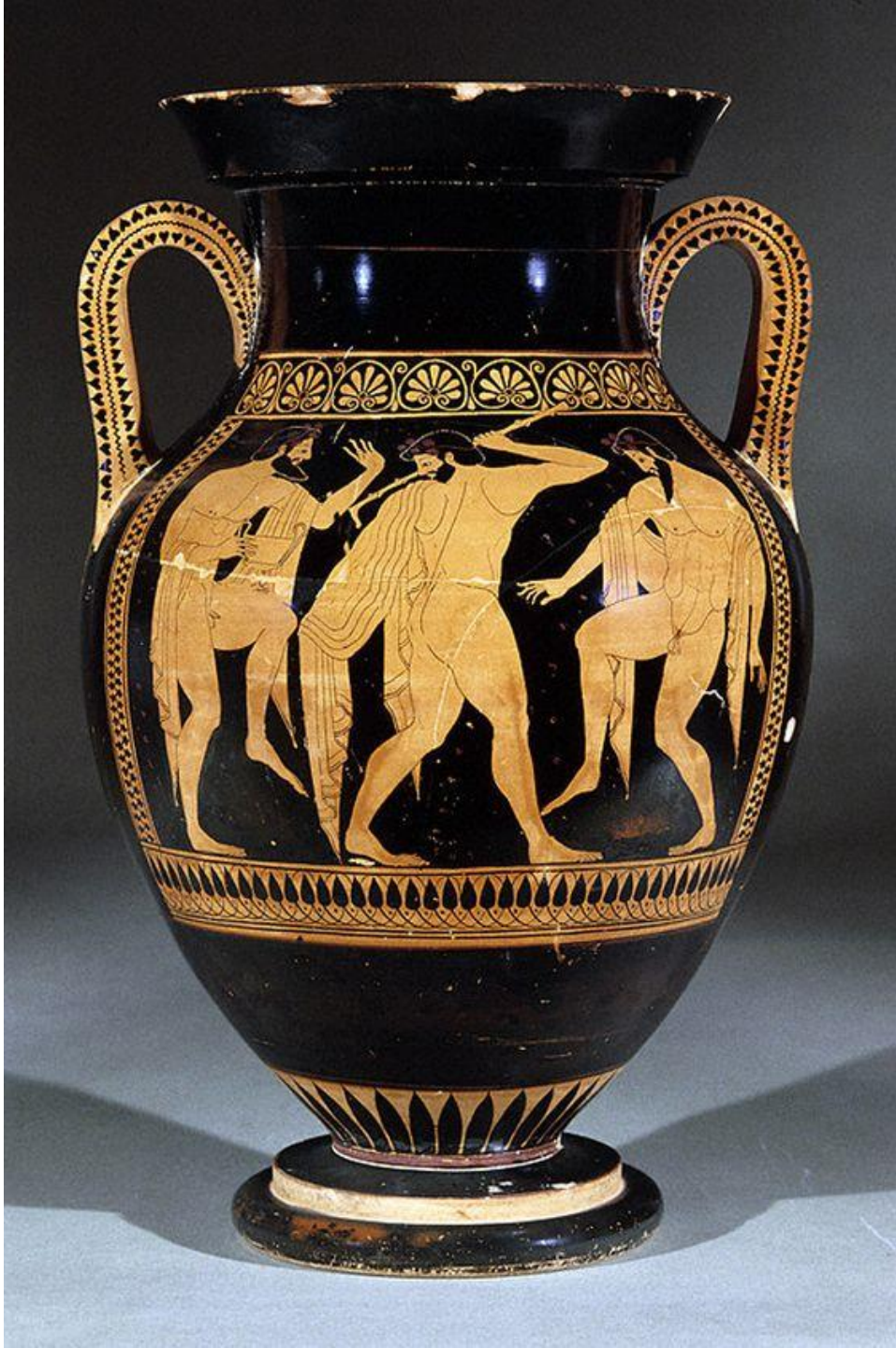
Athenian red-figure krater. c. 515-510 BCE





Athenian votive relief.
c. 510-500 BCE





ΕΑΡΡΩΛΕΝ
ΕΝΘΥΜΙΔΕΝ Η Ο ΓΟΝΙΟ
ΗΟΣΟΝΔΕΠΟΤΕΕΝΦΡΟΝΙΟΝ

**Athenian red-figure amphora.
c. 510 BCE**



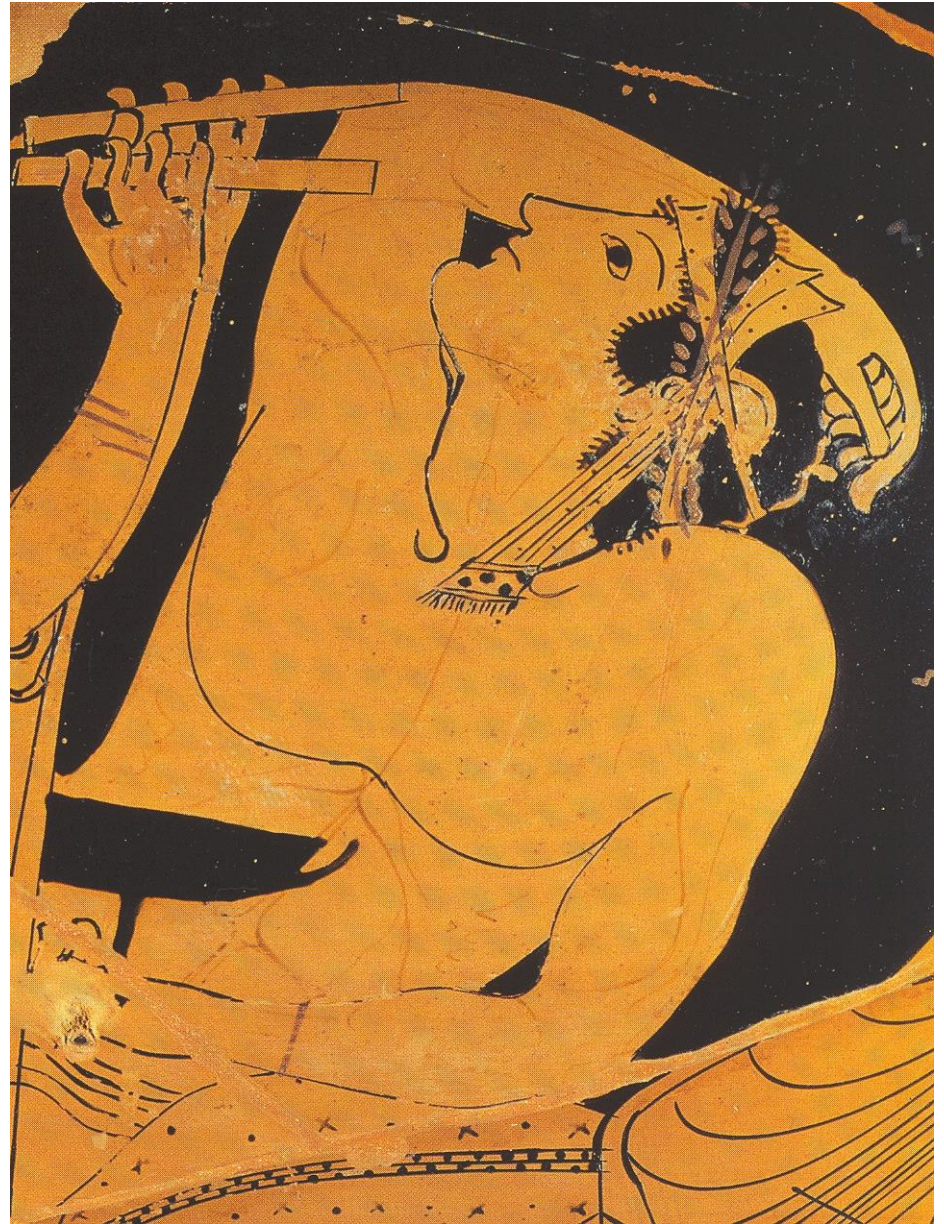
**Athenian red-figure hydria.
c. 510 BCE**



**Athenian red-figure hydria.
c. 510 BCE**



**Athenian red-figure
stamnos. c. 515 BCE**





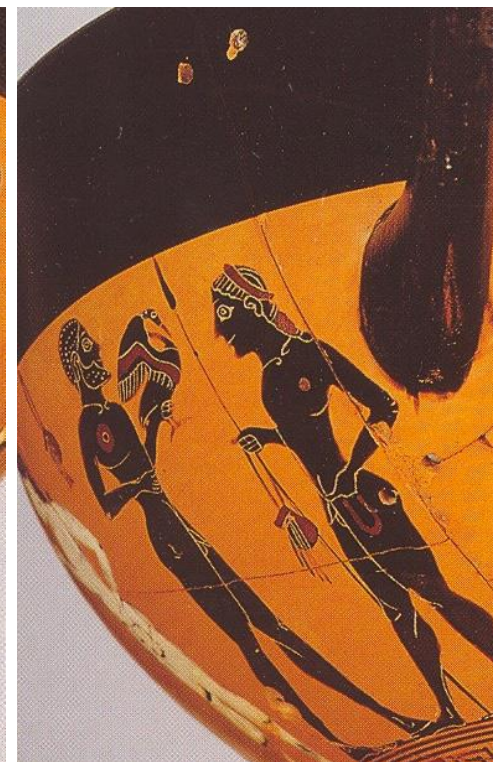
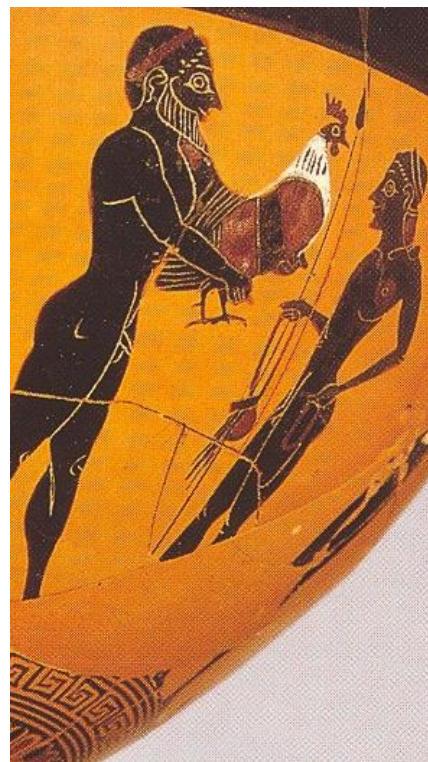
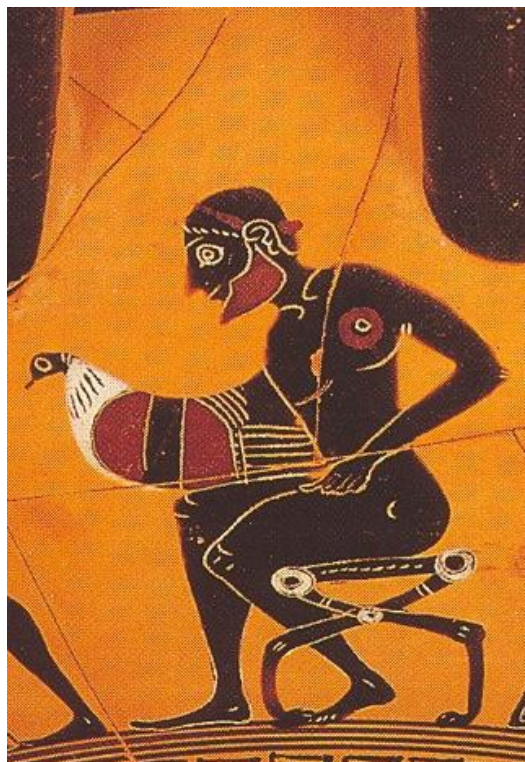
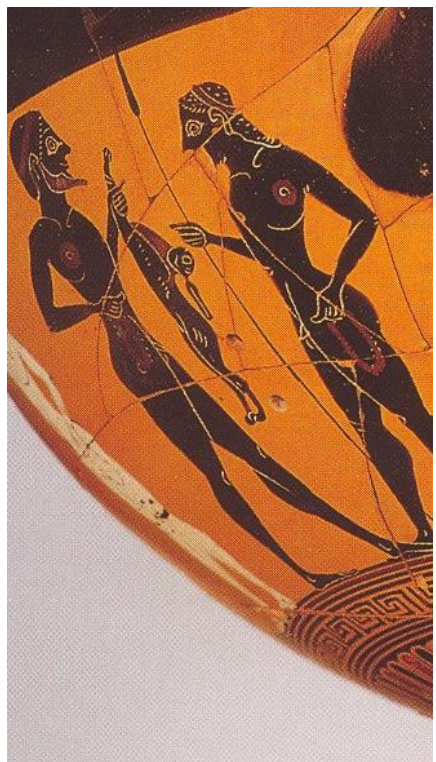


ho pais kalos















**Athenian red-figure amphora.
c. 490 BCE**



