



Ancient Greek art: An overview.

Dimitris Plantzos
University of Athens

Course structure

1. *Techne*: what is 'Greek' about Greek art? (27/2)

Section 1: Early Greece, ca. 1200-480 BCE

1. *Sema*: commemorating the dead in Early Greece. (5/3)
2. *Anathema*: gifts to the gods in Greek sanctuaries. (12/3)
3. *Kerameus*: the art of Greek pottery. (19/3)
4. *Agalma*: pleasing immortals and mortals alike. (26/3)

Section 2: Classical Greece, ca. 480-336 BCE

1. *Mimesis*: nature as aesthetic ideal. (2/4)
2. *Skiagraphia*: painting with shadows. (23/4)
3. *Hieron*: visiting a Greek sanctuary. (30/4)

Section 2: Art in the Hellenistic World, ca. 336-30 BCE

1. *Pathos*: sculpture in the Hellenistic period. (7/5)
2. *Eikon*: immortalising the mortals. (14/5)

Course structure

1. *Techne*: what is 'Greek' about Greek art? (27/2)

Section 1: Early Greece, ca. 1200-480 BCE

1. *Sema*: commemorating the dead in Early Greece. (5/3)
2. *Anathema*: gifts to the gods in Greek sanctuaries. (12/3)
3. *Kerameus*: the art of Greek pottery. (19/3)
4. *Agalma*: pleasing immortals and mortals alike. (26/3)

Section 2: Classical Greece, ca. 480-336 BCE

1. *Mimesis*: nature as aesthetic ideal. (2/4)
2. *Skiagraphia*: painting with shadows. (23/4)
3. *Hieron*: visiting a Greek sanctuary. (30/4)

Section 2: Art in the Hellenistic World, ca. 336-30 BCE

1. *Pathos*: sculpture in the Hellenistic period. (7/5)
2. *Eikon*: immortalising the mortals. (14/5)

[σκιαγραφία] *skiagraphia*

Lecture 7

Skiagraphia:

painting with shadows.

Reading:

- Plantzos 2016: pp. 180-185, 210-214.



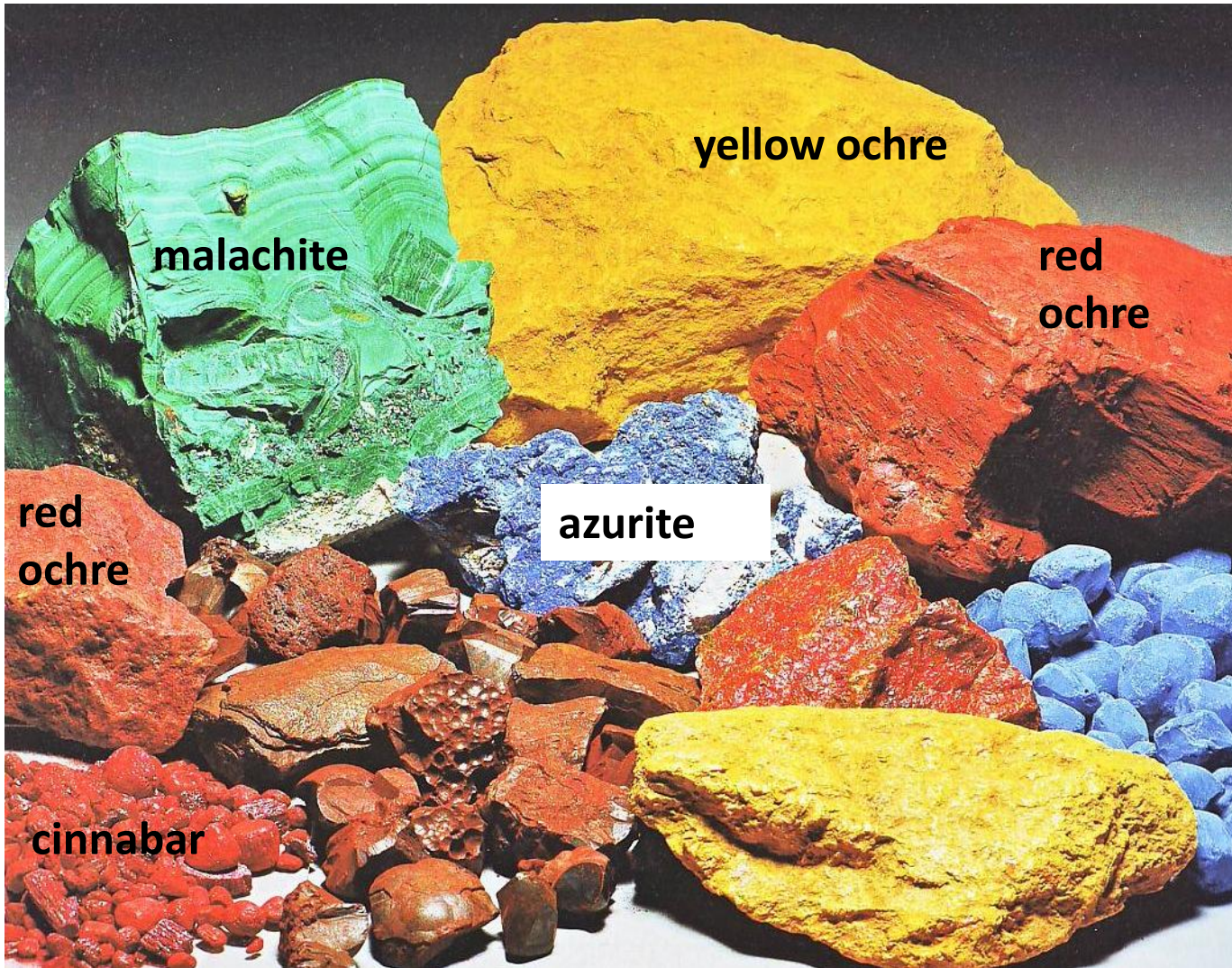
AVRATON DV PENELOS D'APOLLON



Victor Mottez, *Zeuxis choosing his models* (1858)







malachite

yellow ochre

red
ochre

red
ochre

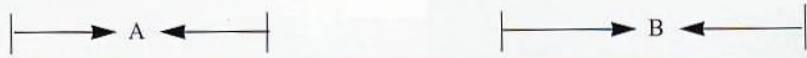
azurite

cinnabar

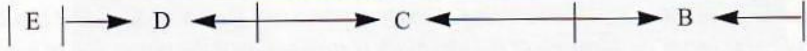
Egyptian
blue



1



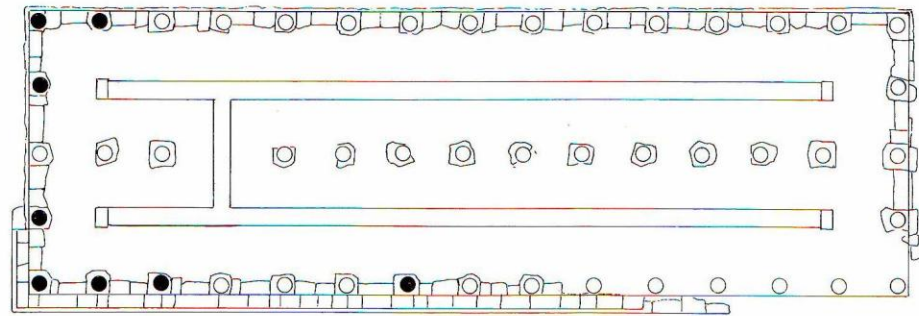
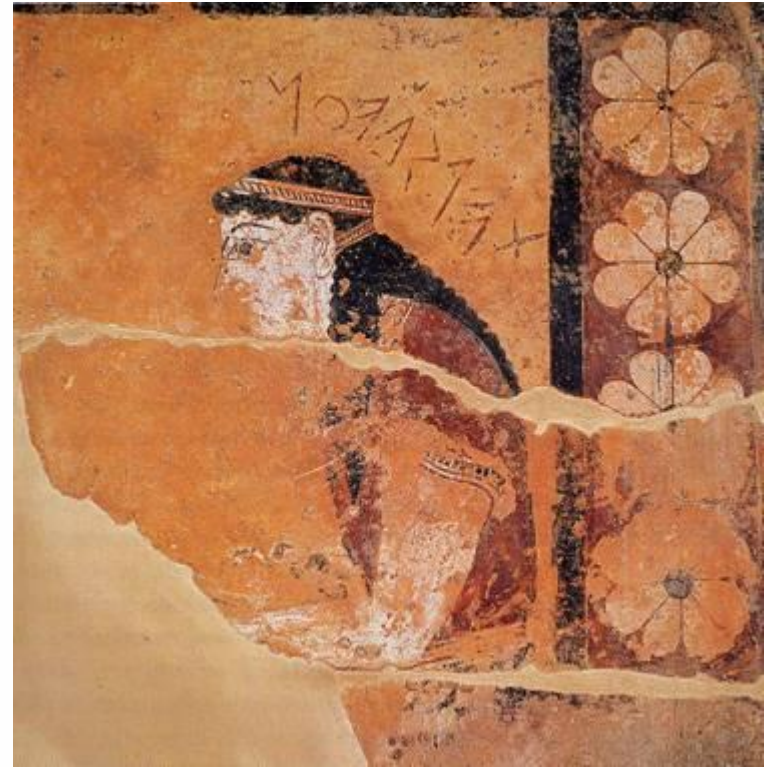
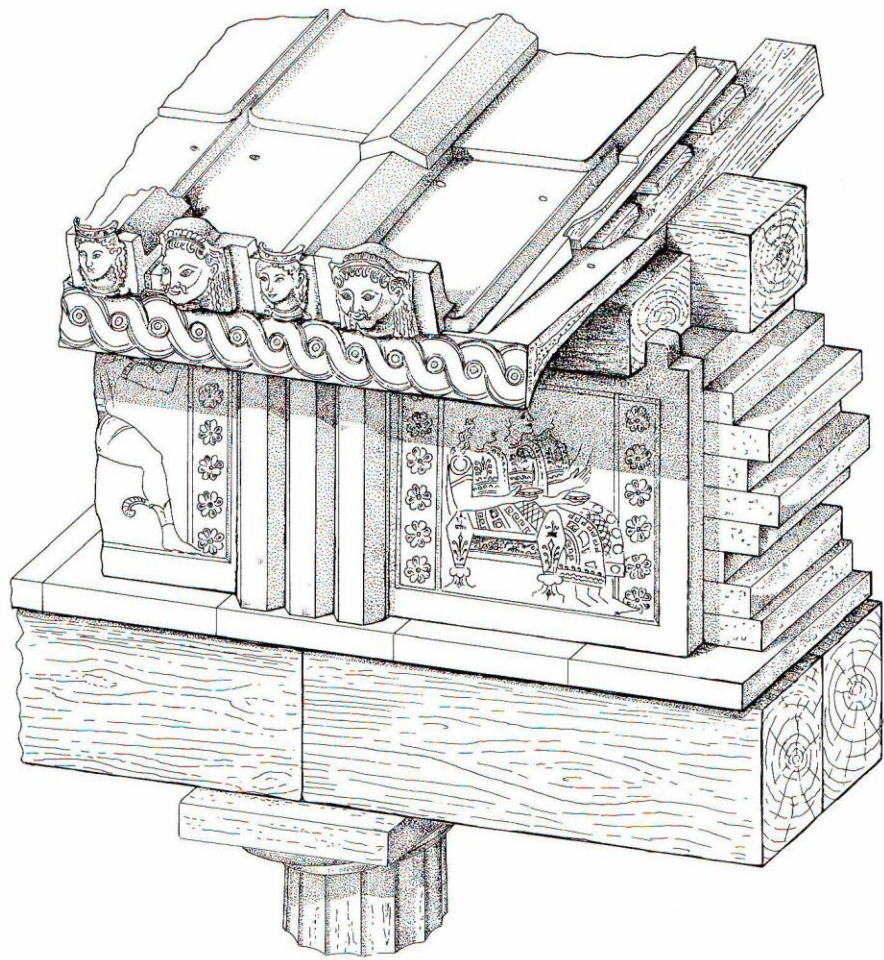
2







Eduard Daega,
The Invention of Painting
(1832)



**Thermon (Aetolia),
Painted clay metopes.
Late 7th c. BCE**

**Thermon (Aetolia),
Painted clay metopes.
Late 7th c. BCE**





**Thermon (Aetolia),
Painted clay metopes.
Late 7th c. BCE**

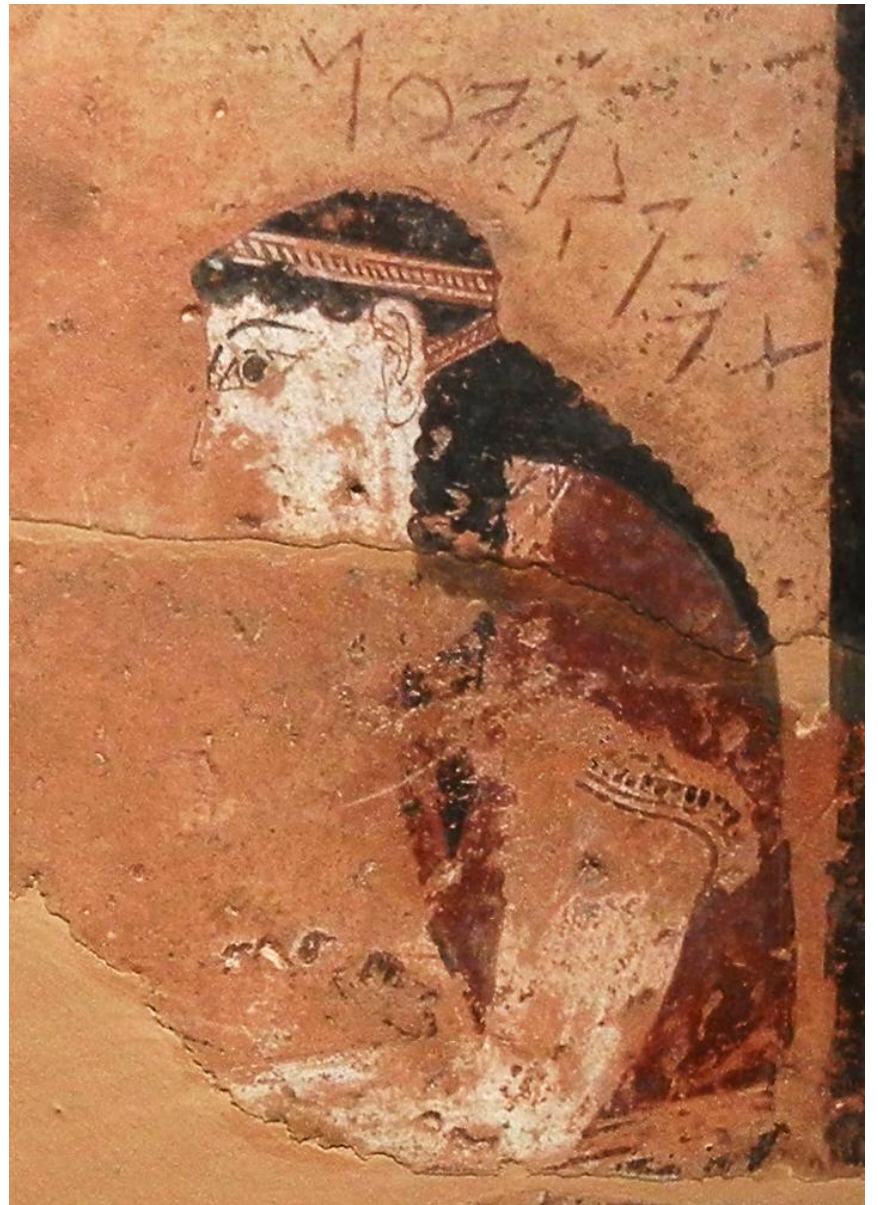
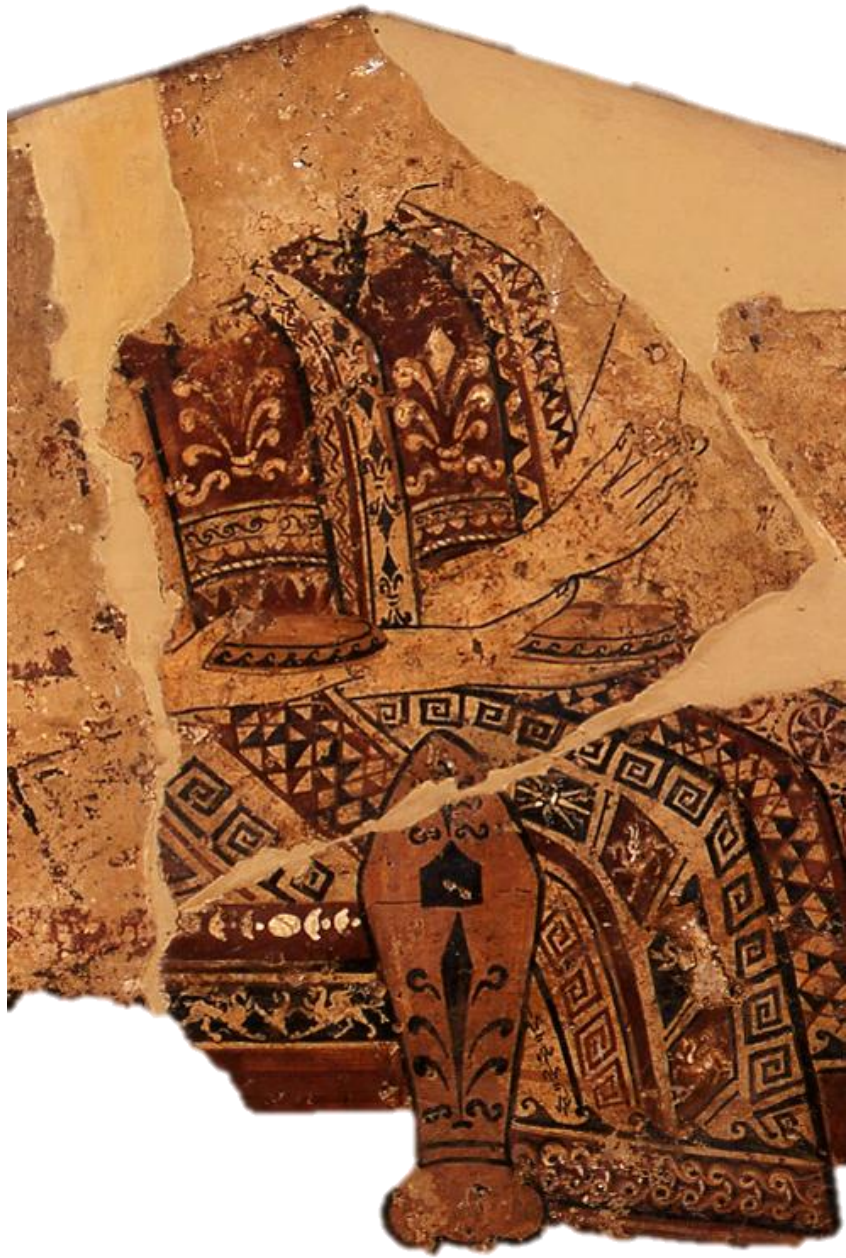




**Thermon (Aetolia),
Painted clay metopes.
Late 7th c. BCE**

**Thermon (Aetolia),
Painted clay metopes.
Late 7th c. BCE**

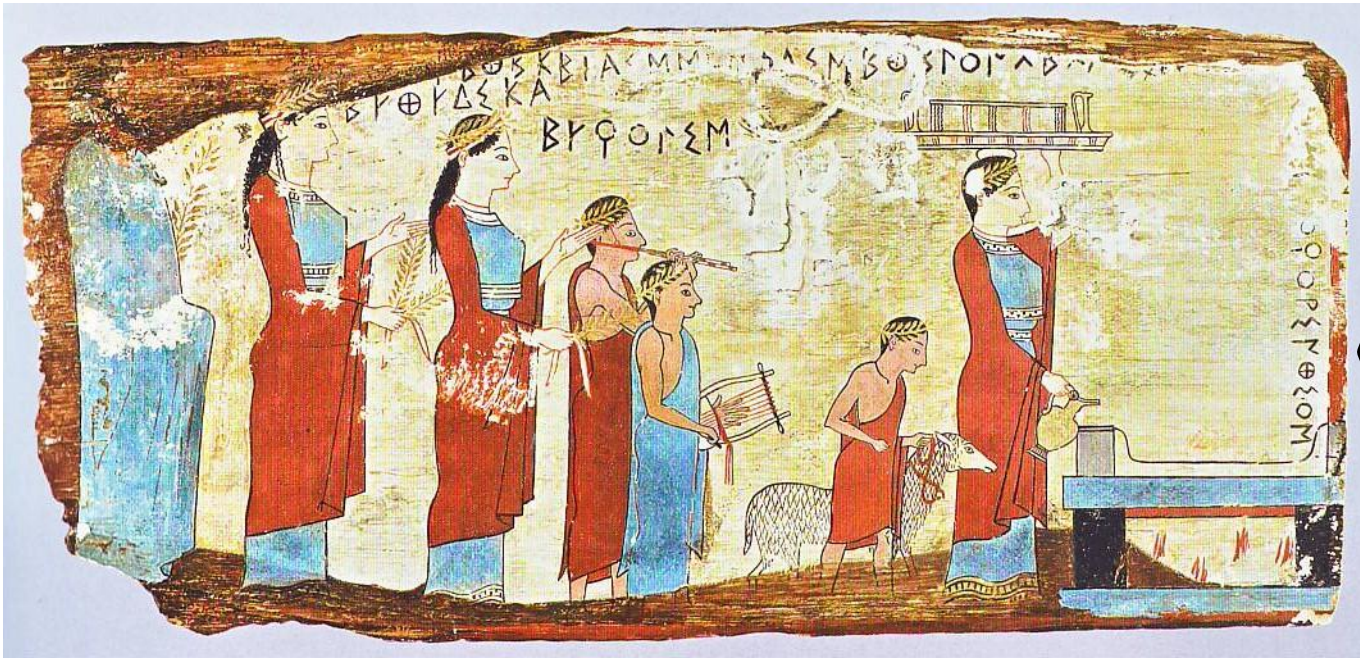




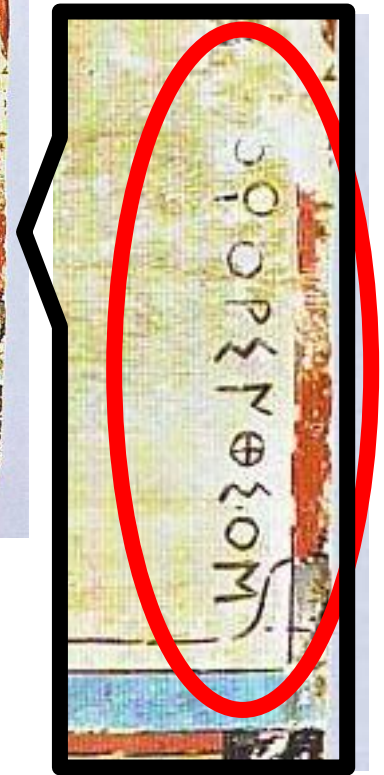


Corinthian krater.
6th c. BCE.





Painted wooden panel.
6th c. BCE.





Painted wooden panel.
6th c. BCE.



Fe(R)-As(G)-Cu(B)



Scanning macro X-ray Fluorescence (MAXRF)

Mapping of the chemical elements distribution with sub-millimetre spatial resolution



Fig. 6 b,c. Procession in honour of the Nymphs, painting on wood panel (L. 32.3 cm, w. 15 cm), from Pitsa Cave, second half of the 6th c. B.C., National Archaeological Museum, Athens, inv. 16464. b. MA-XRF elemental maps of Iron (Fe), Arsenic (As) and Copper (Cu). © F. P. Romano; c. Infrared-reflected image. © G. Verri.





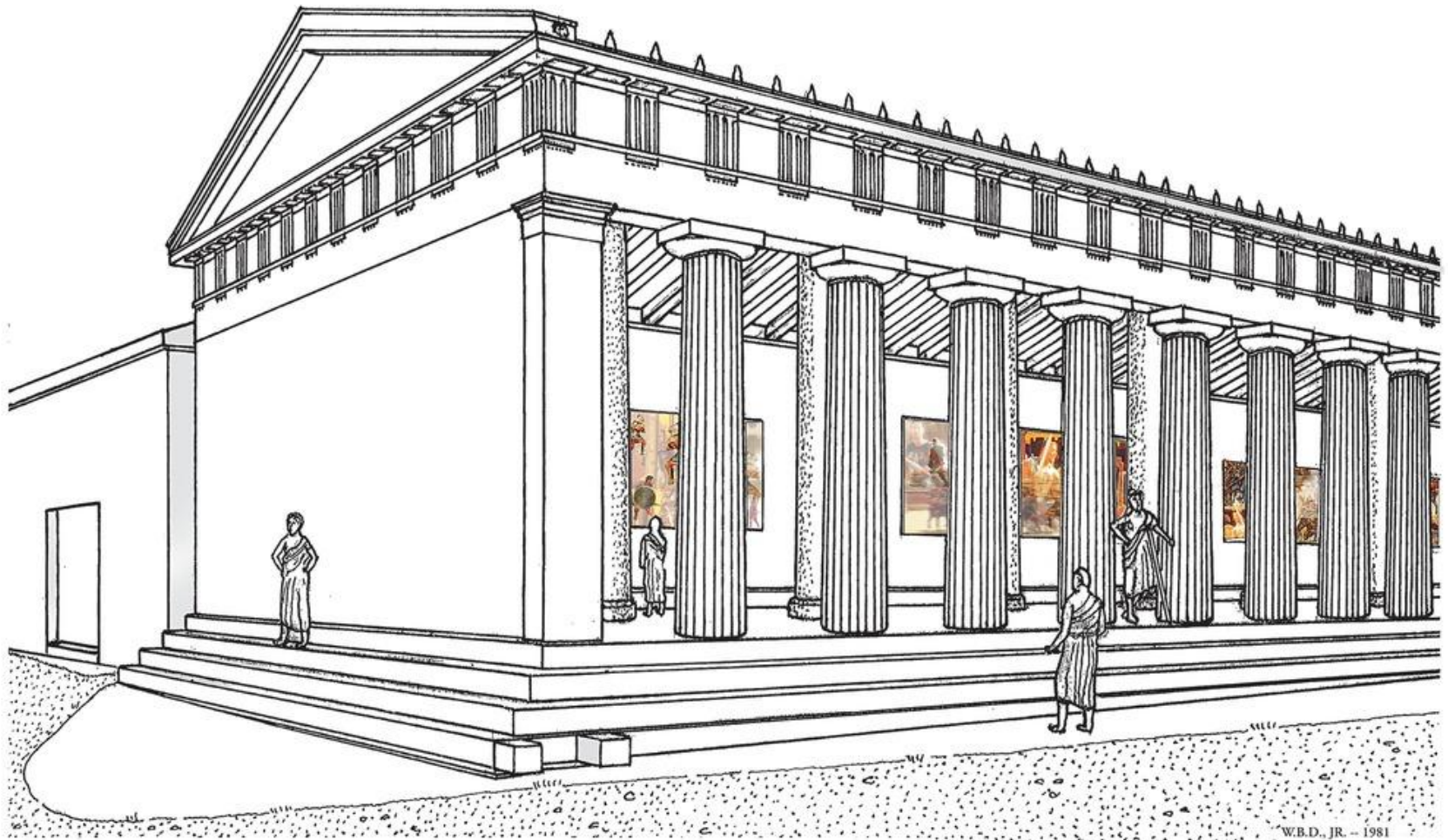




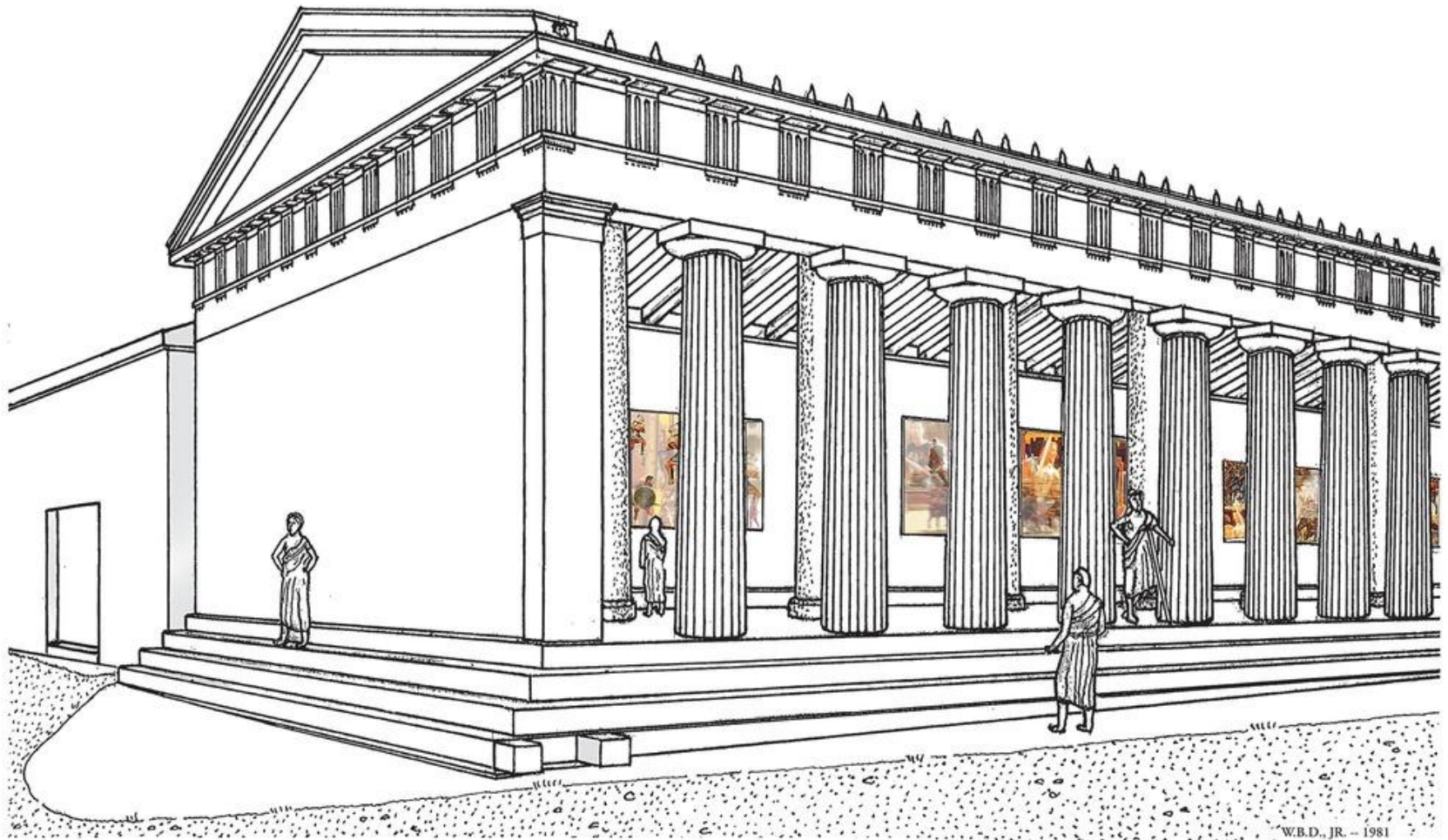




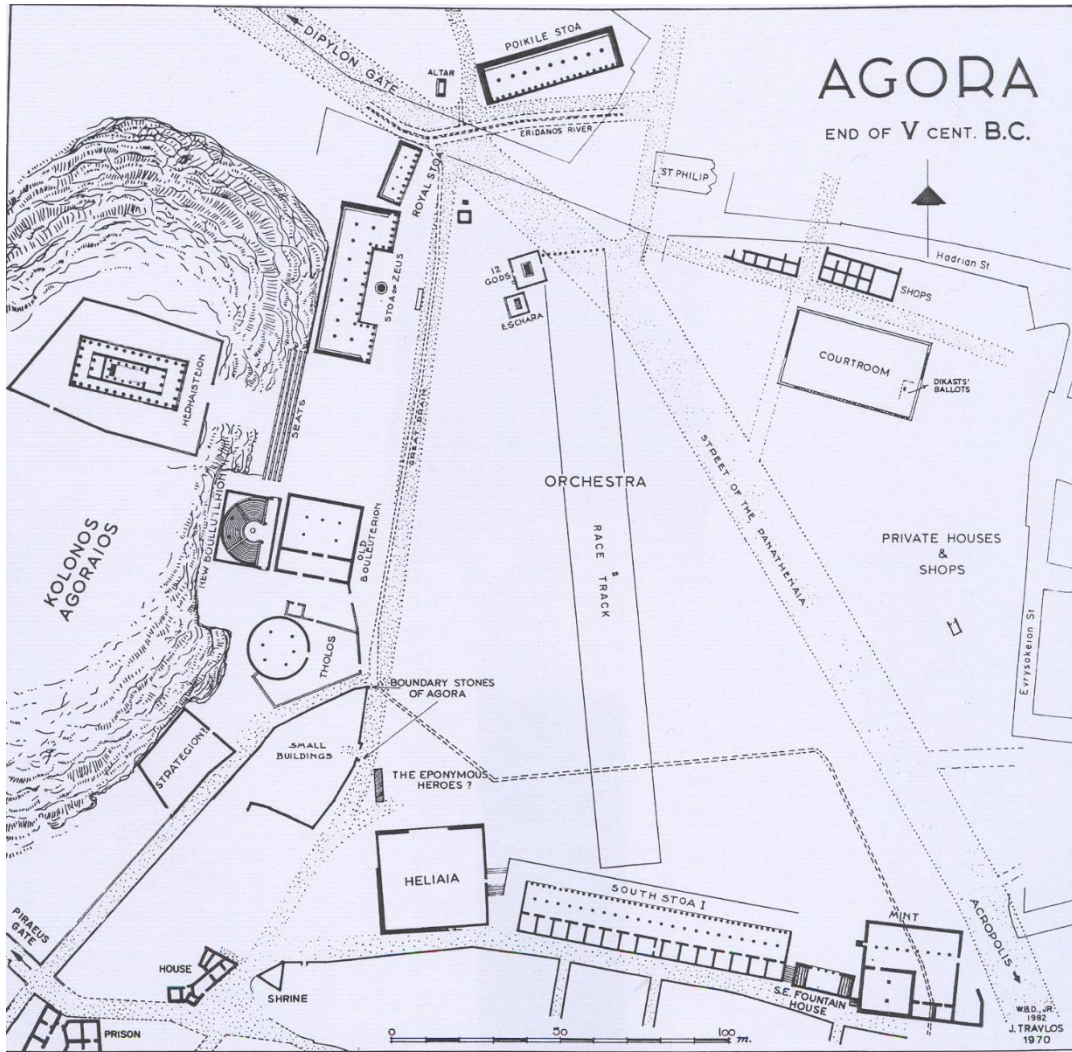
Panainos (mid-5th c. BCE):



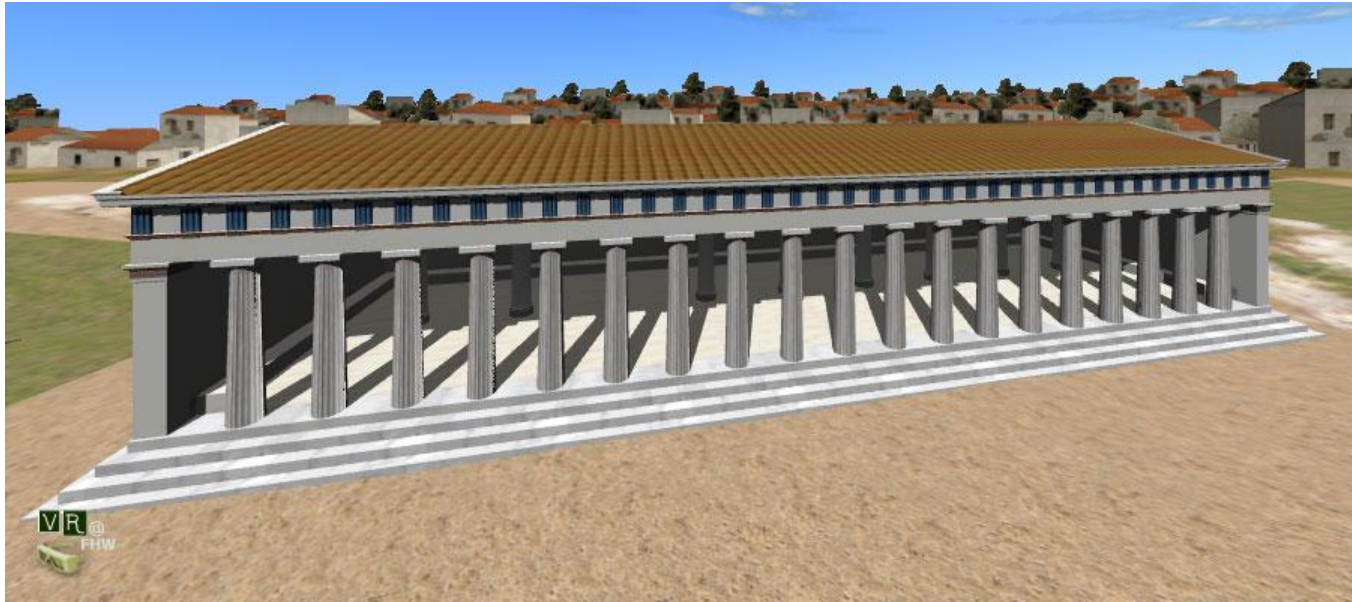
Polygnotos from Thasos:



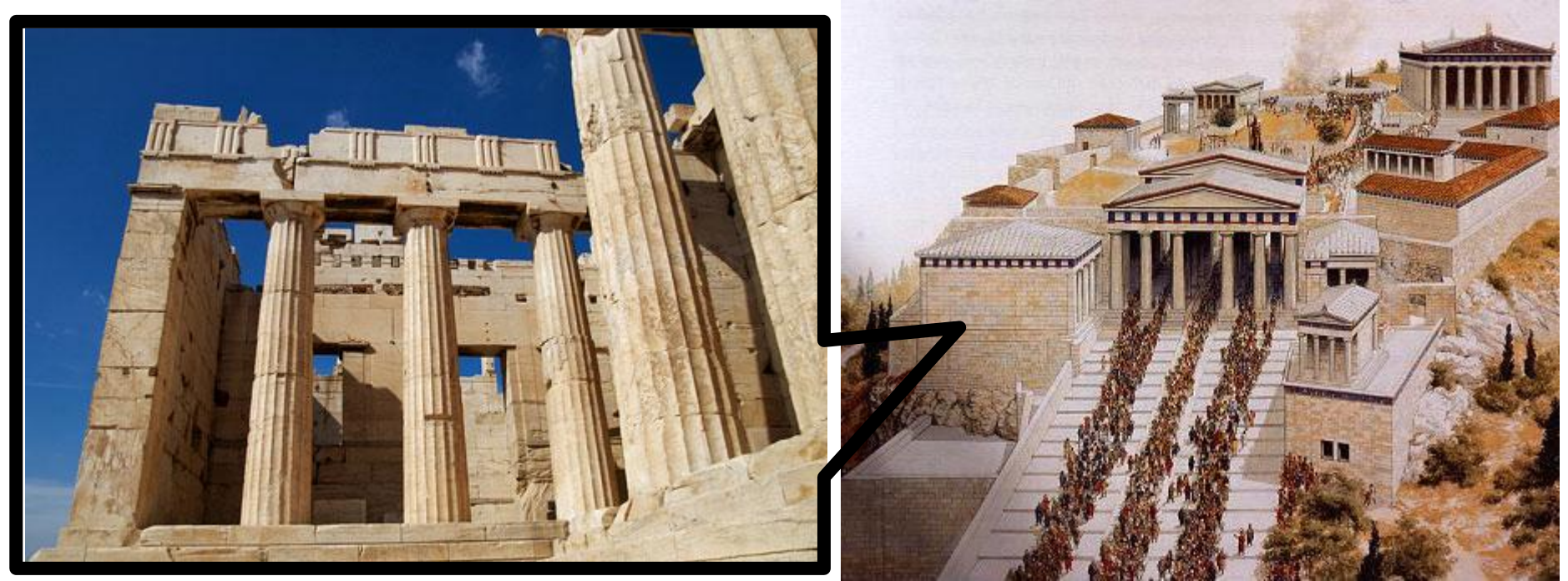


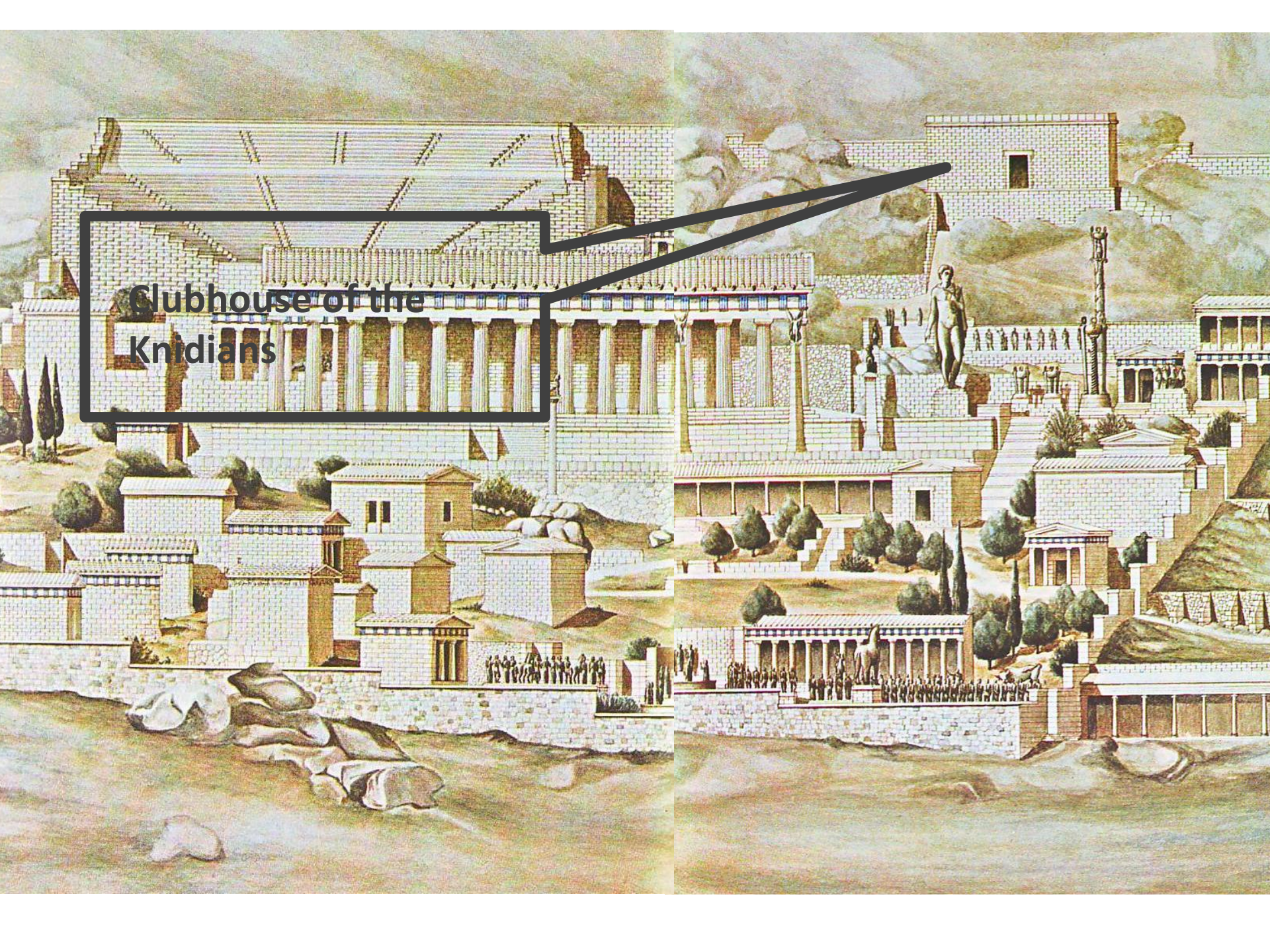




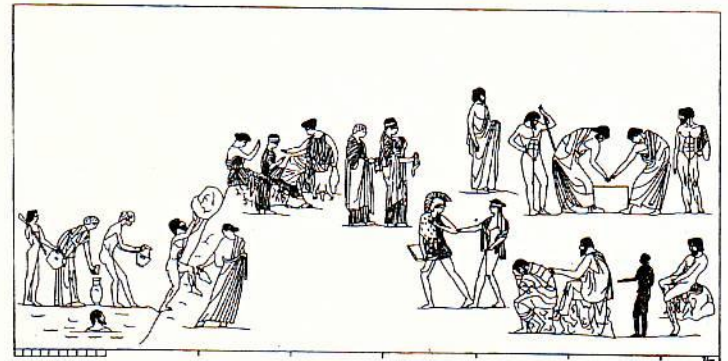
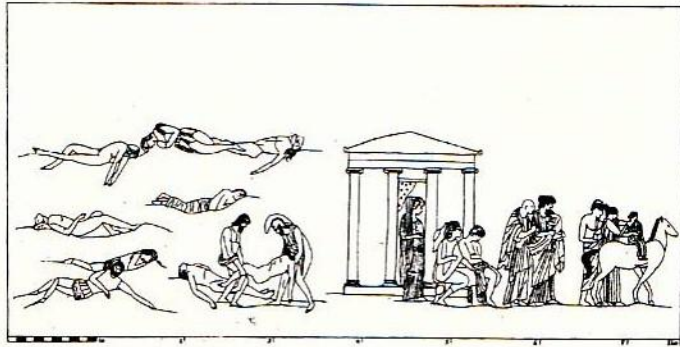
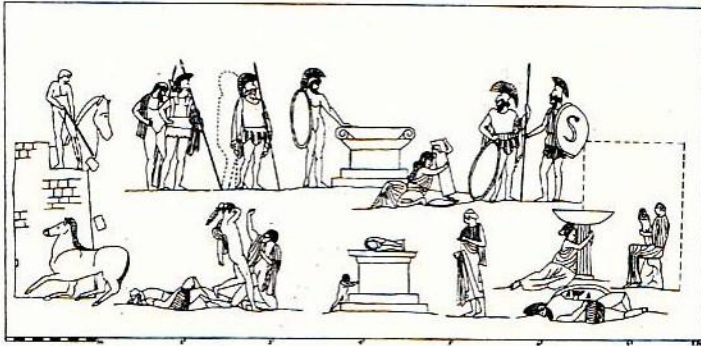


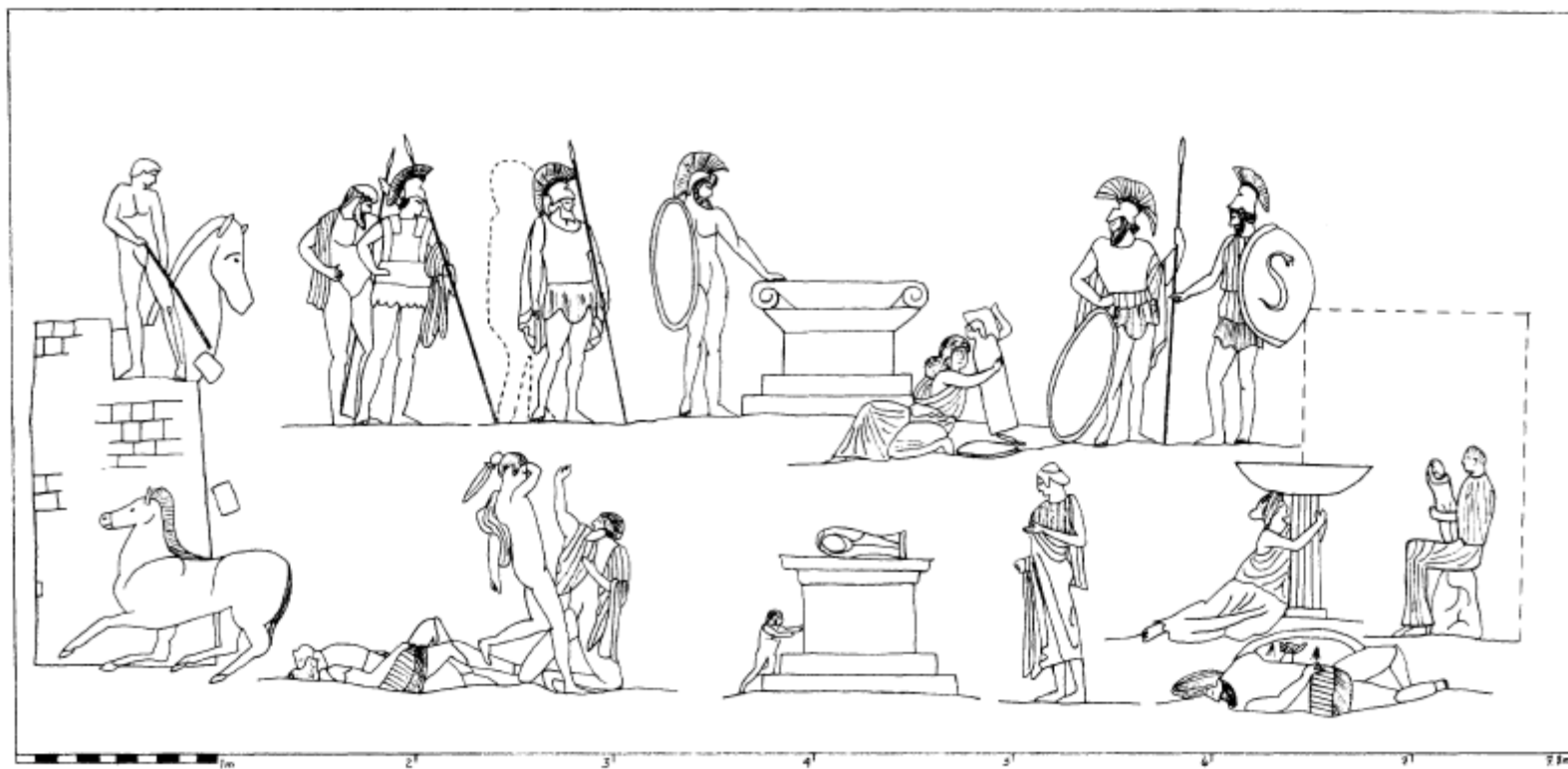
Polygnotos from Thasos:





**Clubhouse of the
Knidians**







**Red-figure krater.
5th c. BCE**



**White-ground krater.
5th c. BCE**



The Tomb of the Diver.
Early 5th c. BCE.

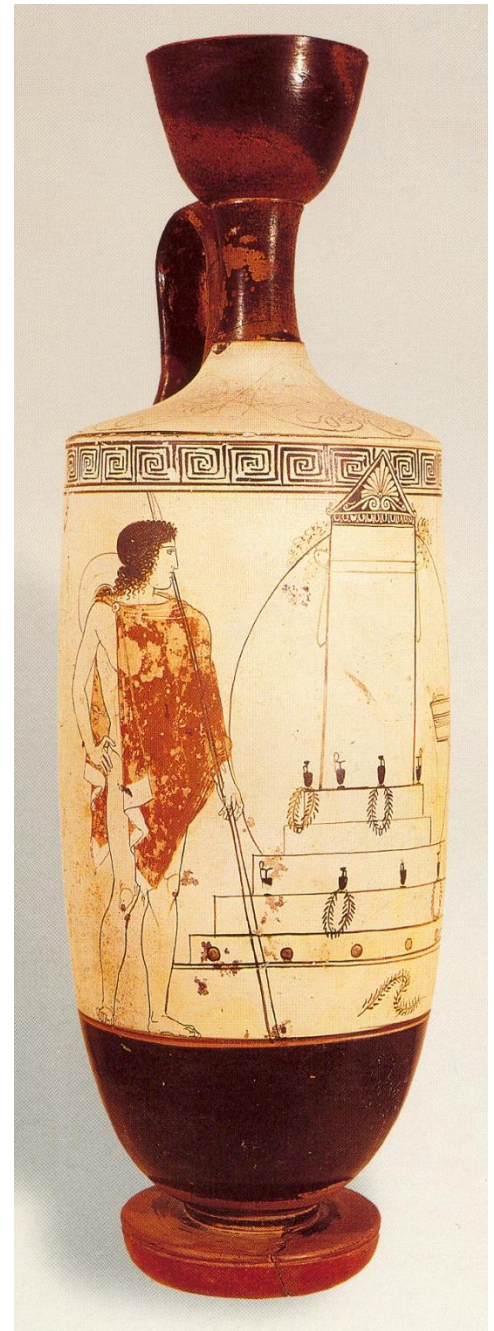
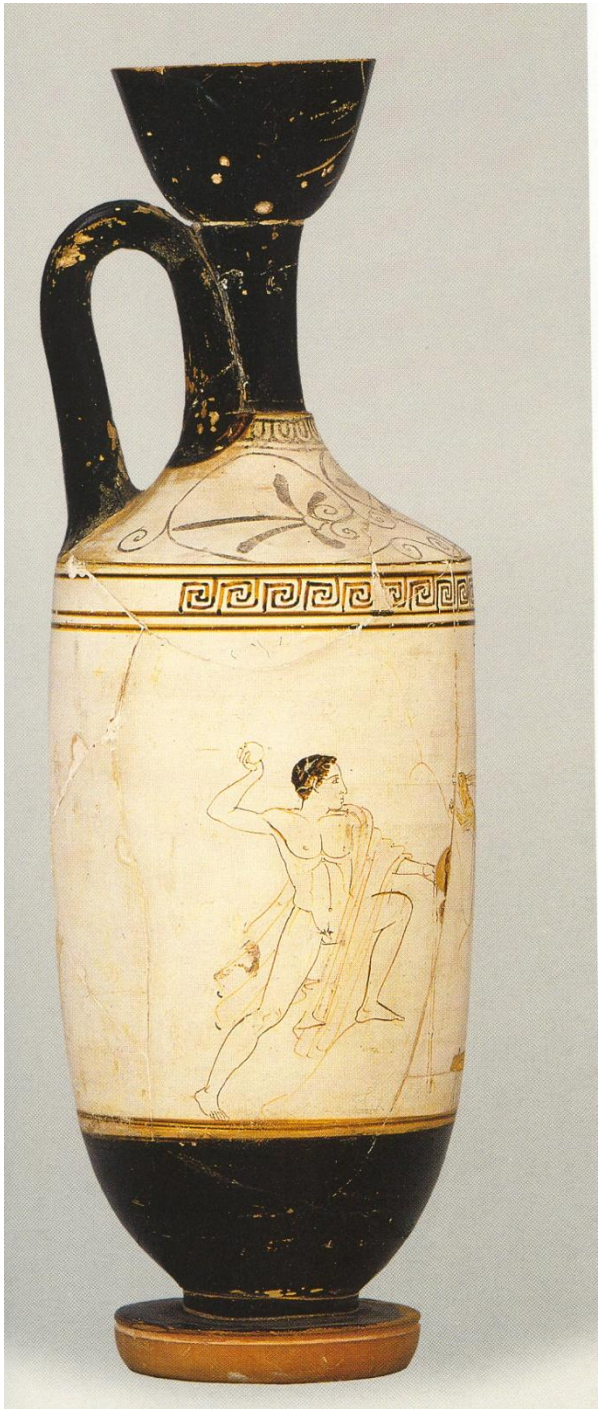


**White-ground krater.
5th c. BCE**





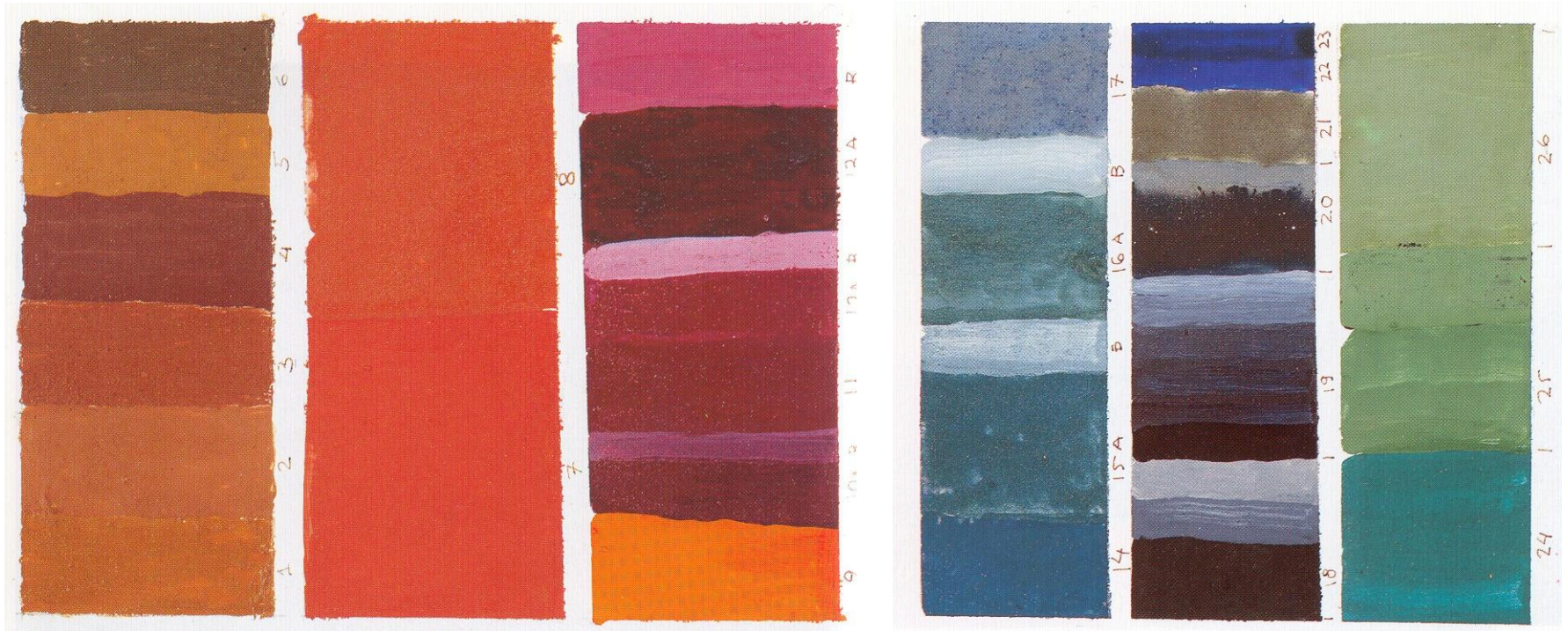
White-ground kylix. c. 470 BCE.



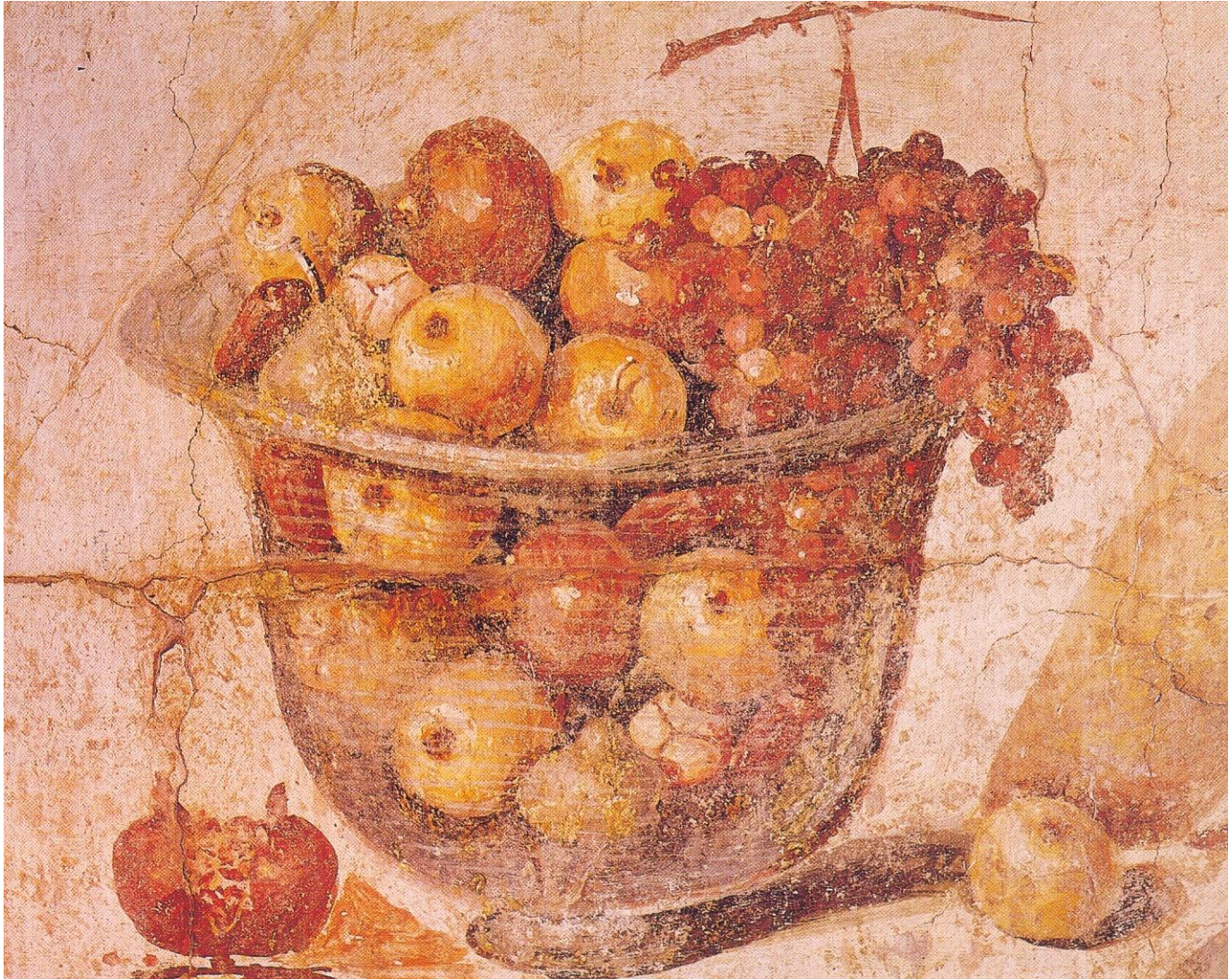


White-ground lekythos. c. 400 BCE.

Apollodoros *skiagraphos*







Skenographia:



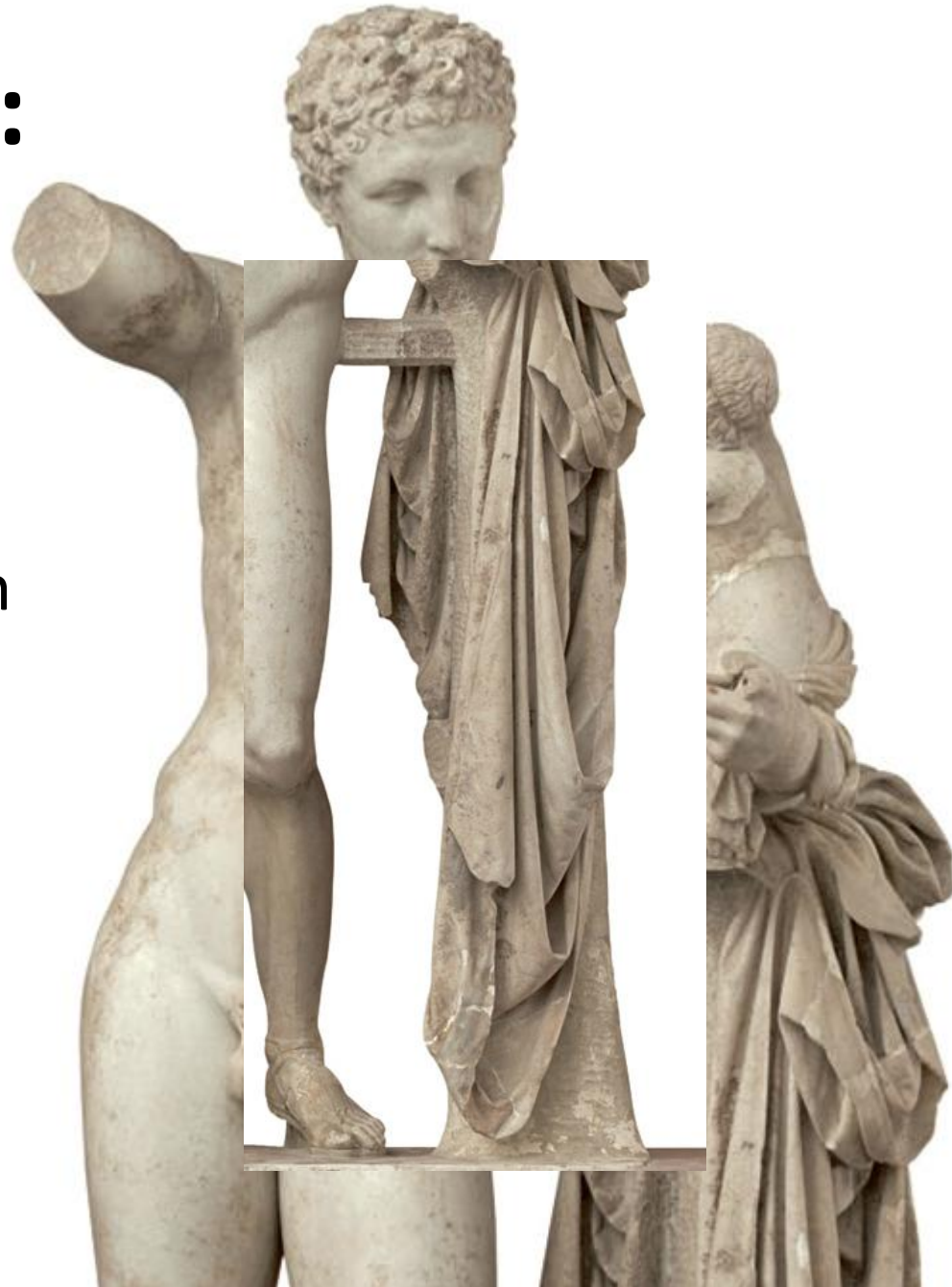


Pamphilos (4th c. BCE):

- From Sikyon or Amphipolis
- The first artist who to study arithmetic and geometry in order to perfect his art
- Charged high tuition fees
- *On Draughtsmanship*
- *On Painting and Illustrious Painters*

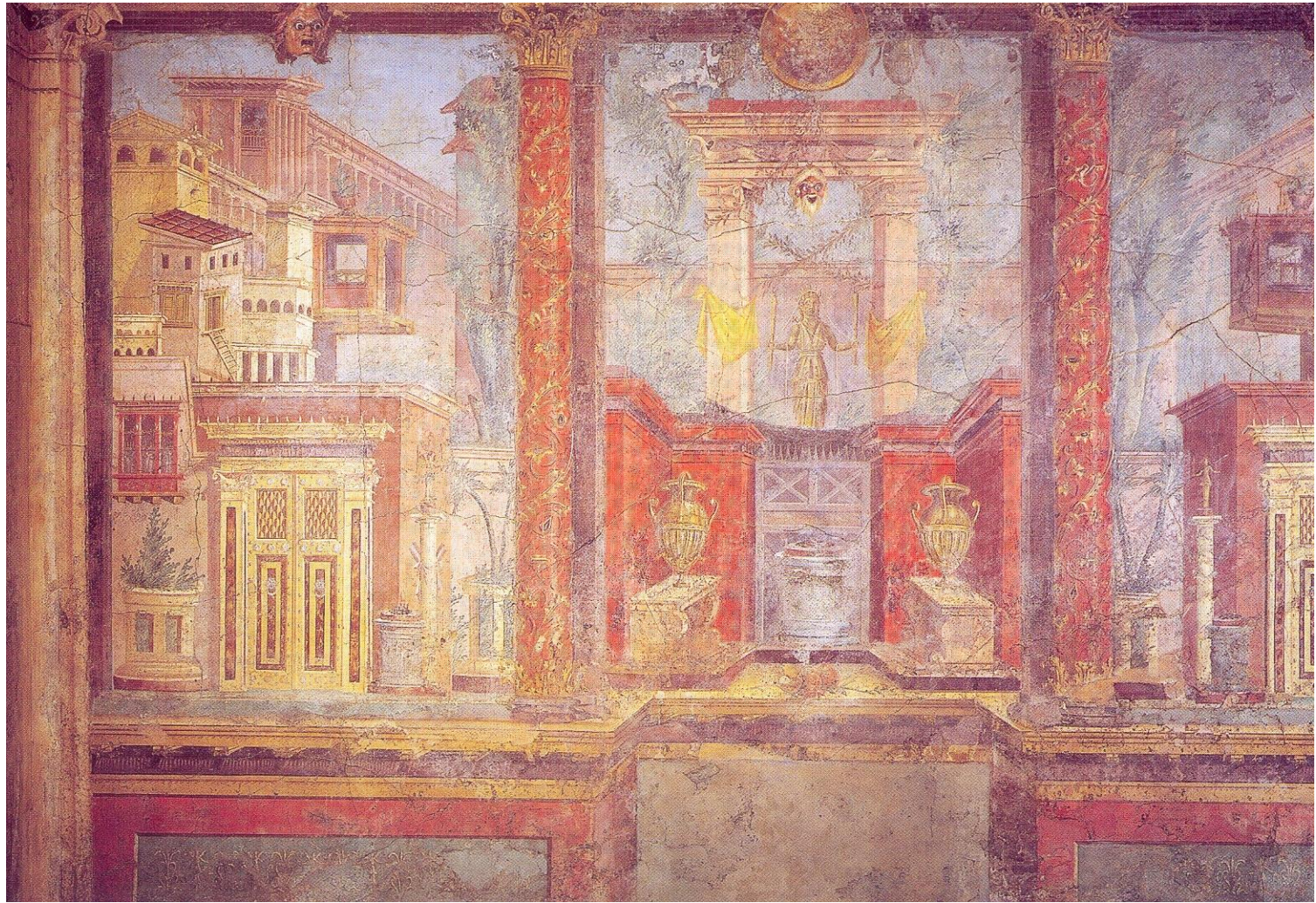
Nikias (4th c. BC):

- Pupil of the painter Antidotos
- First to use the technique of shading on the female body
- Collaboration with Praxiteles
- Hermes of Olympia (?)



Nikomachos (late 4th c. BCE):

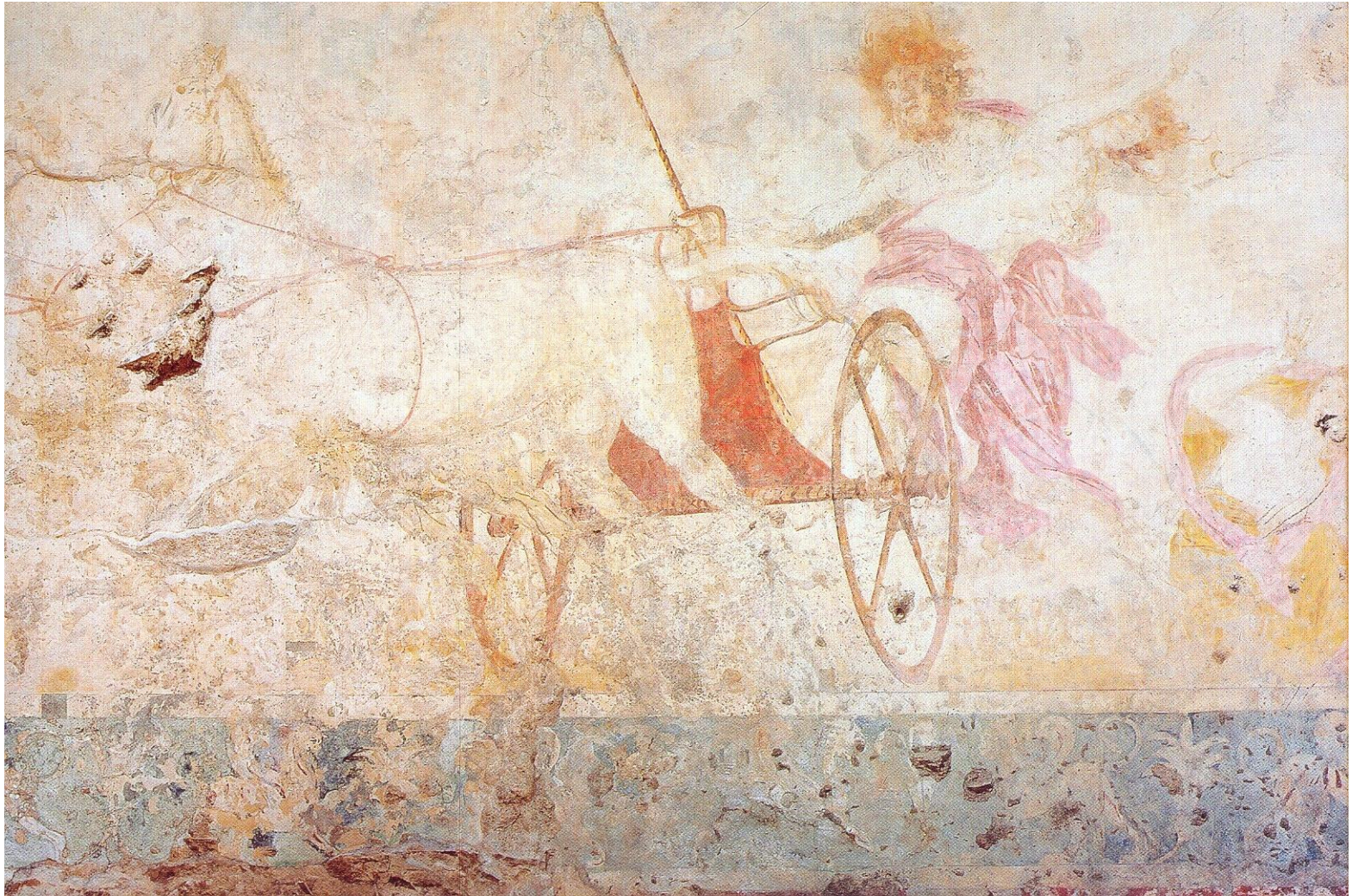
- Thebes
- son and father of painters
- *Rape of Persephone*



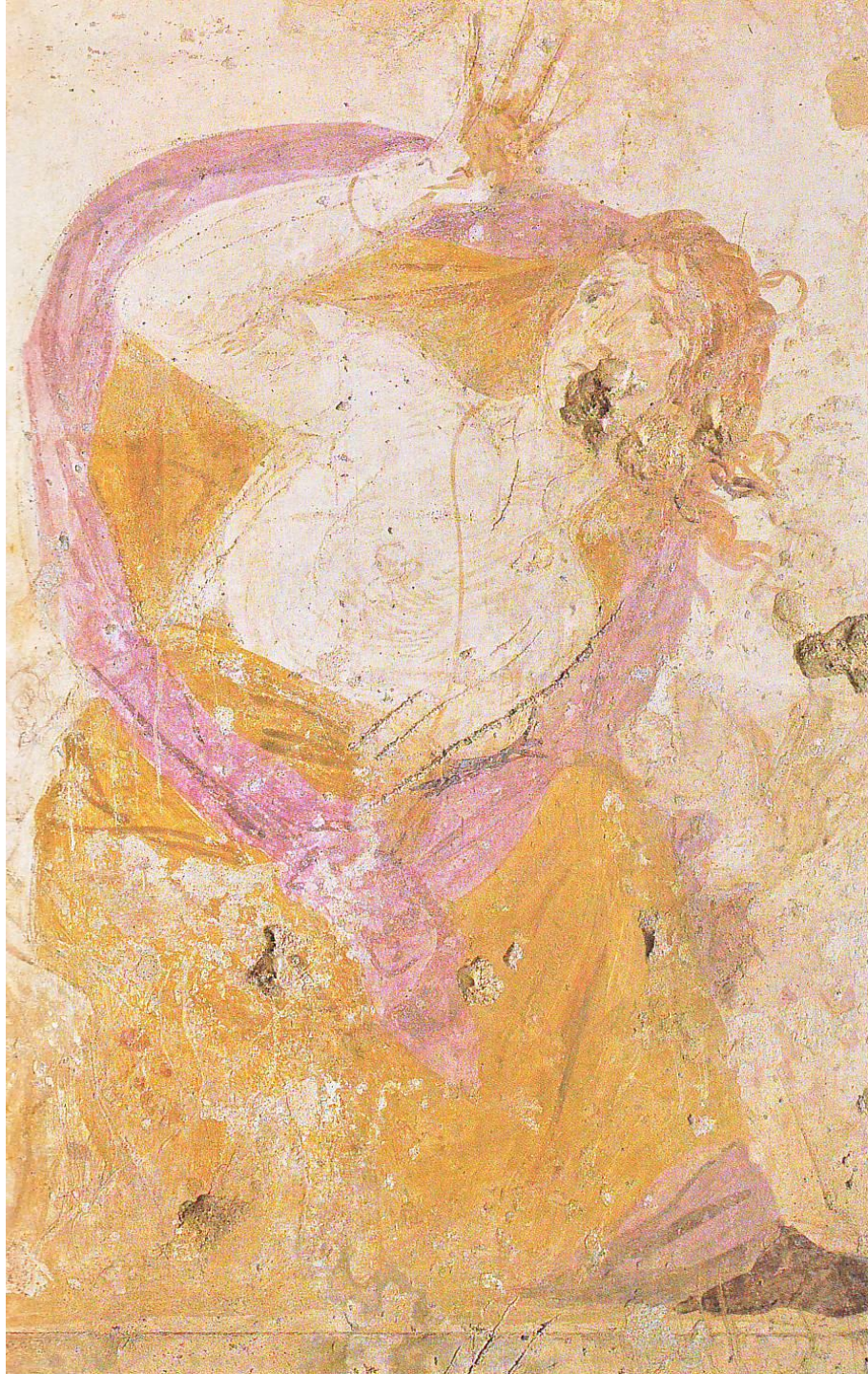




The Persephone Tomb. c. 350 BCE.



The Persephone Tomb. c. 350 BCE.









Macedonian tombs:

- Invented in Macedonia
- Appeared in the 4th century BCE and remained in use until the late Hellenistic period
- Subterranean monuments, built from local limestone, lining the roads outside the walls of the city
- Square or rectangular plan and barrel-vaulted roof
- Single or double-chambered
- *Dromos*
- Family tombs
- Monumental façades



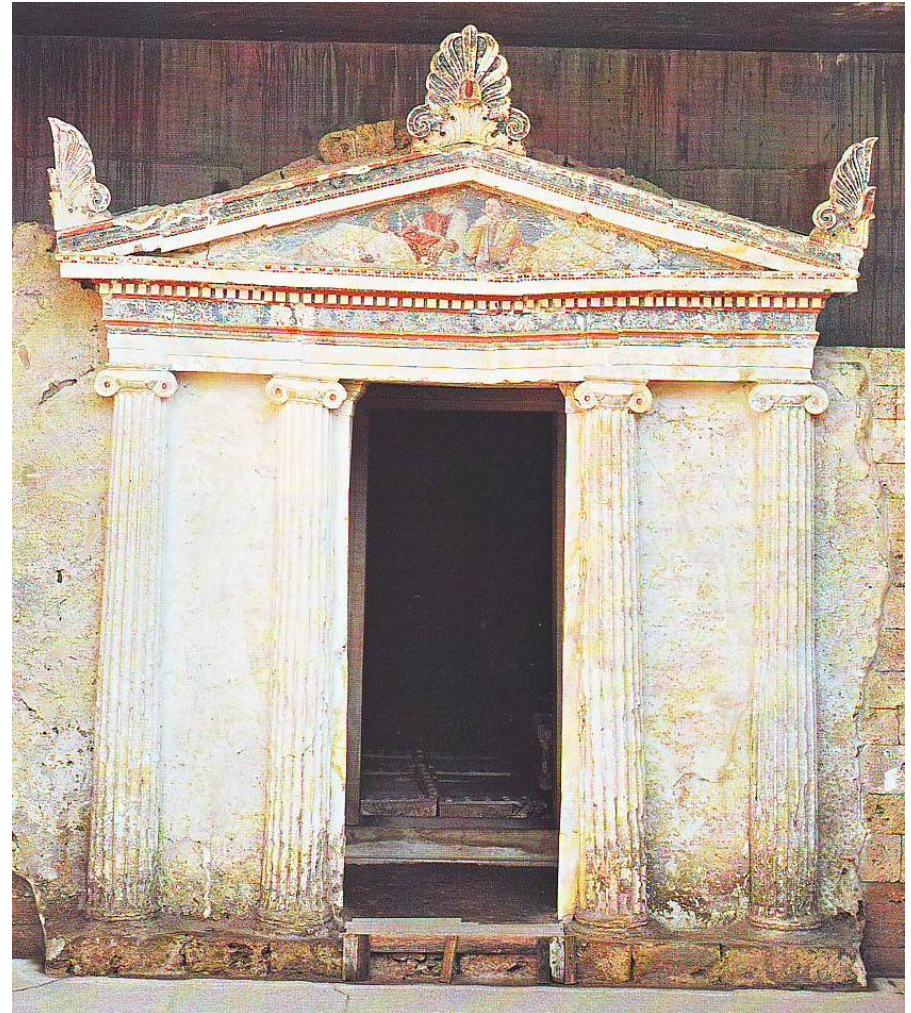
Macedonian tombs:

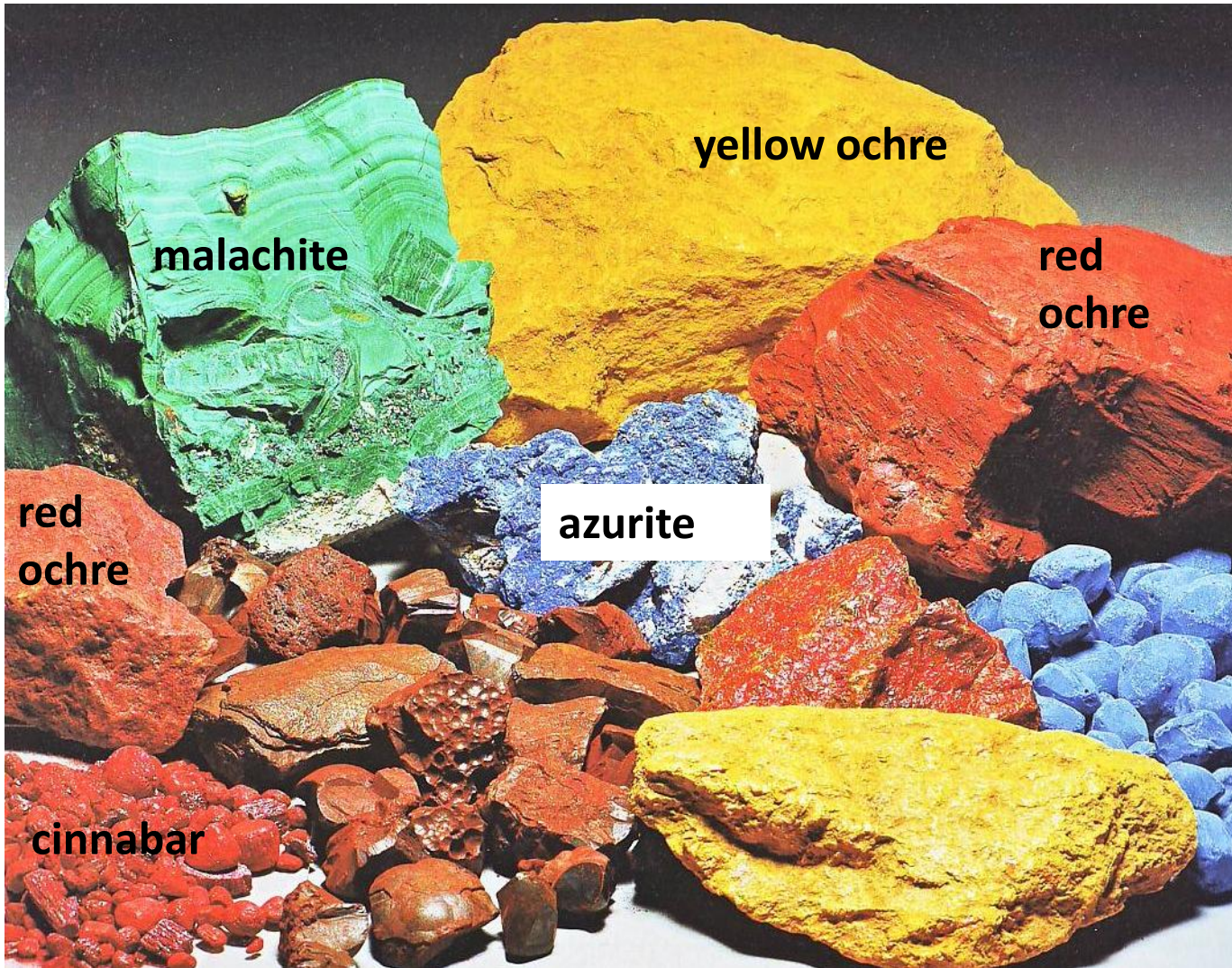
- Invented in Macedonia
- Appeared in the 4th century BCE and remained in use until the late Hellenistic period
- Subterranean monuments, built from local limestone, lining the roads outside the walls of the city
- Square or rectangular plan and barrel-vaulted roof
- Single or double-chambered
- *Dromos*
- Family tombs
- Monumental façades



Macedonian tombs:

- Invented in Macedonia
- Appeared in the 4th century BCE and remained in use until the late Hellenistic period
- Subterranean monuments, built from local limestone, lining the roads outside the walls of the city
- Square or rectangular plan and barrel-vaulted roof
- Single or double-chambered
- *Dromos*
- Family tombs
- Monumental façades





malachite

yellow ochre

red
ochre

red
ochre

azurite

cinnabar

Egyptian
blue





Tomb of "Philip II". c. 330-310 BCE.



Tomb of “Philip II”. c. 330-310 BCE.







