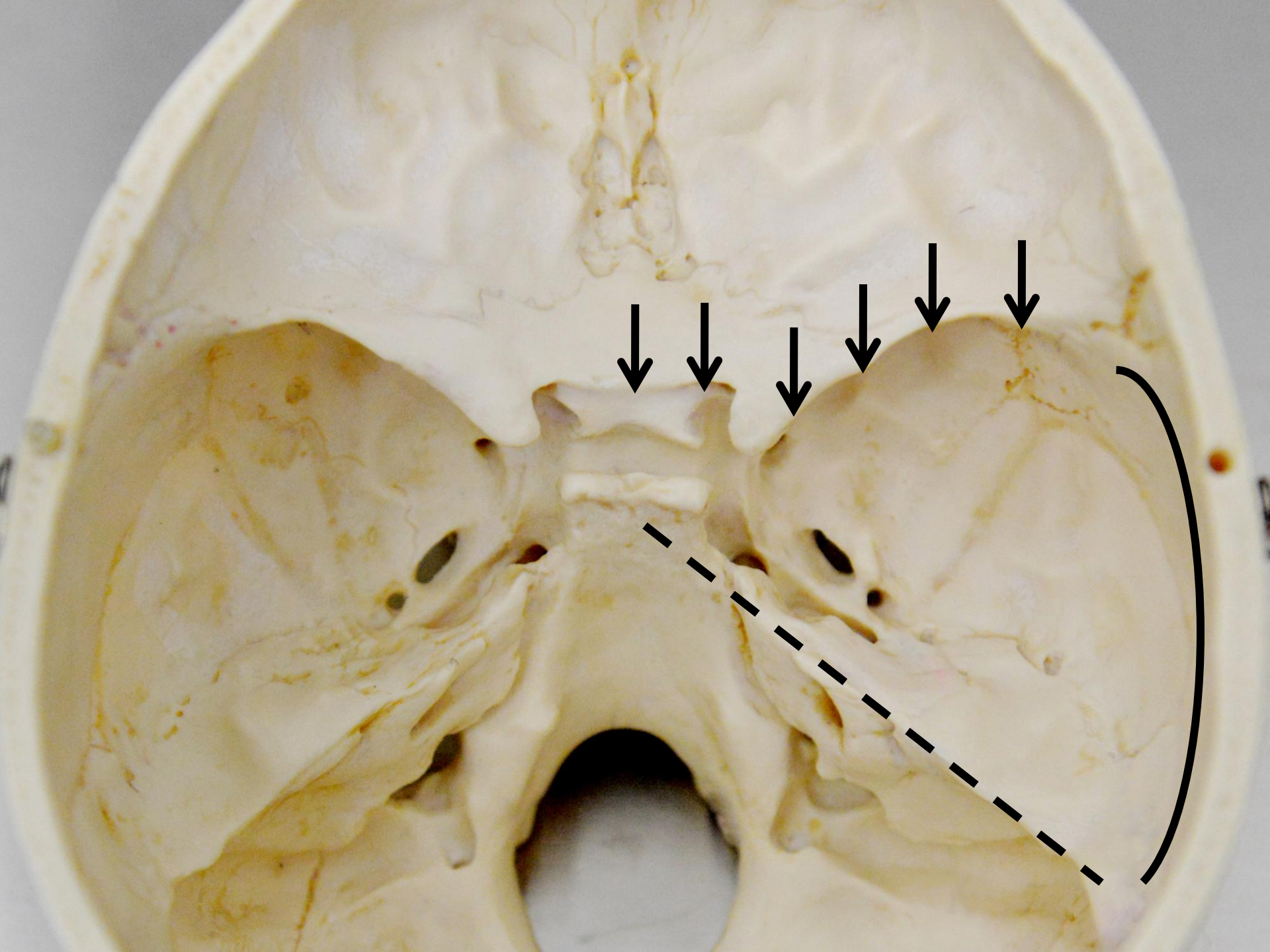
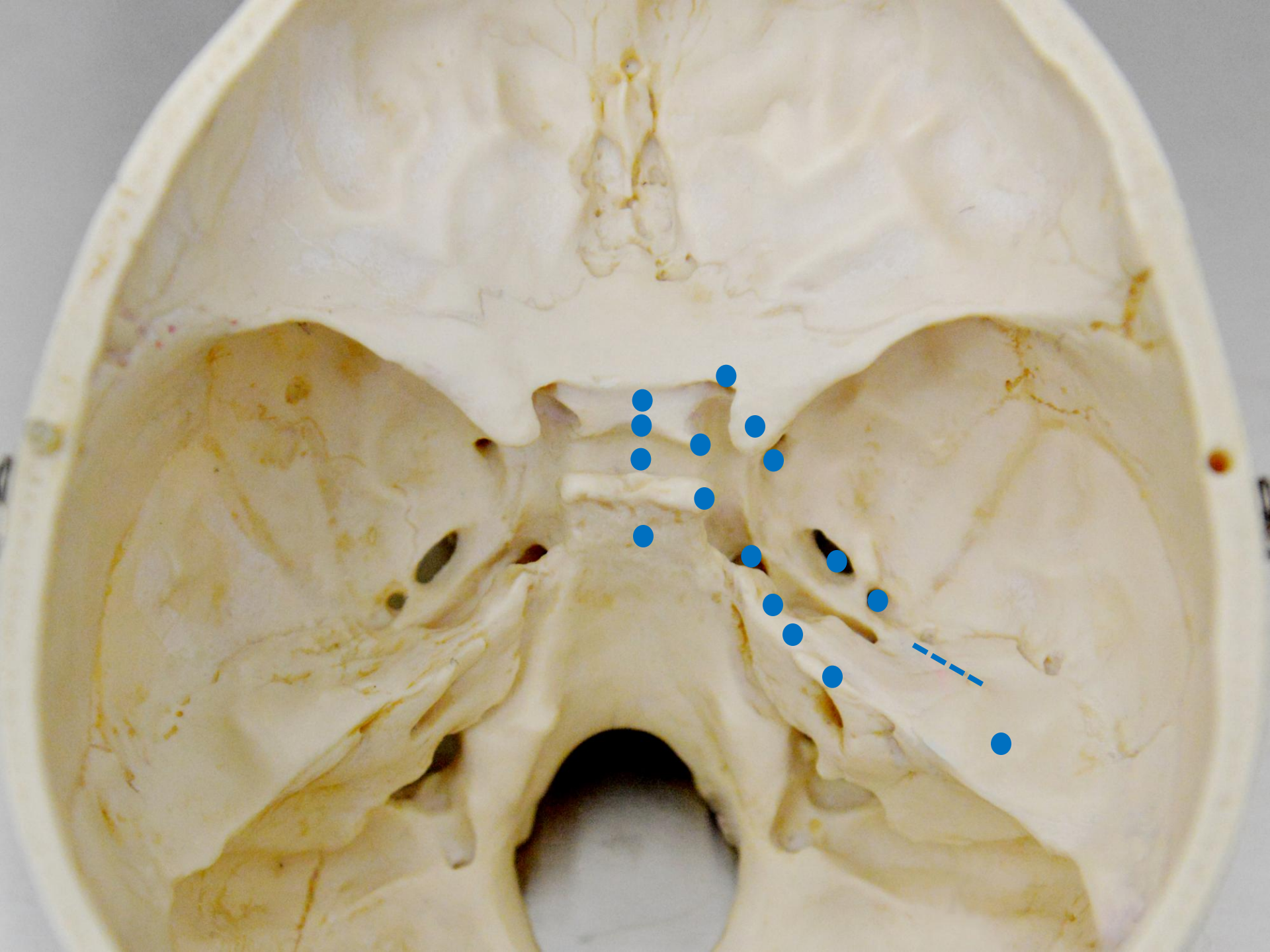
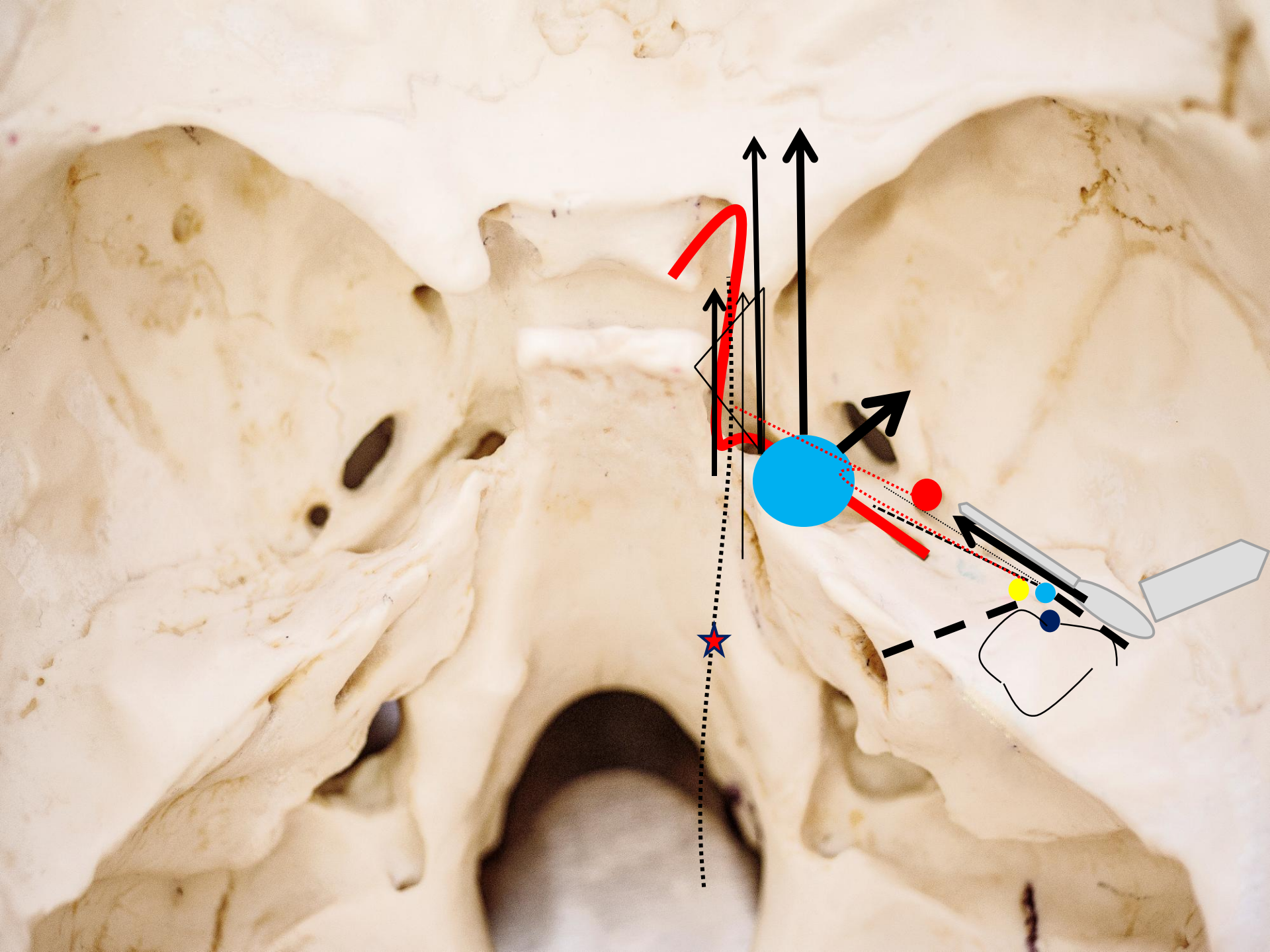


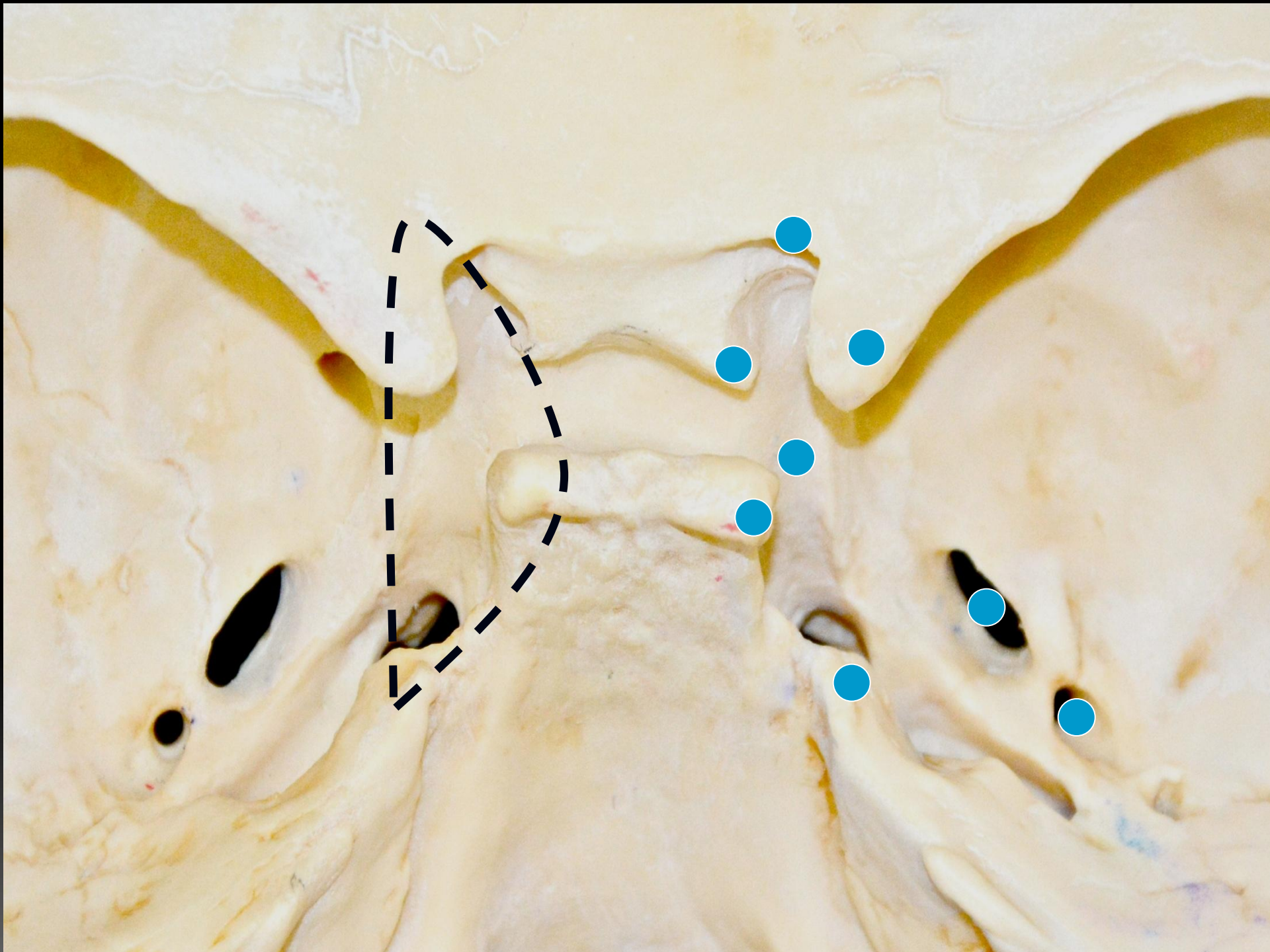
*I profess both to learn and to teach anatomy,
not from books but from dissections , not from
the position of philosophers but from the fabric
of nature.*

William Harvey(1578-1657)







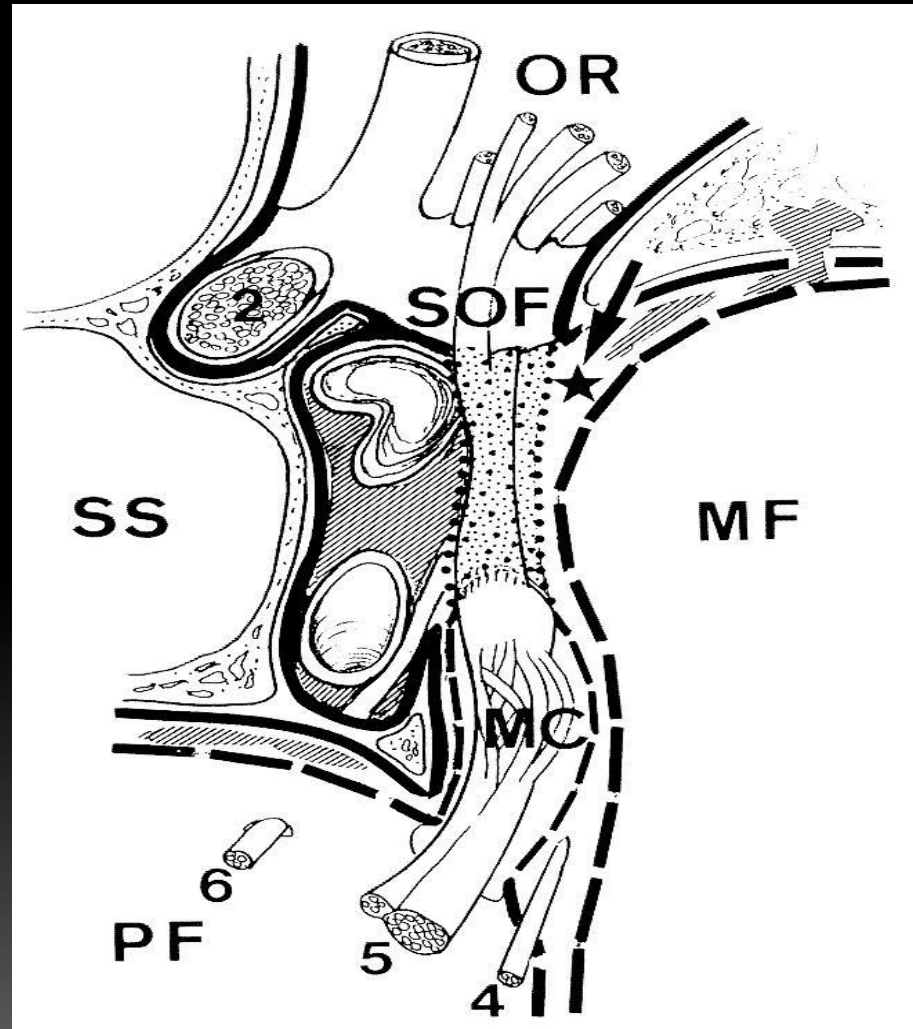


Meningeal architecture of Cavernous Sinus

Meningeal architecture of Cavernous Sinus. Clinical and surgical implication

Kawase Takeshi M

Neurosurgery September 1996 Volume 39 Issue 3



Τοιχώματα

4 τοιχώματα

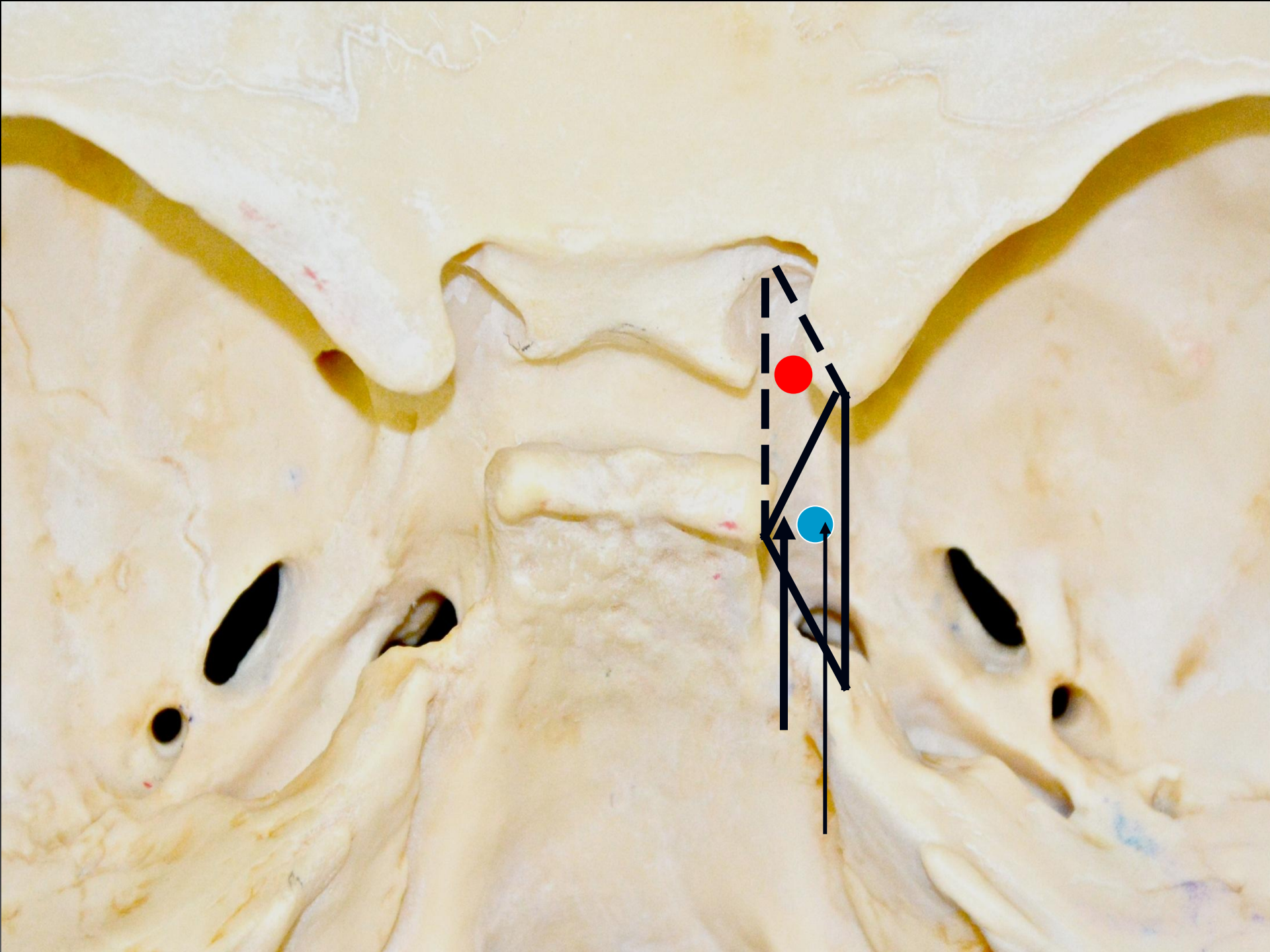
άνω (οροφή)

Πλάγιο

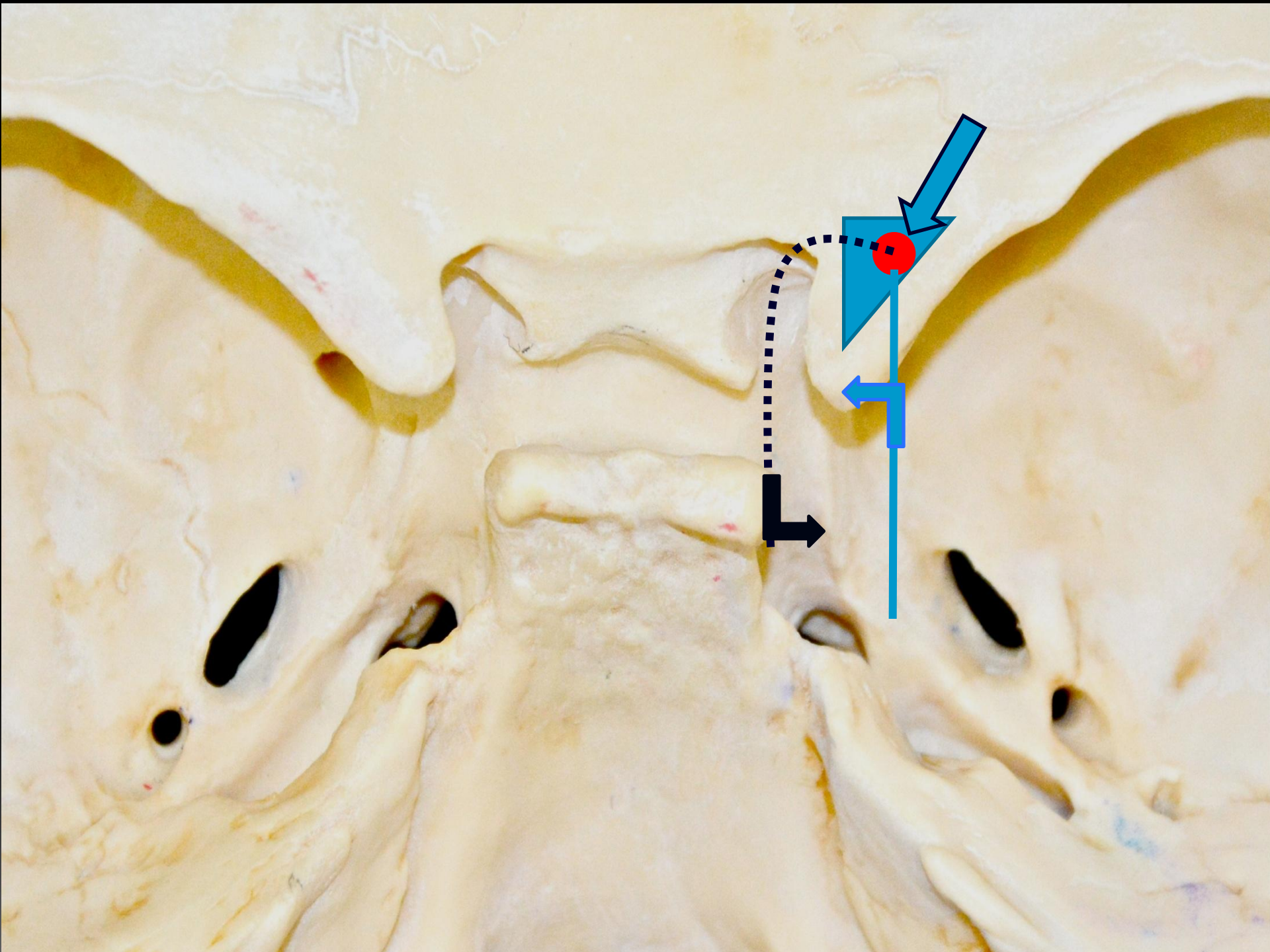
Έσω

Οπίσθιο

Άνω τοίχωμα



Πλάγιο-έσω τοίχωμα



Περιεχόμενα

- Έσω καρωτίδα
- Κοινό κινητικό νεύρο
- Συμπαθητικές ίνες
- Τροχιλιακό νεύρο
- Φλεβικός χώρος
- Απαγωγό νεύρο
- Τρίδυμο νεύρο

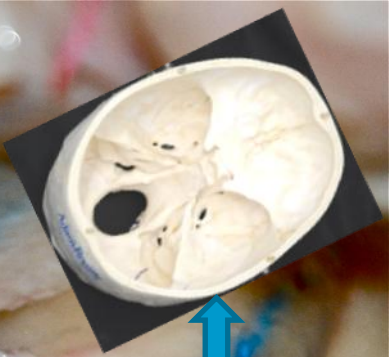
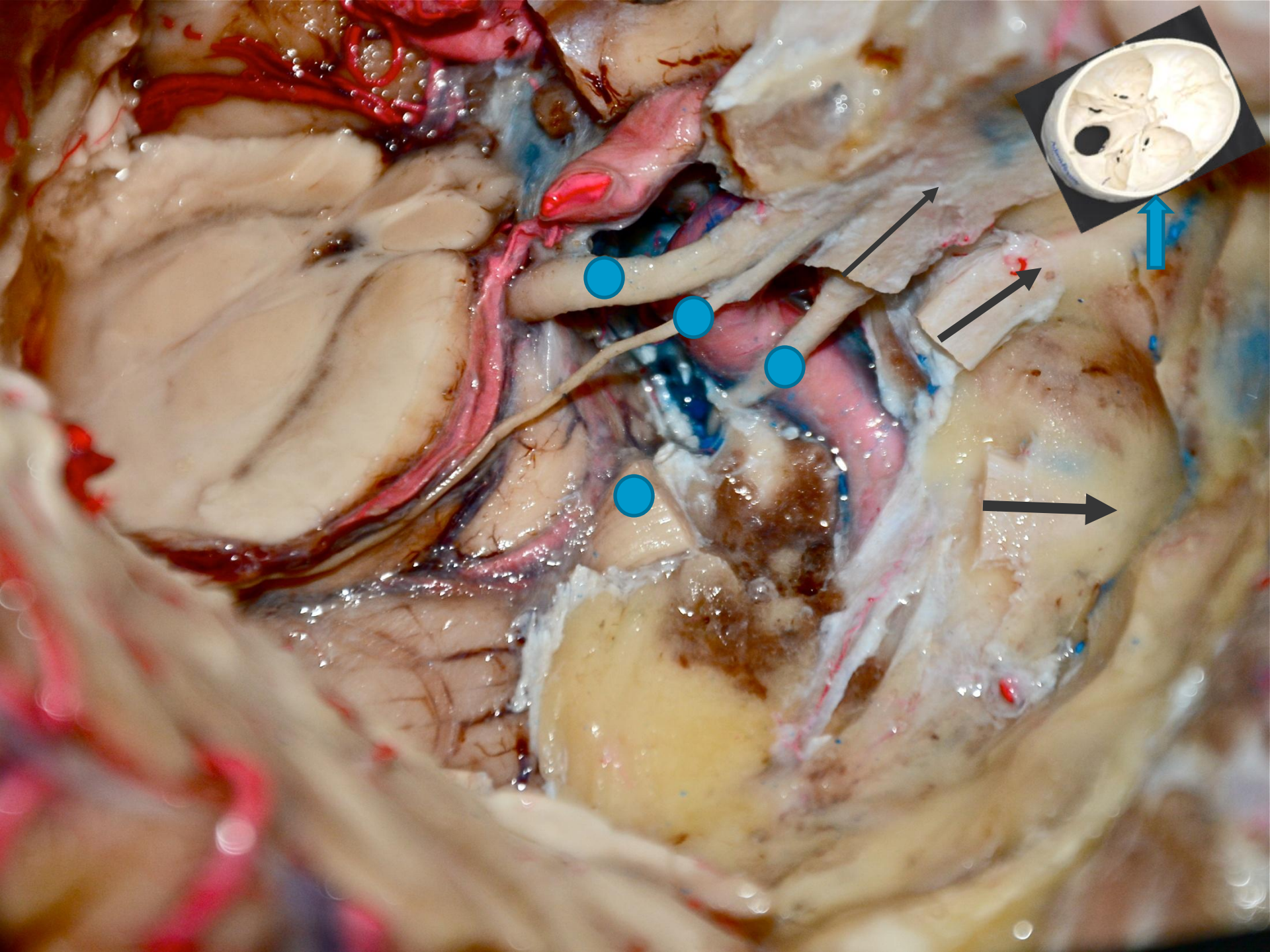
Νευρικές σχέσεις

Κοινό κινητικό νεύρο

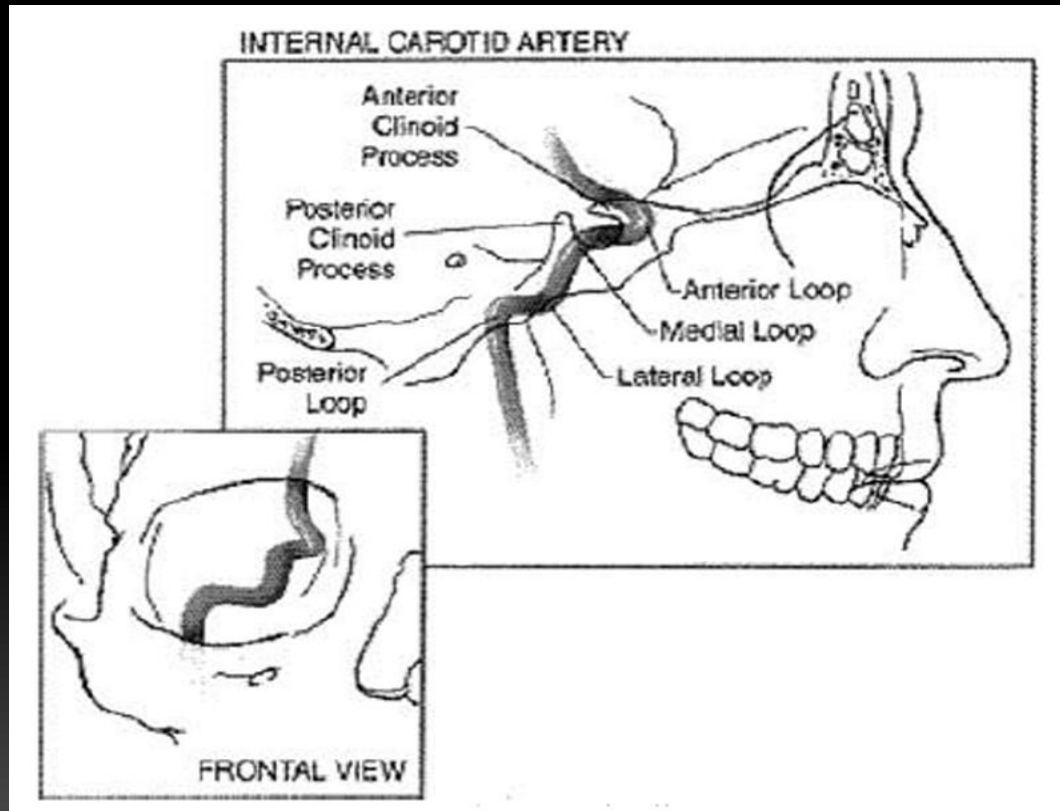
Τροχιλιακό νεύρο

Απαγωγό νεύρο

Τρίδυμο νεύρο



Ἐσω καρωτίδα και συμπαθητικές ίνες





Is the V2 part of the cavernous sinus?

- The lateral wall of the cavernous sinus

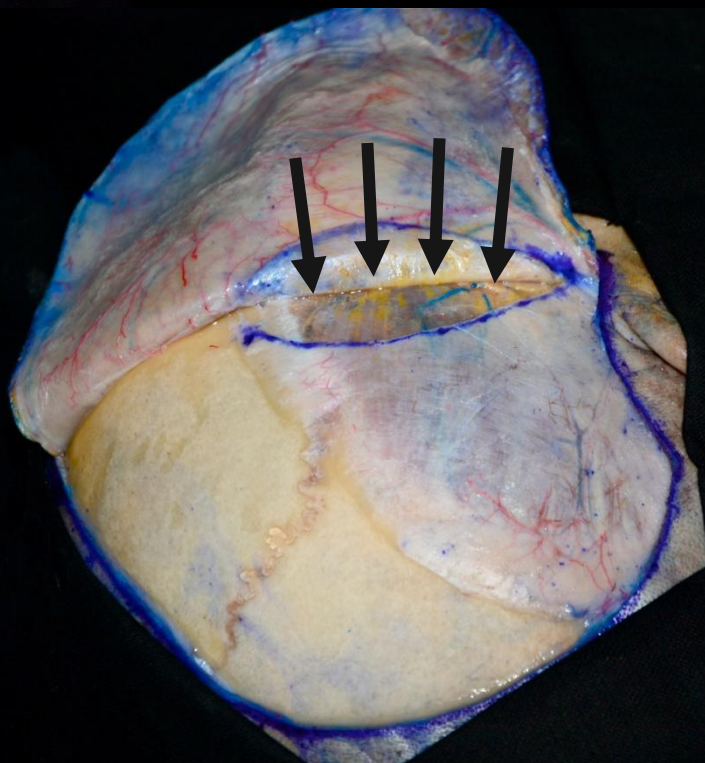
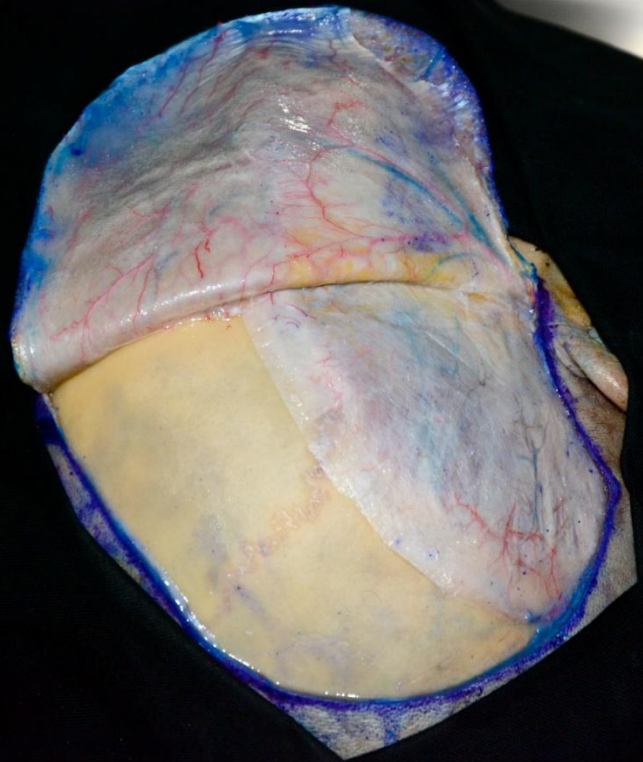
Felix Umansky and Hilen Nathan

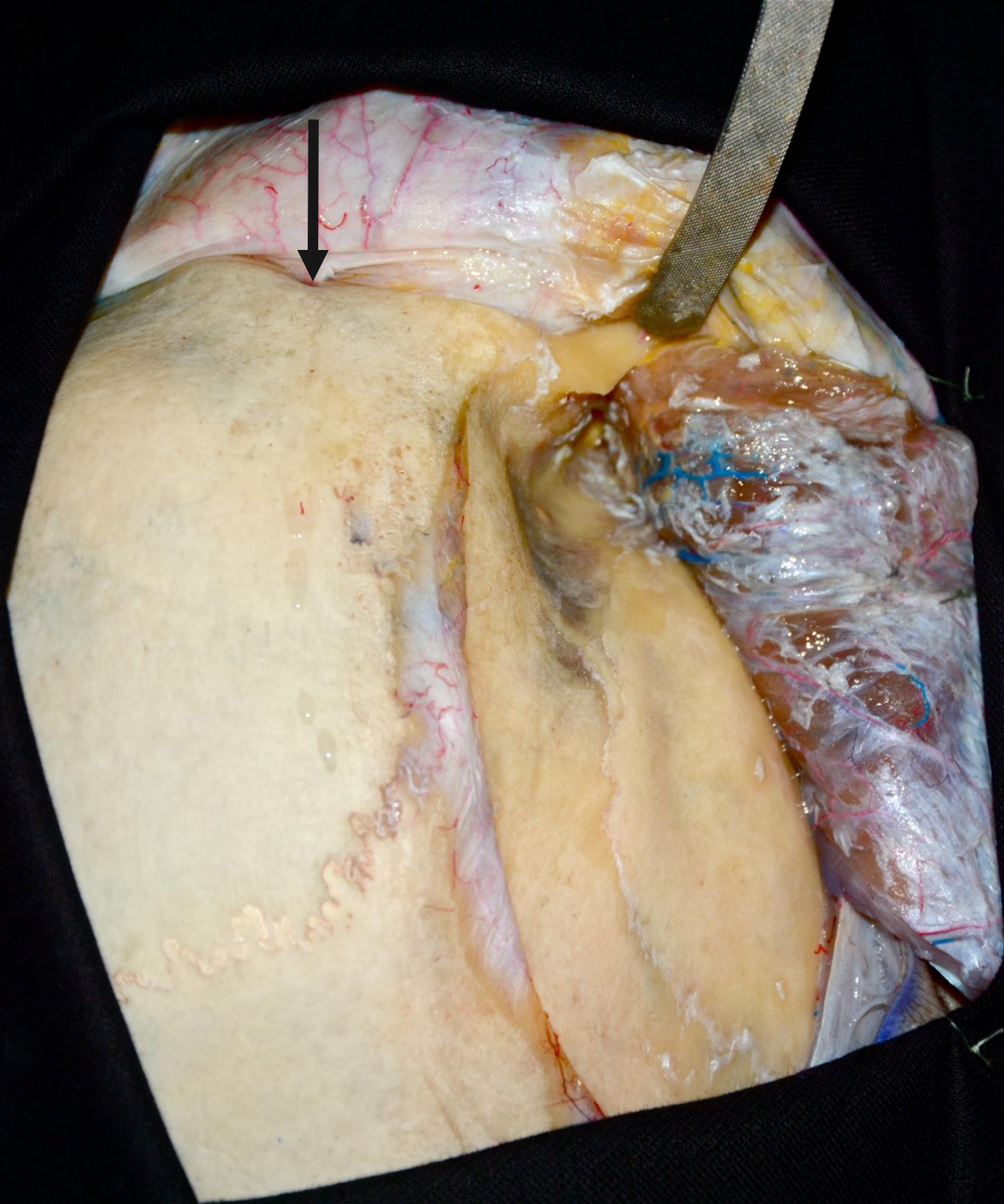
J Neurosurg 56: 228-234, 1982

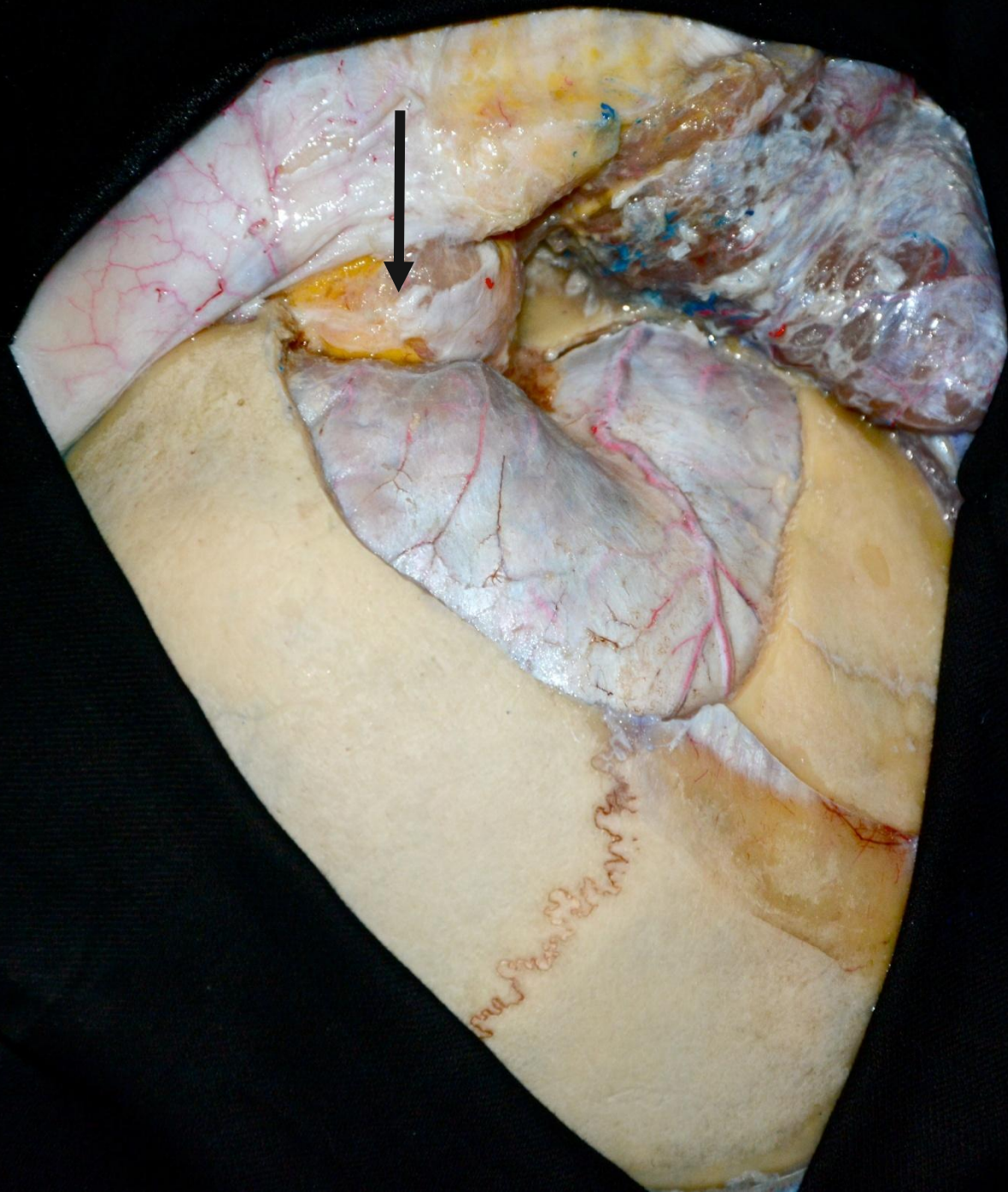
- Does the maxillary division of the trigeminal nerve traverse the cavernous sinus? An anatomical study and review of the literature.

Tubss RL. et al.

Surg Radiology Anat 2008, Feb ; 30(1): 37-40







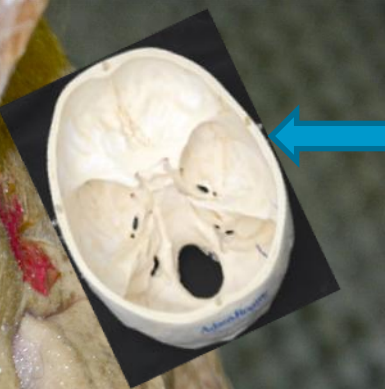
STEPS OF THE CAVERNOUS SINUS DISSECTION

■ Extradural stage

- Orbital roof-optic canal
- SOF
- F.R
- F.O
- Glasscock's triangle

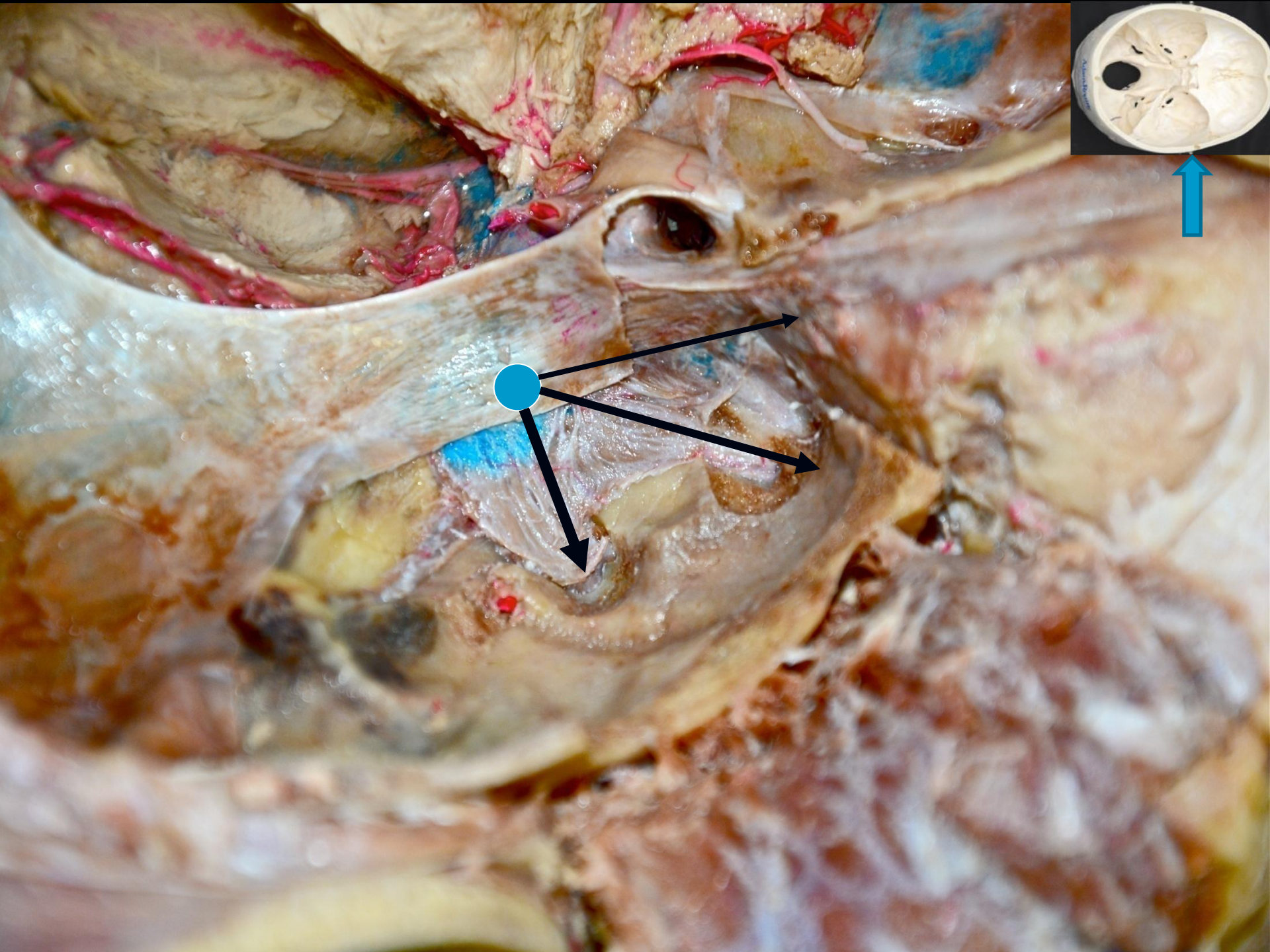
■ Intradural stage

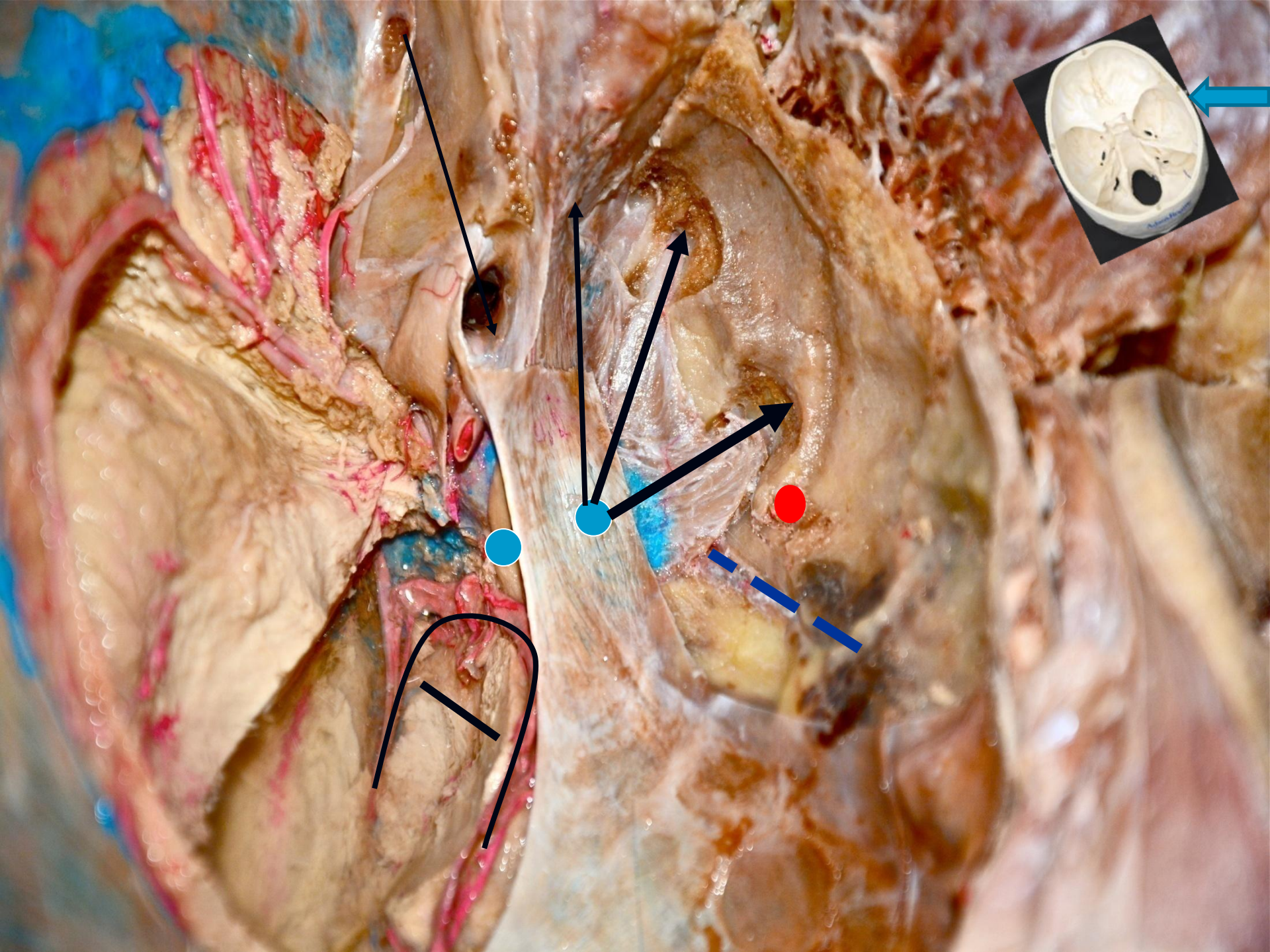
- Dural opening
- Carotid rings
- Oculomotor nerve
- Trochlear nerve
- Trigeminal nerve
- Abducens nerve

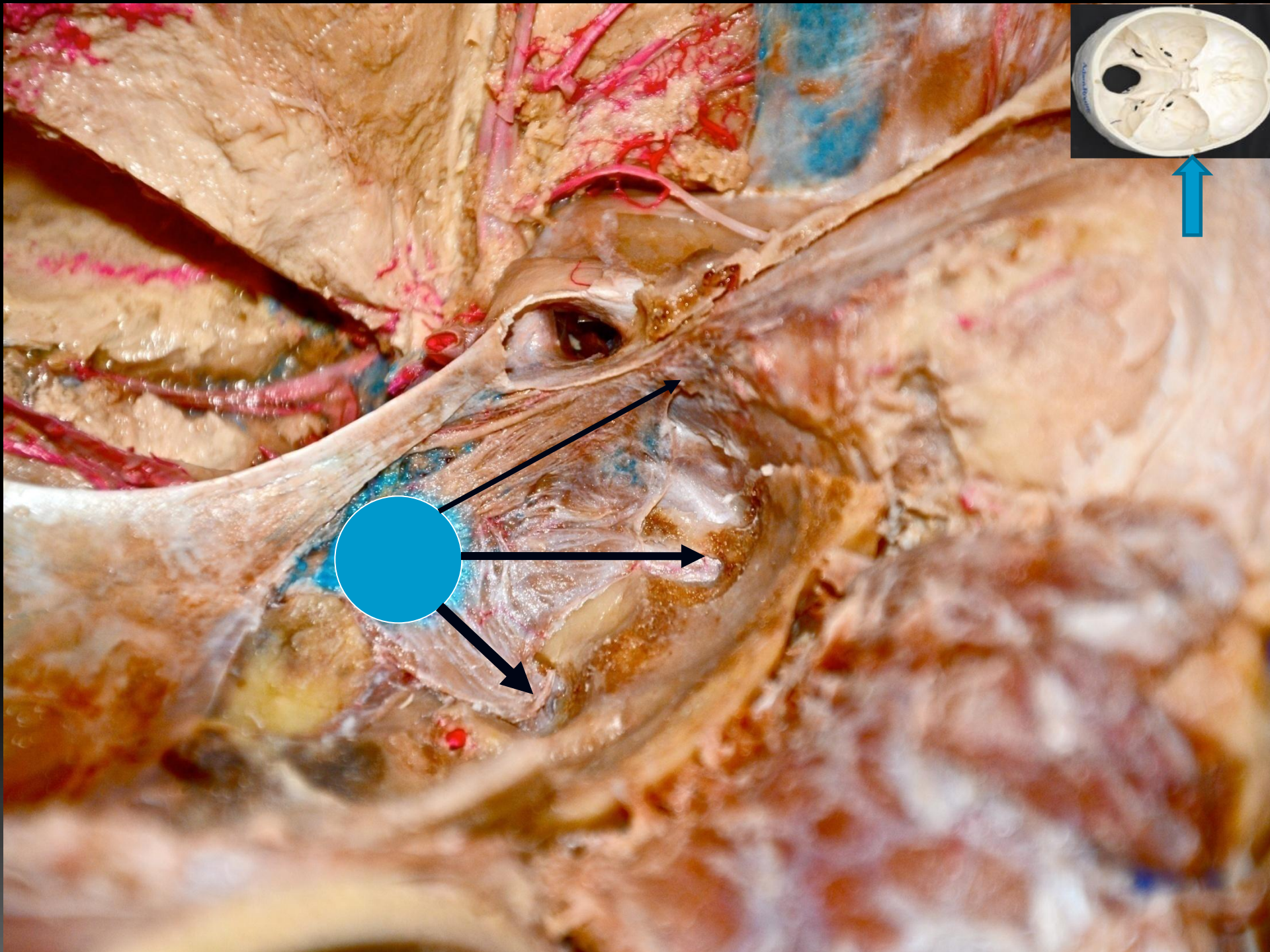


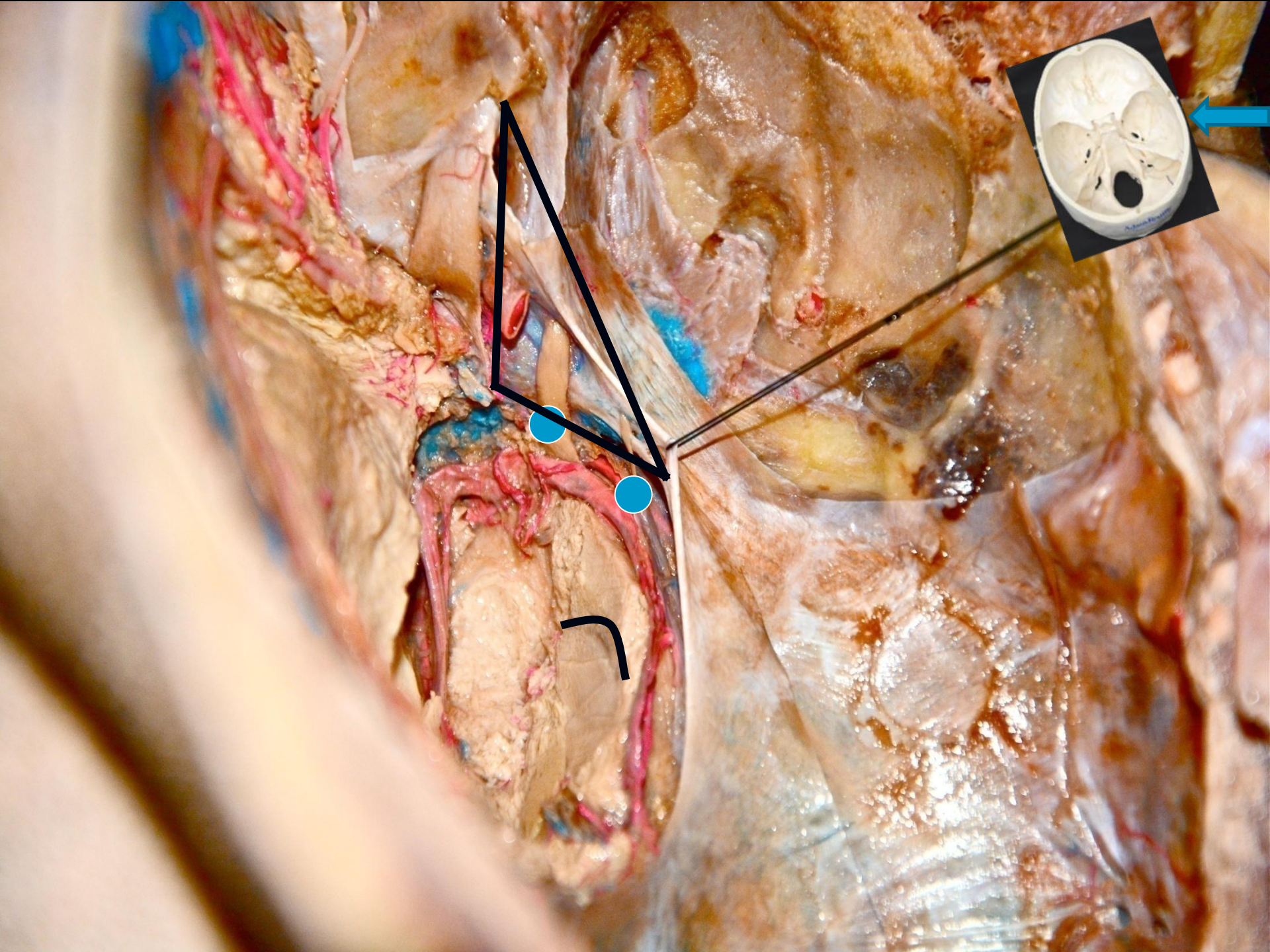


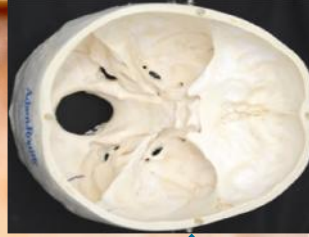


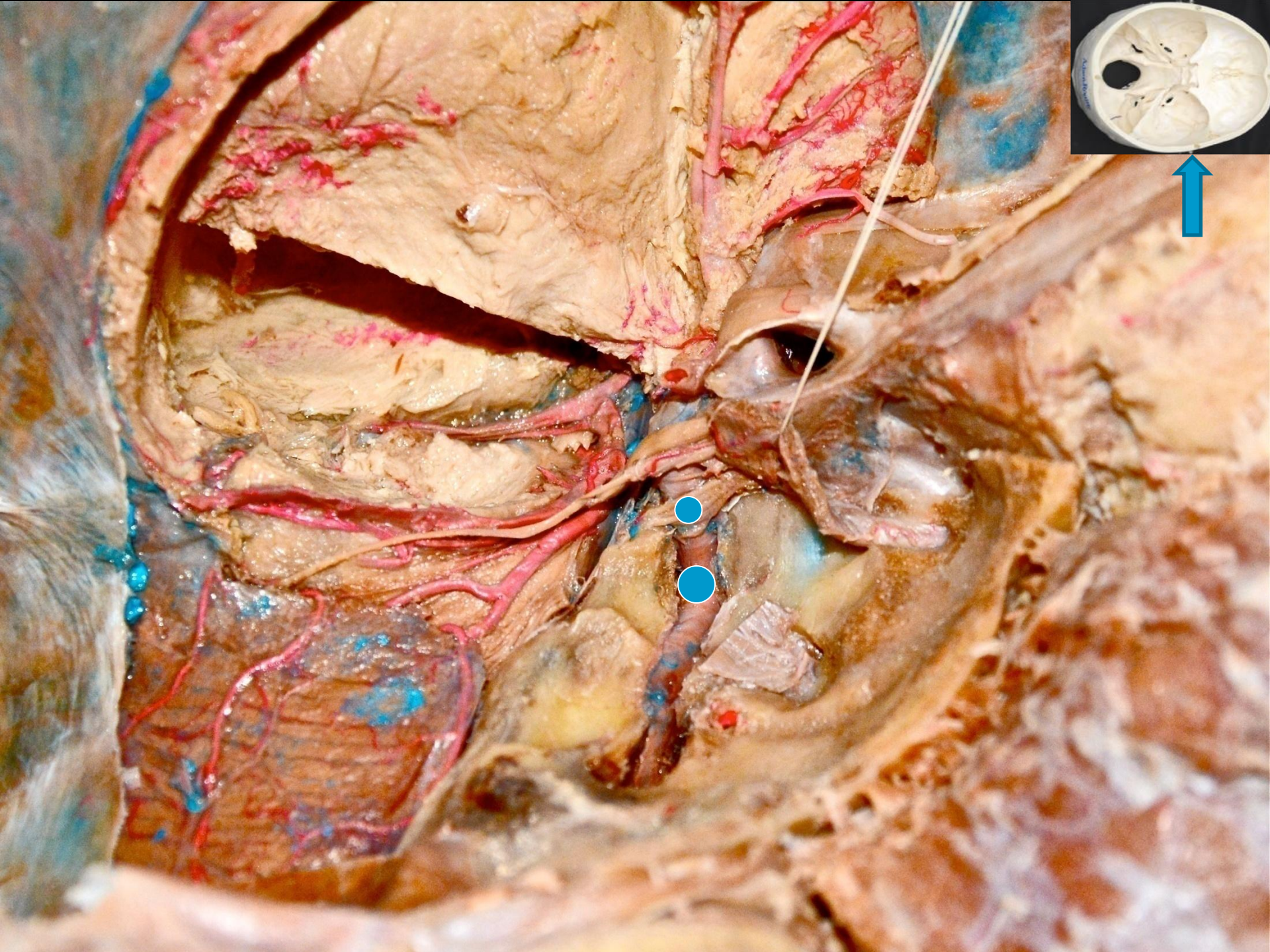


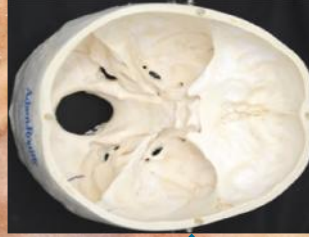
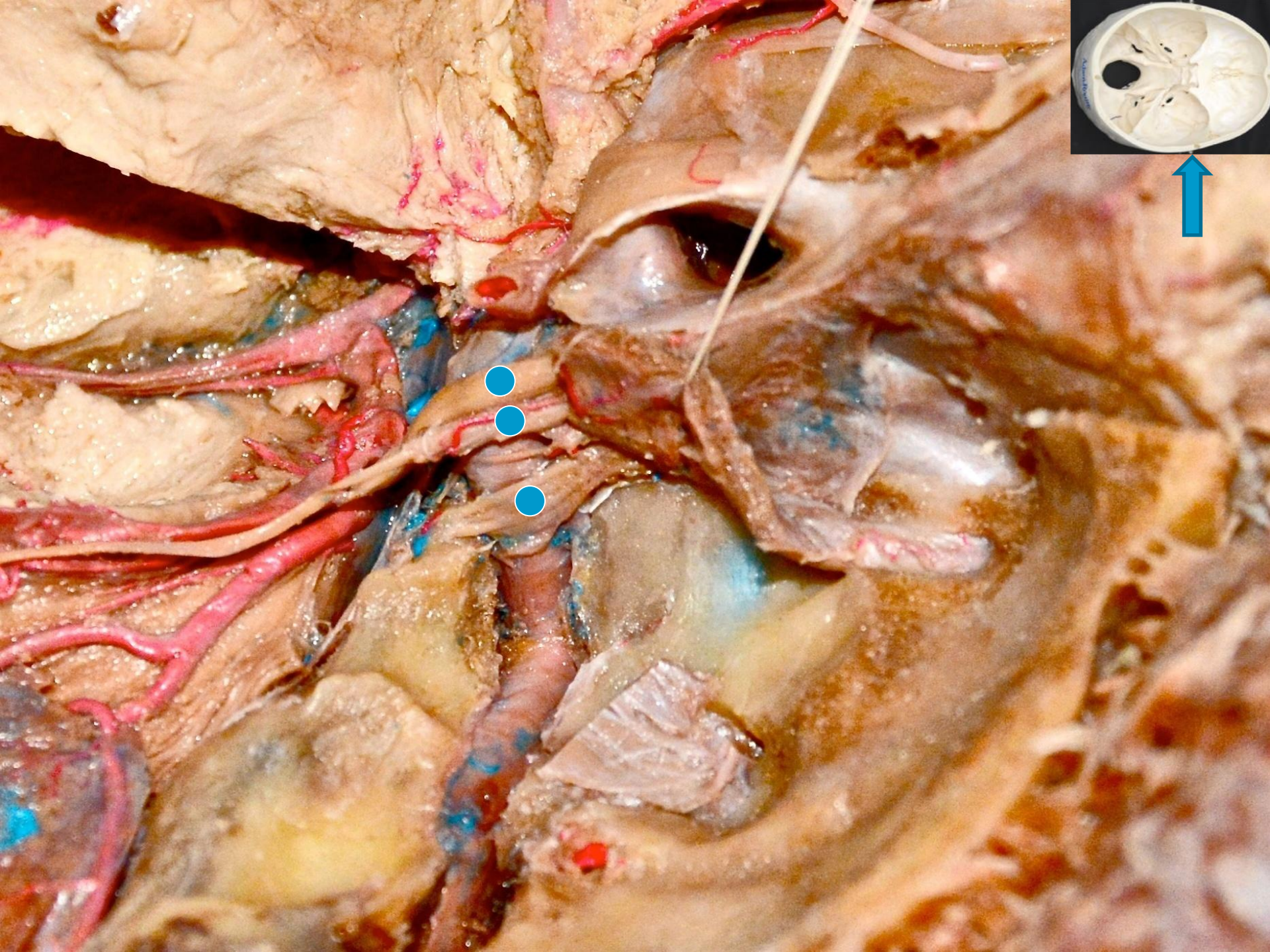


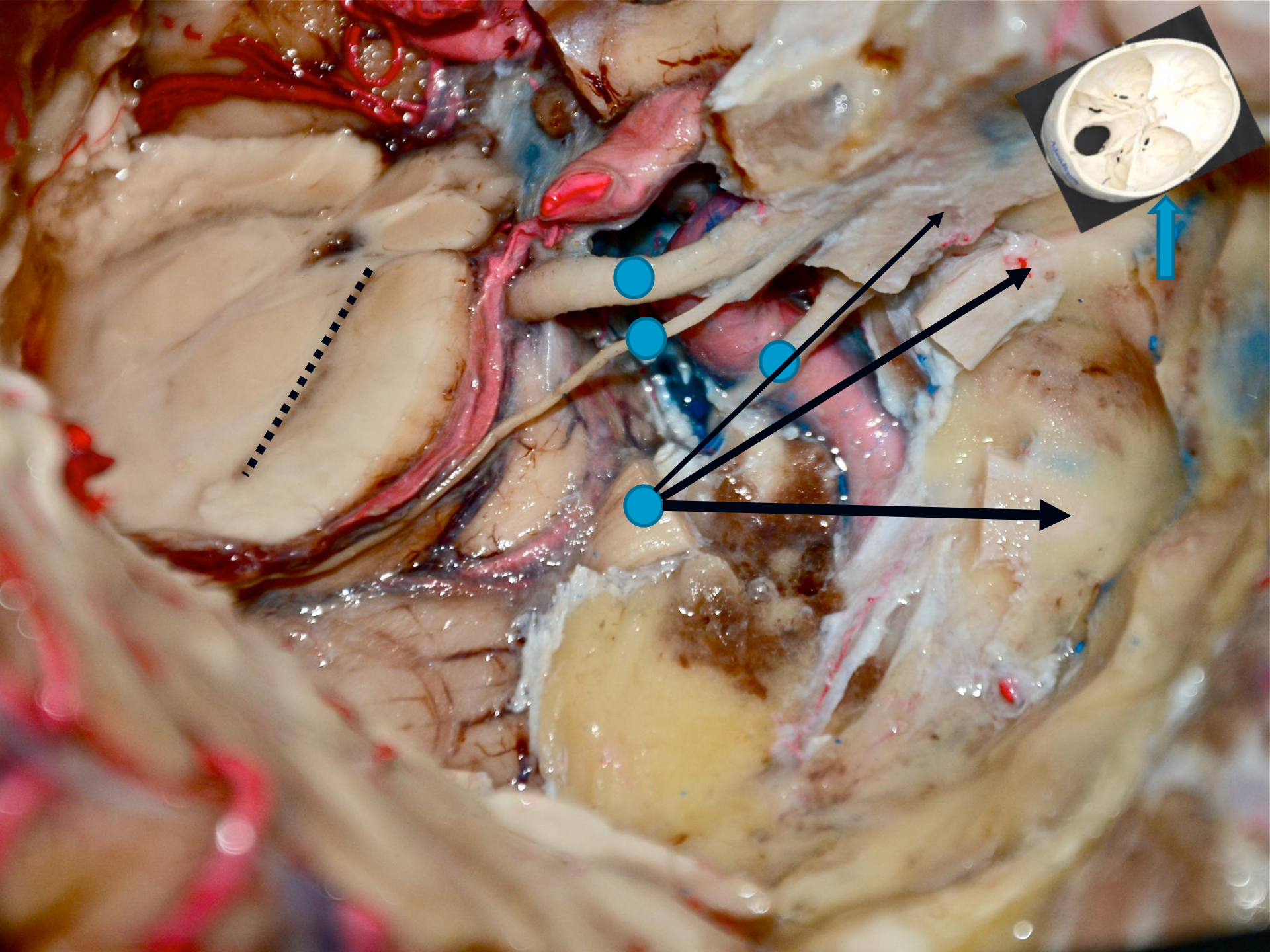


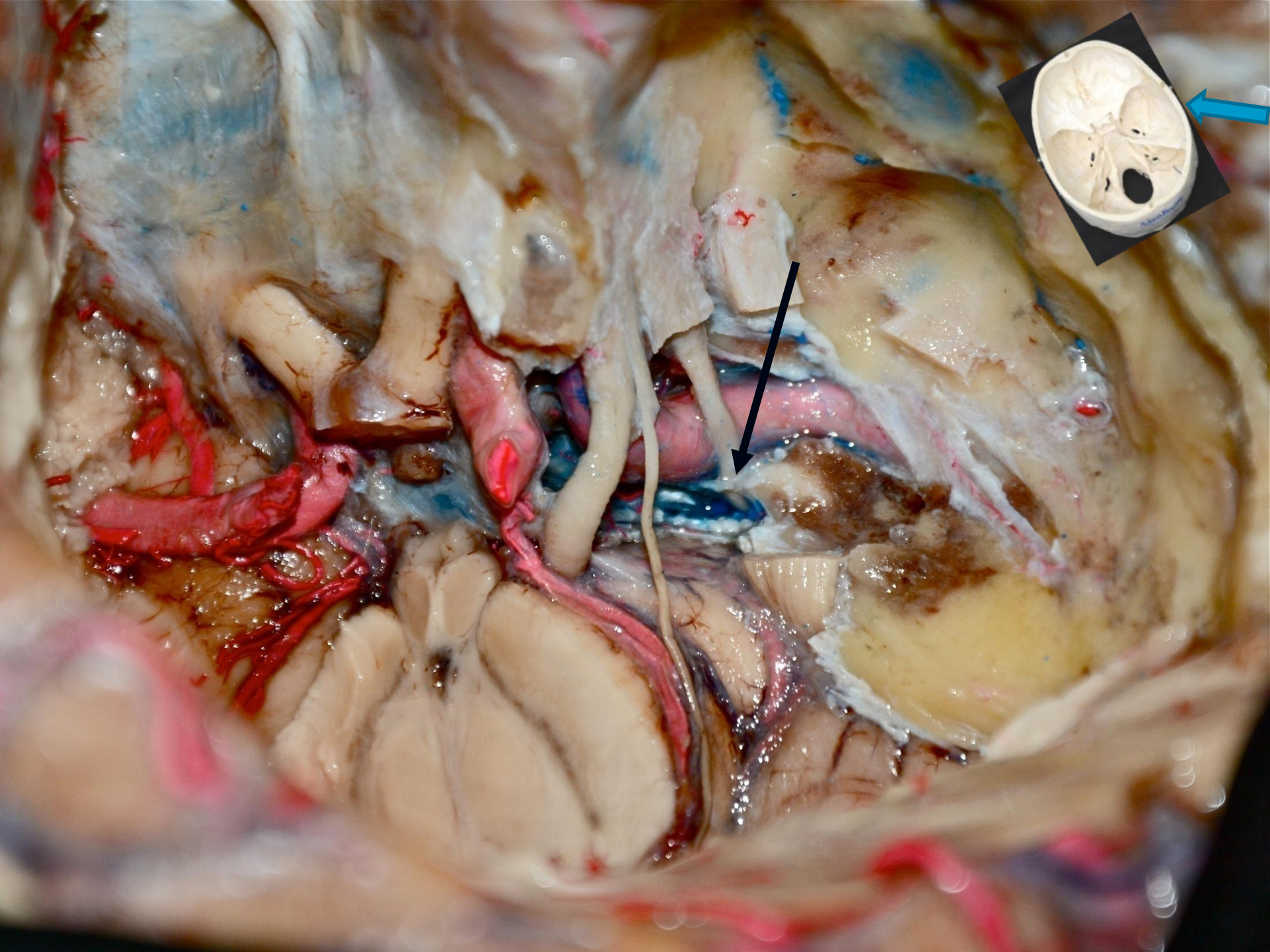




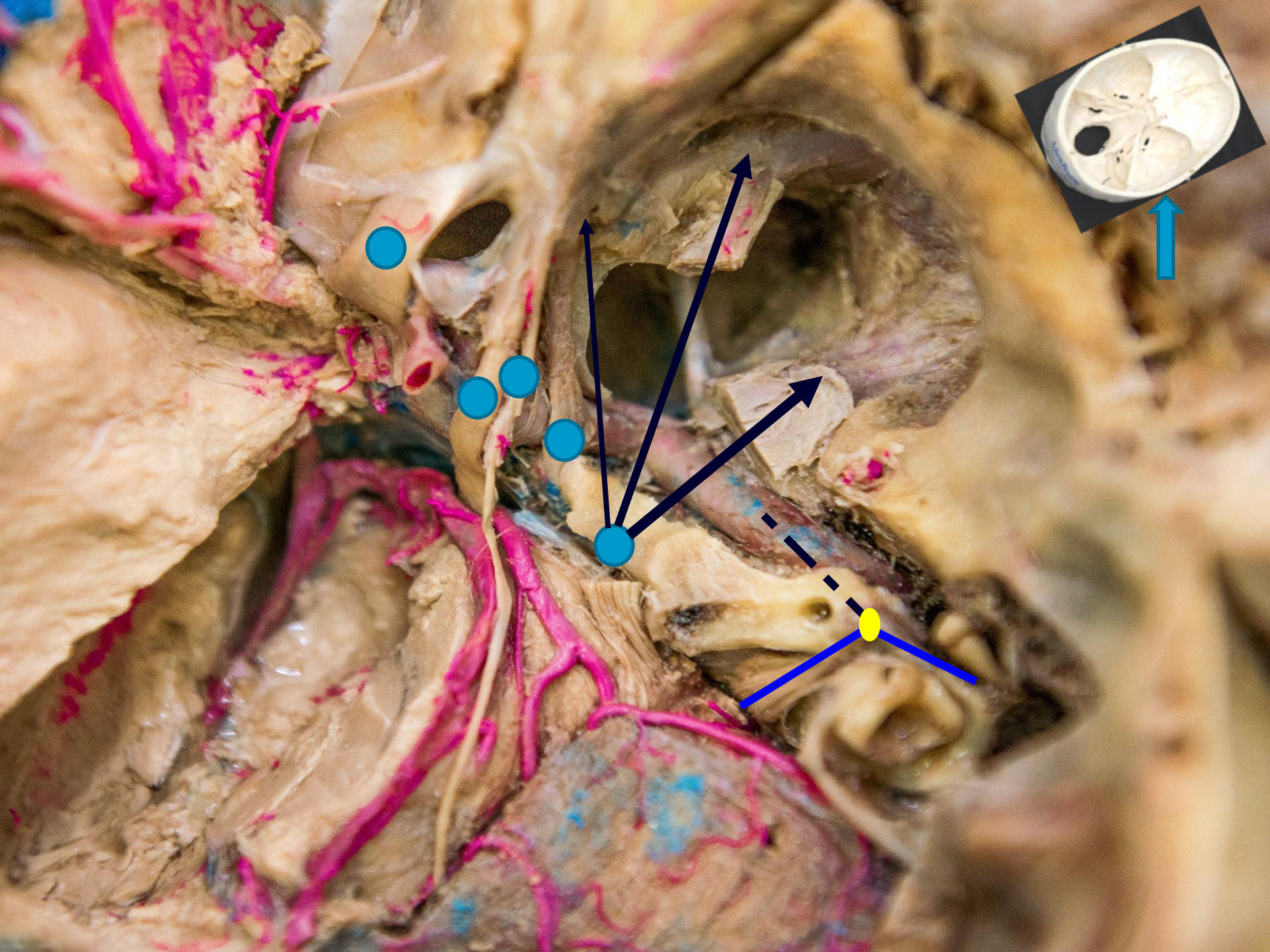


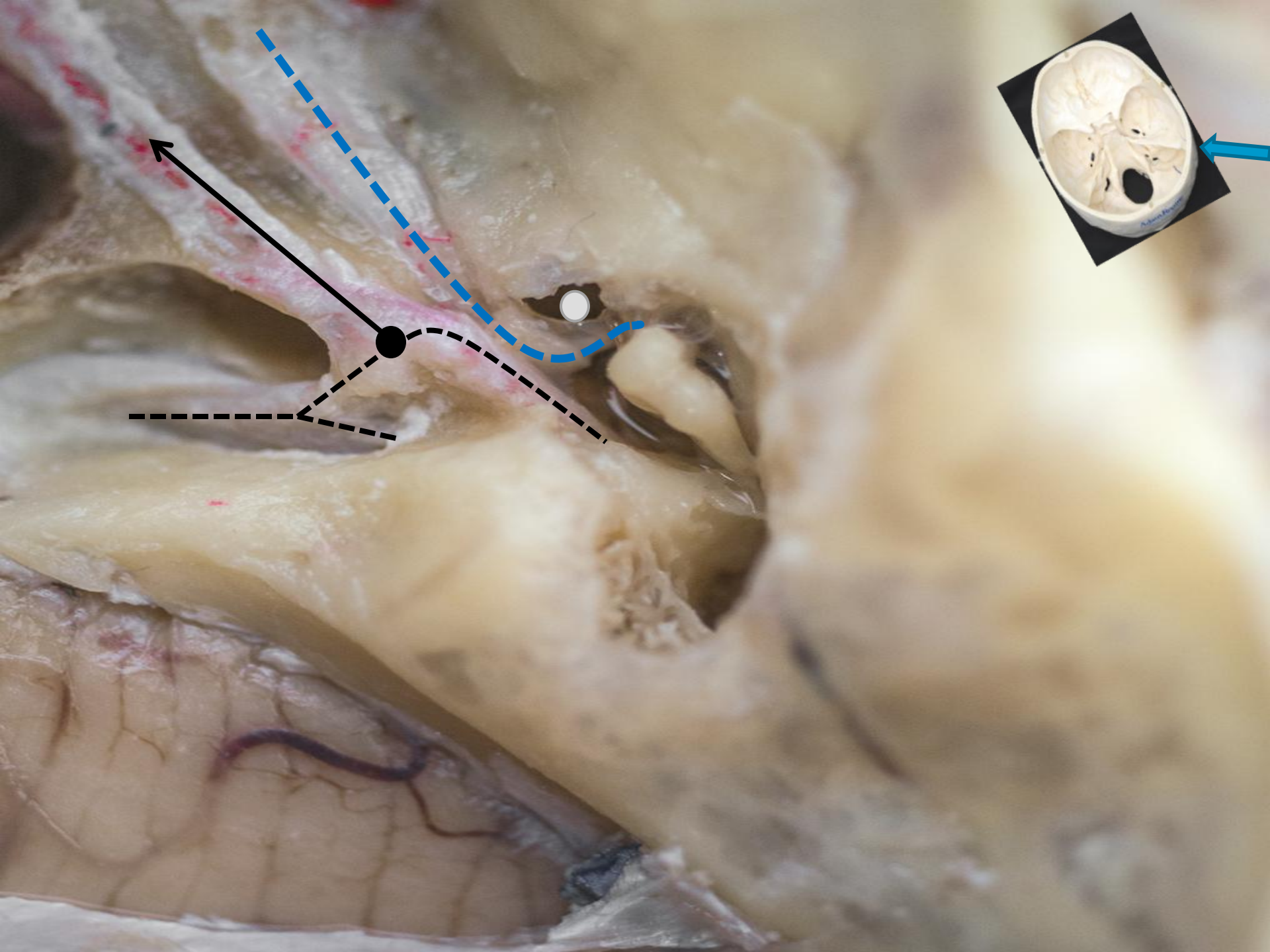


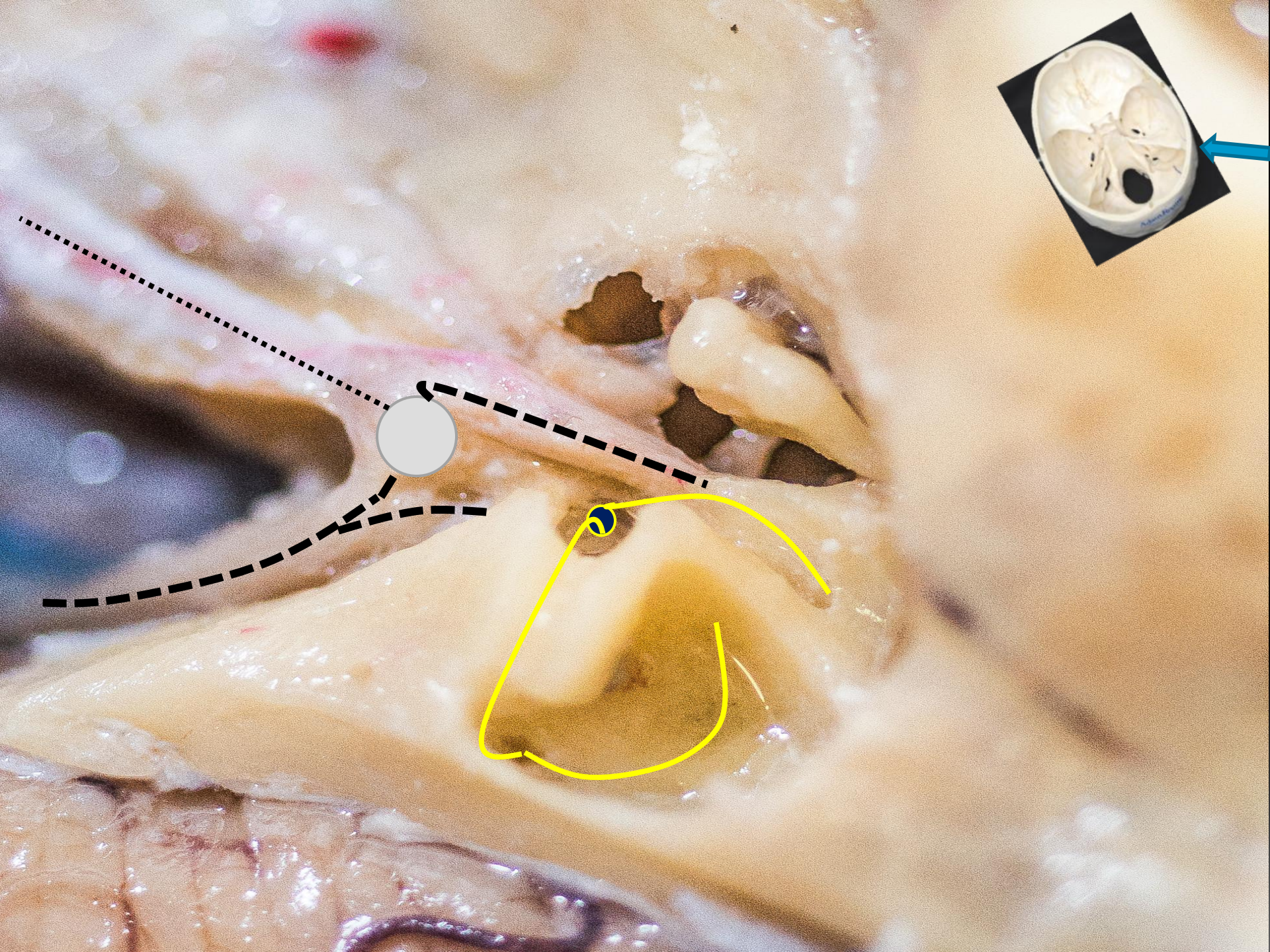


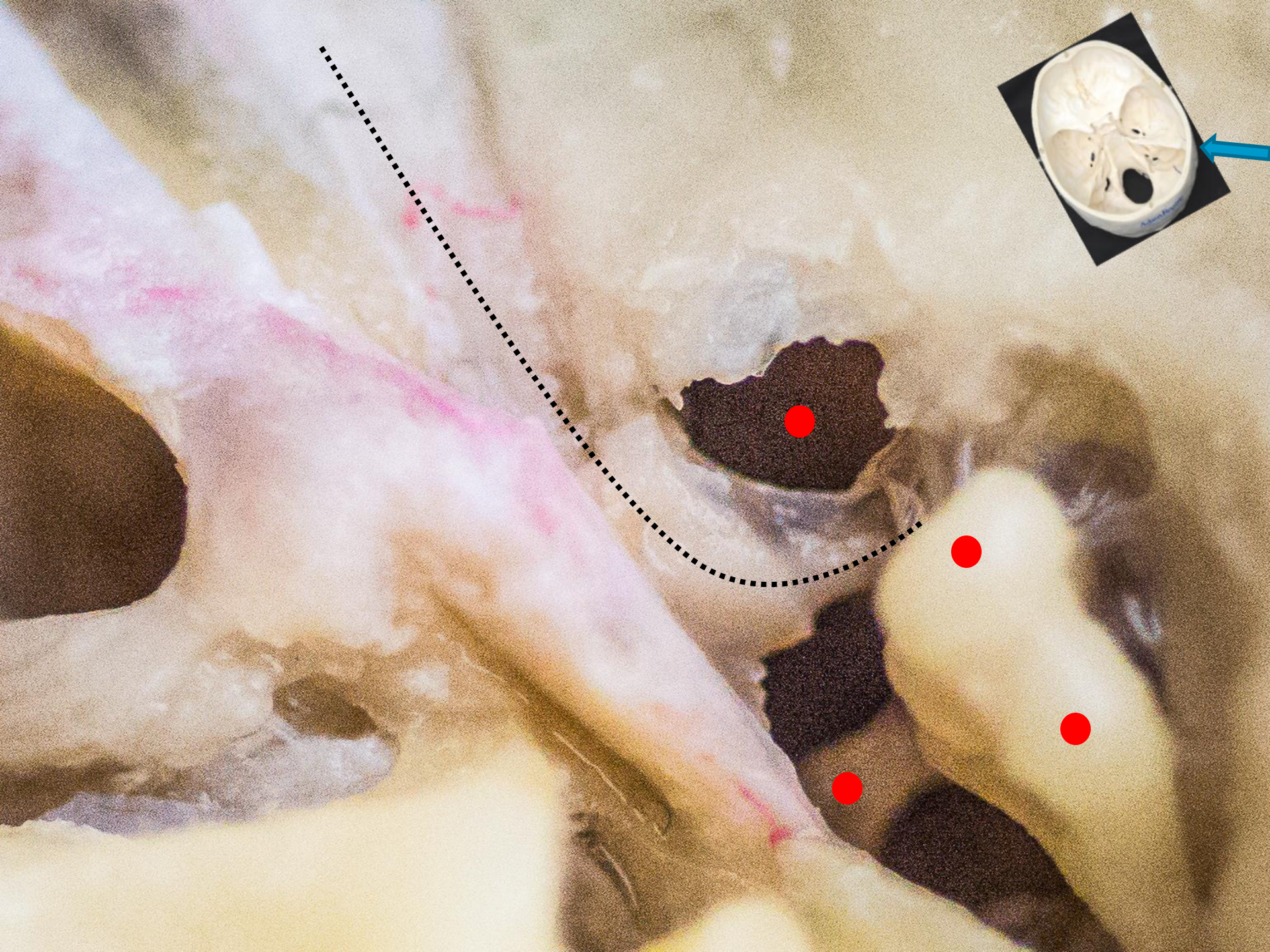












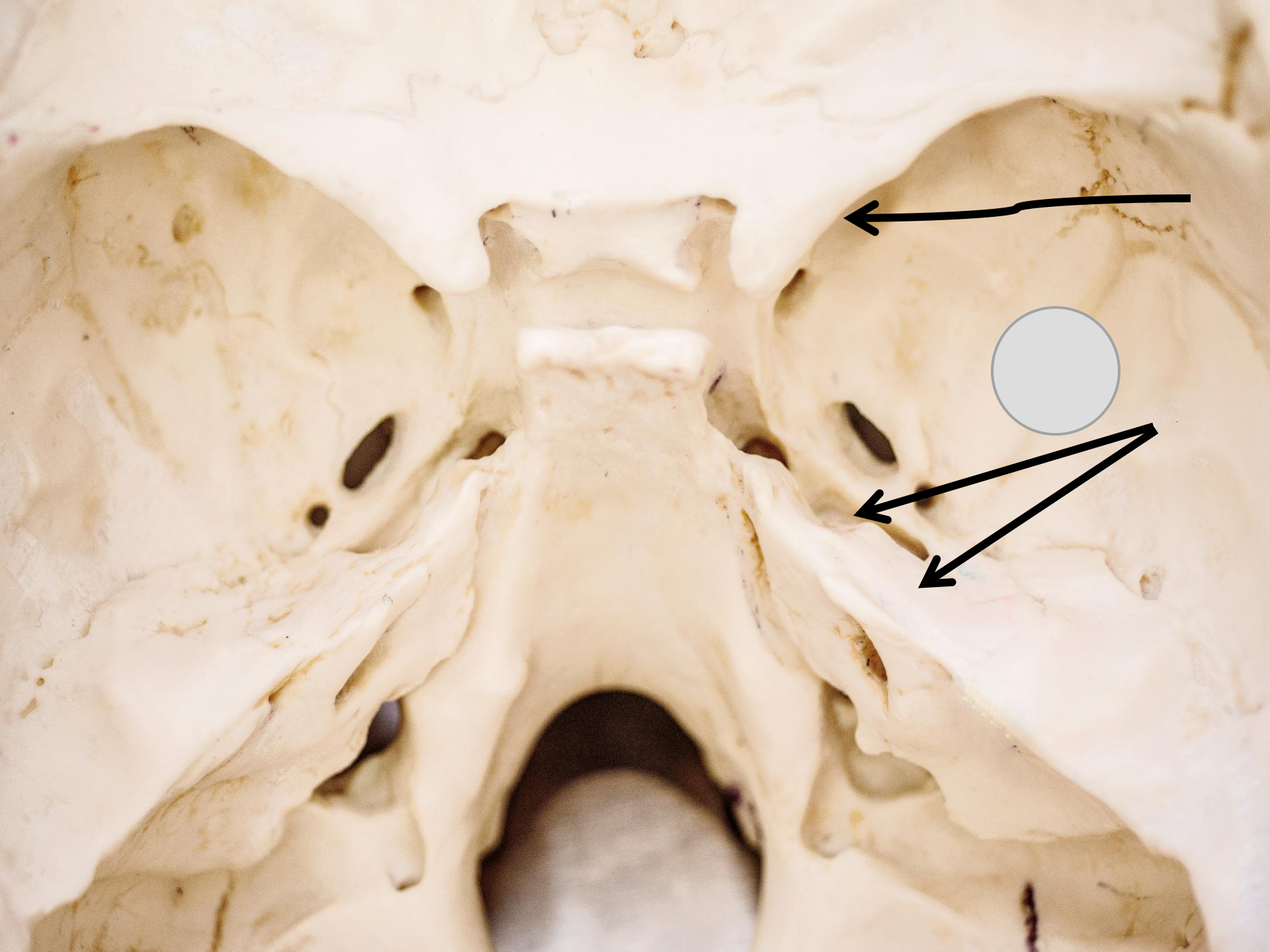


Four black arrows pointing to a specific anatomical structure.

Blue dot marking a specific anatomical structure.

Blue dot marking a specific anatomical structure.

Blue dot marking a specific anatomical structure.



ΣΥΜΠΕΡΑΣΜΑ

Η ισχυρή γνώση της χειρουργικής ανατομίας της περιοχής του μέσου κρανιακού βόθρου αποτελεί το θεμέλιο πάνω στο οποίο κάθε επιτυχής προσπέλαση βασίζεται.

