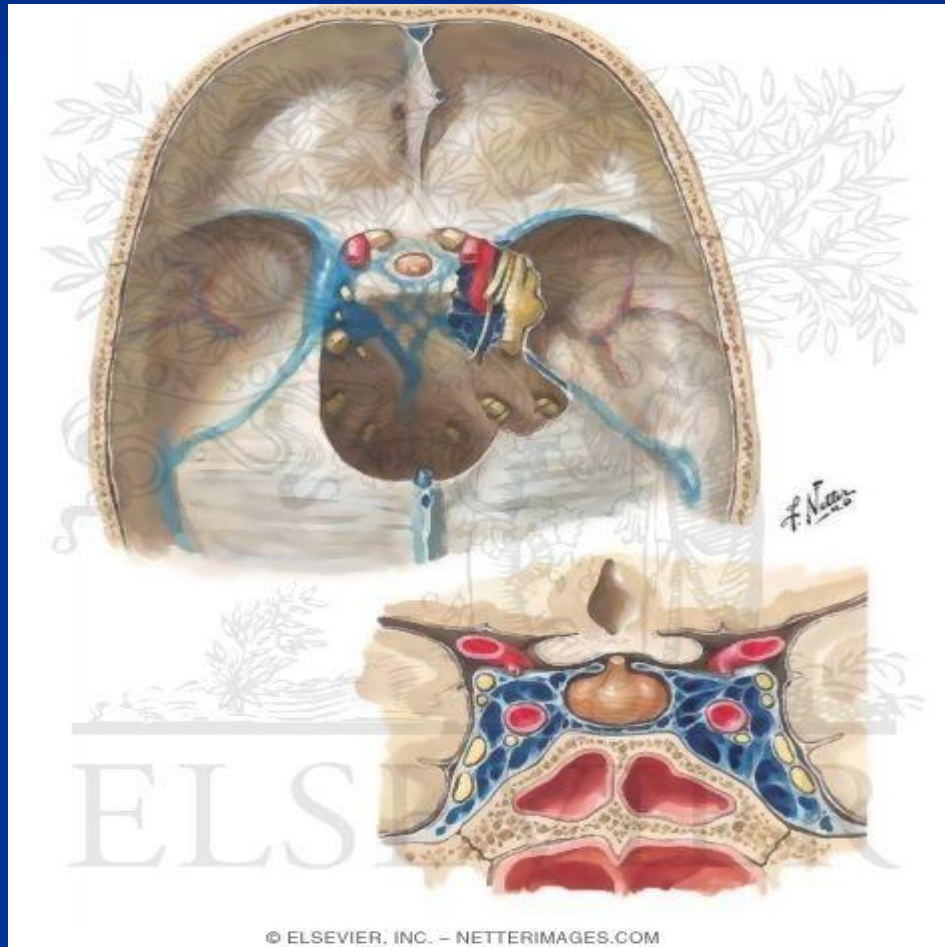
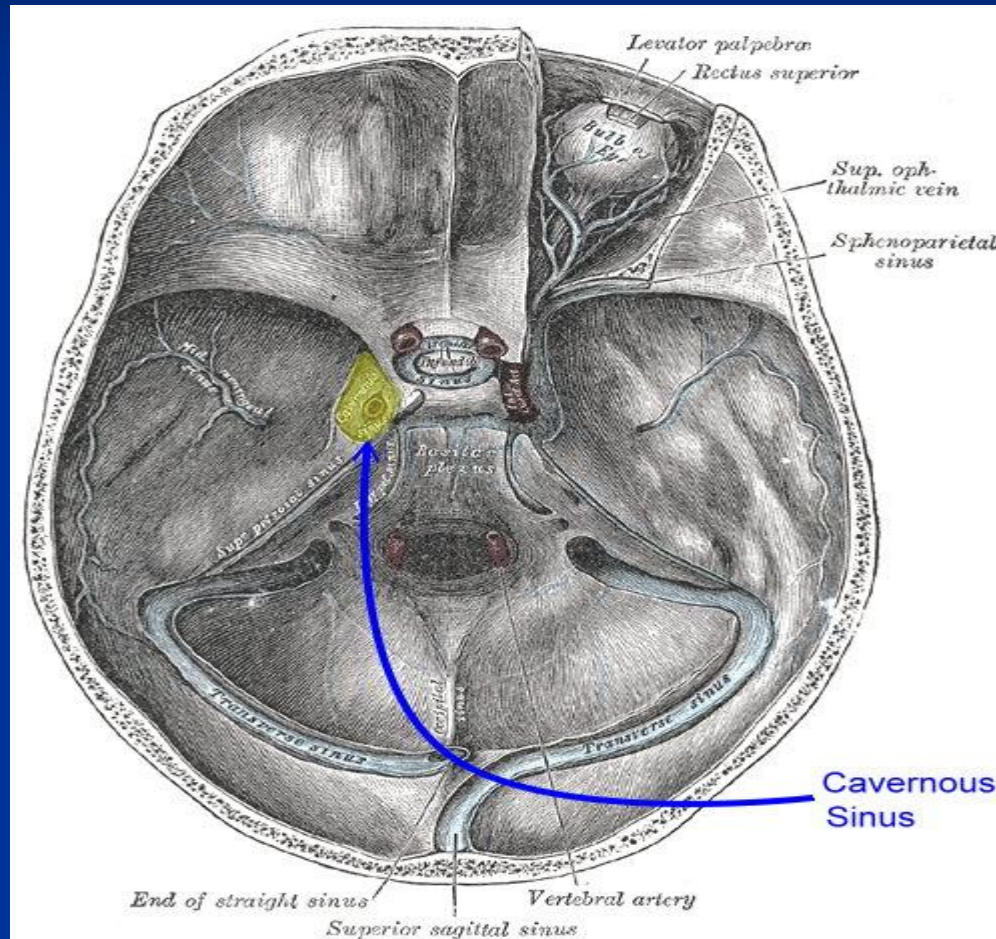


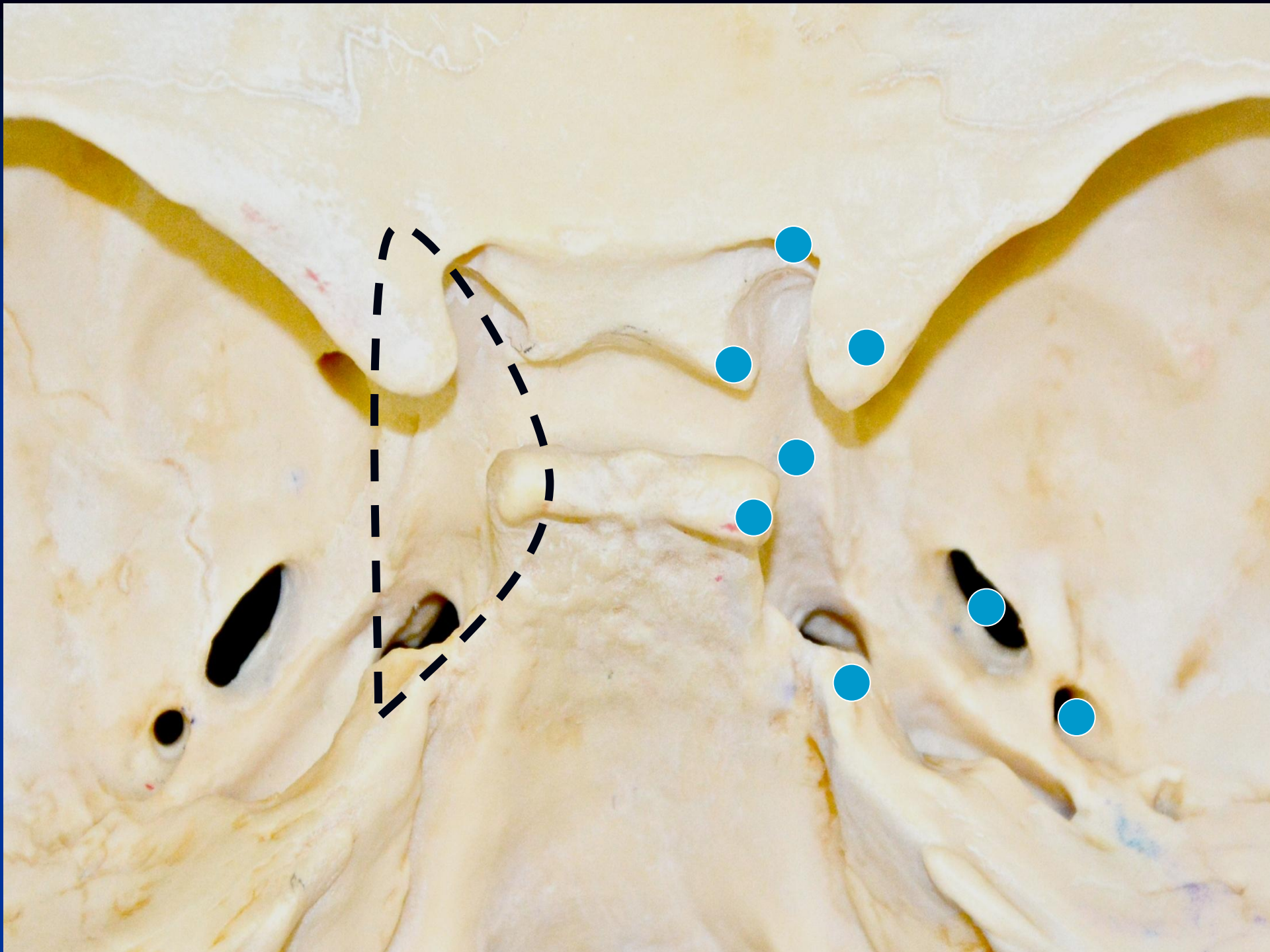
Once considered a 'no man land'.....



- is a focal region for skull base surgery.







# Τοιχώματα

4 τοιχώματα

Άνω(οροφή)

πλάγιο

έσω

Οπίσθιο

# Περιεχόμενα

Έσω Καρωτίδα

Συμπαθητικές ίνες

Φλεβικό πλέγμα

Κοινό Κινητικό Νεύρο

Τροχιλιακό Νεύρο

Τρίδυμο Νεύρο

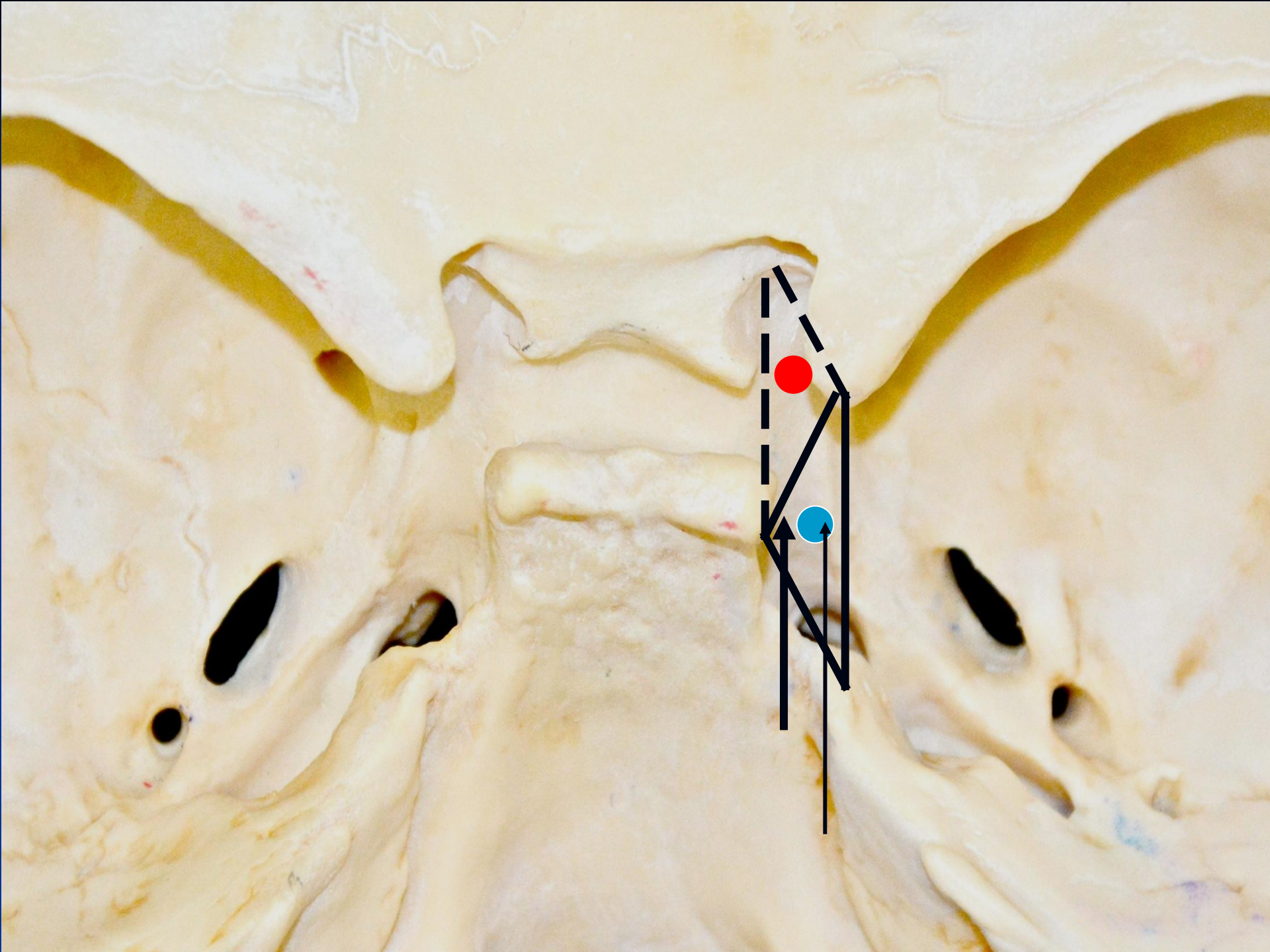
Απαγωγό Νεύρο





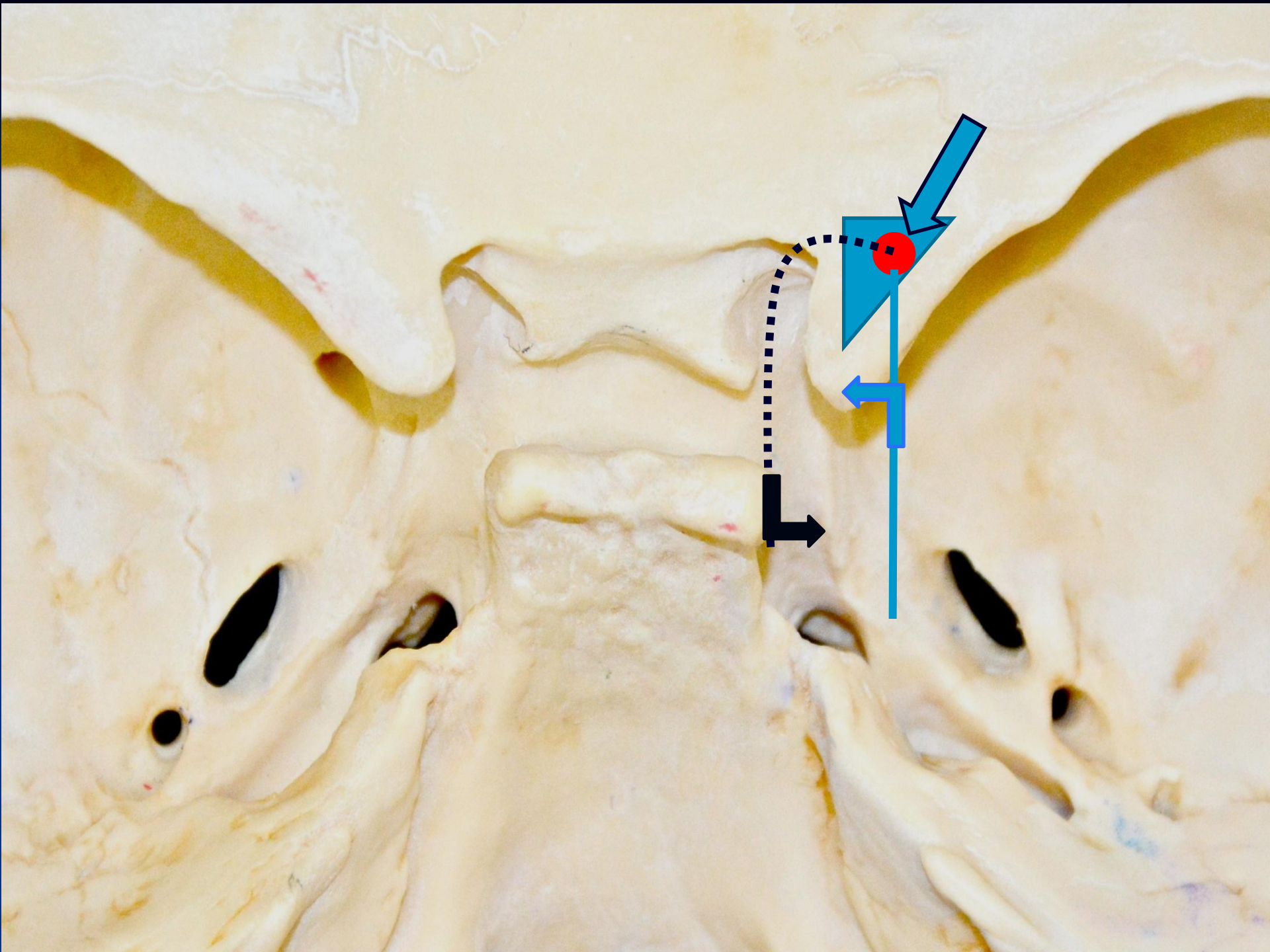
# Άνω Τοίχωμα(Οροφή)

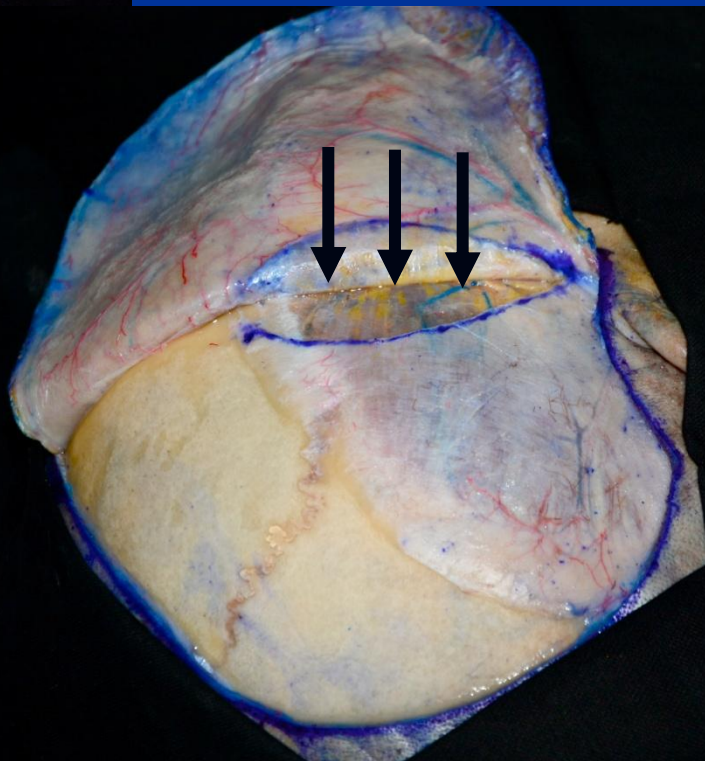
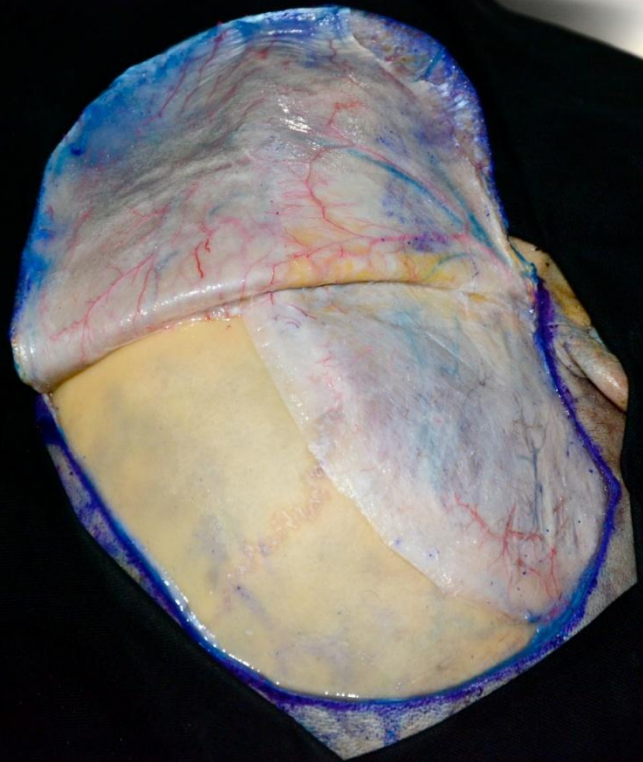




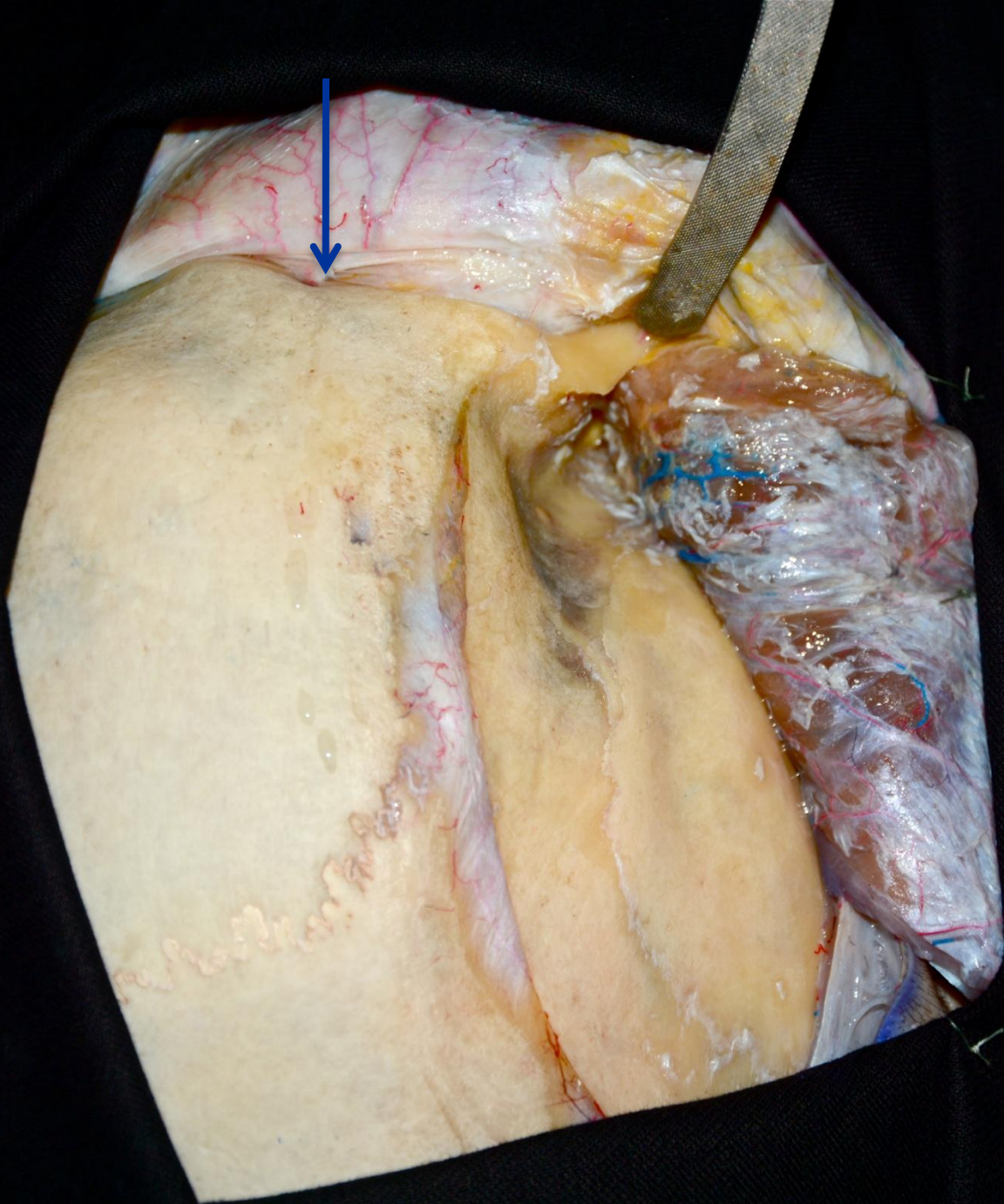


Πλάγιο/Έσω Τοίχωμα









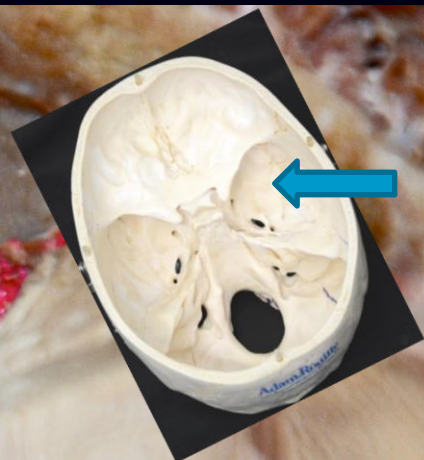








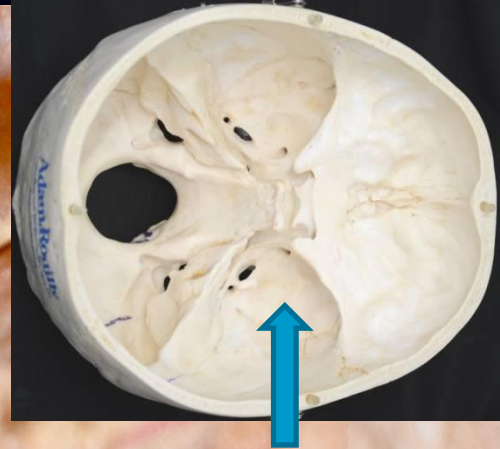
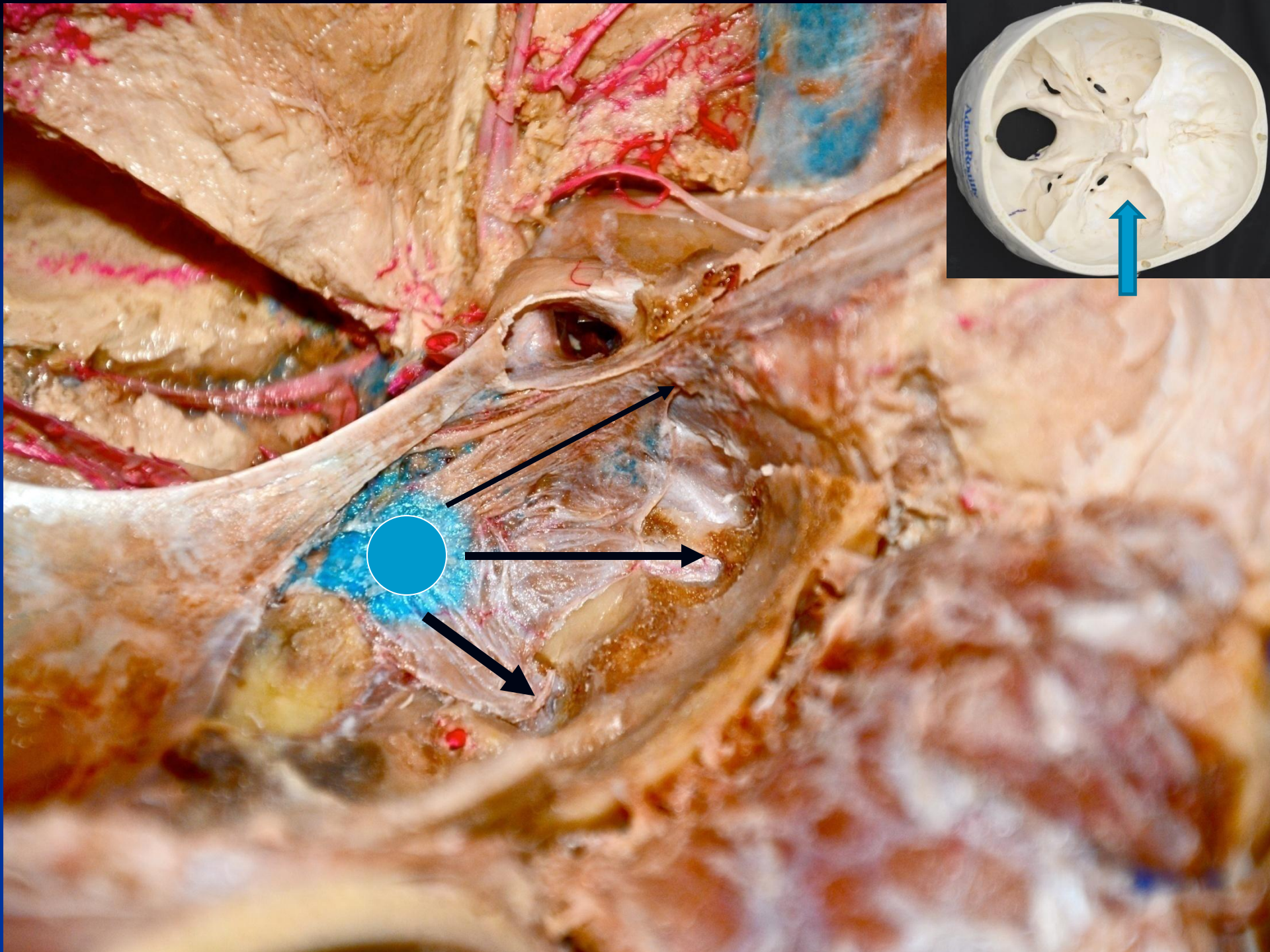




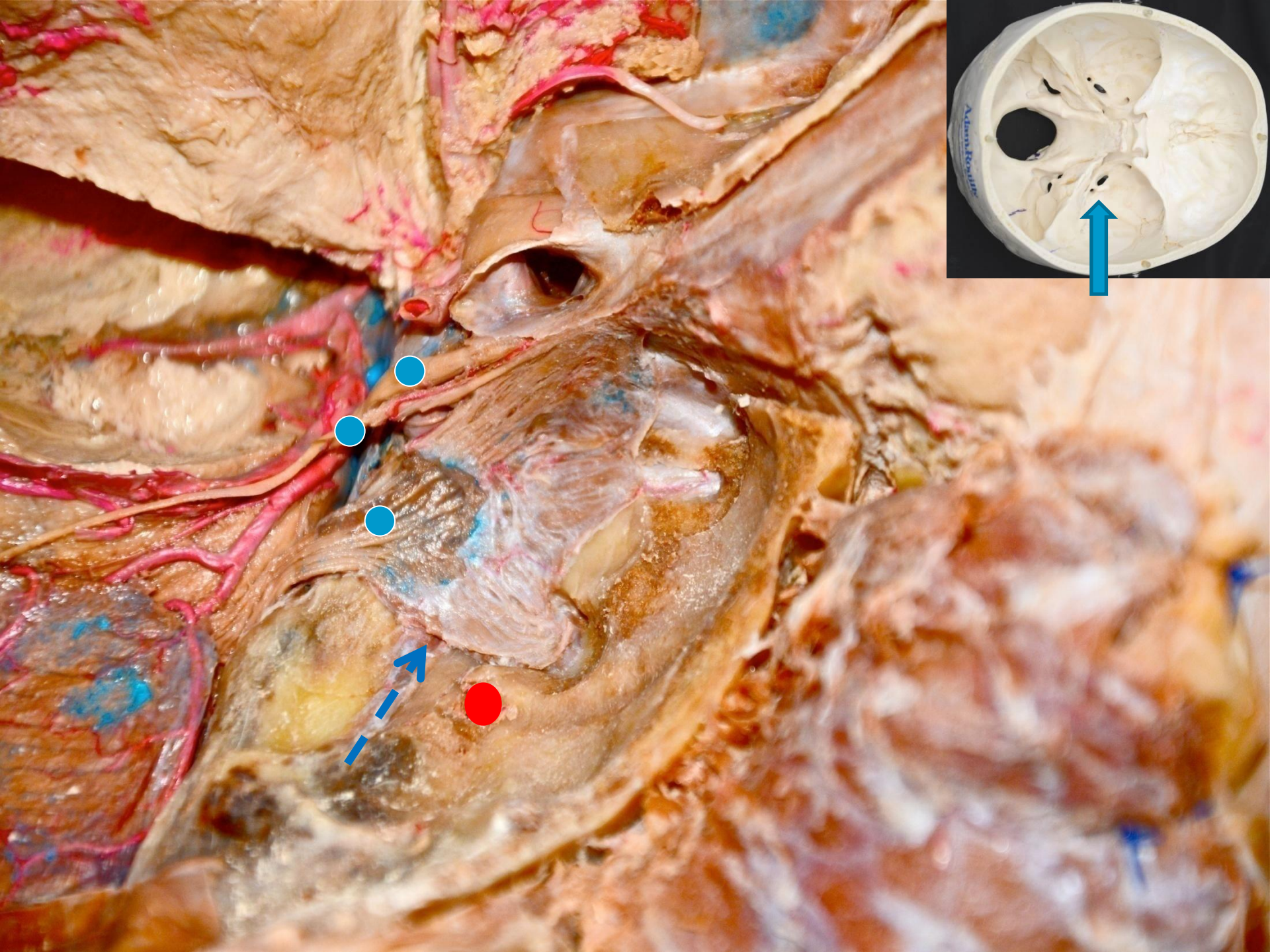




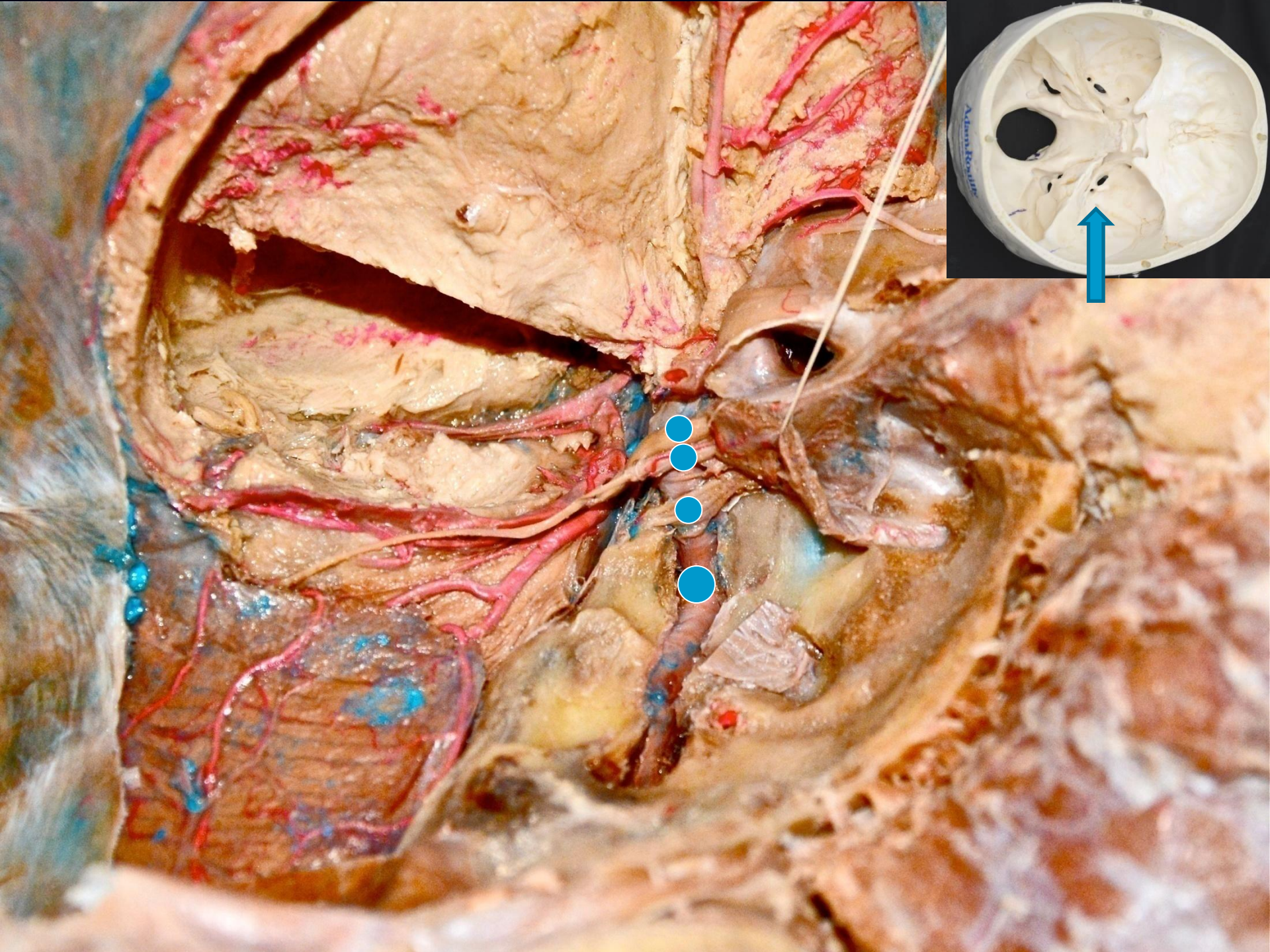




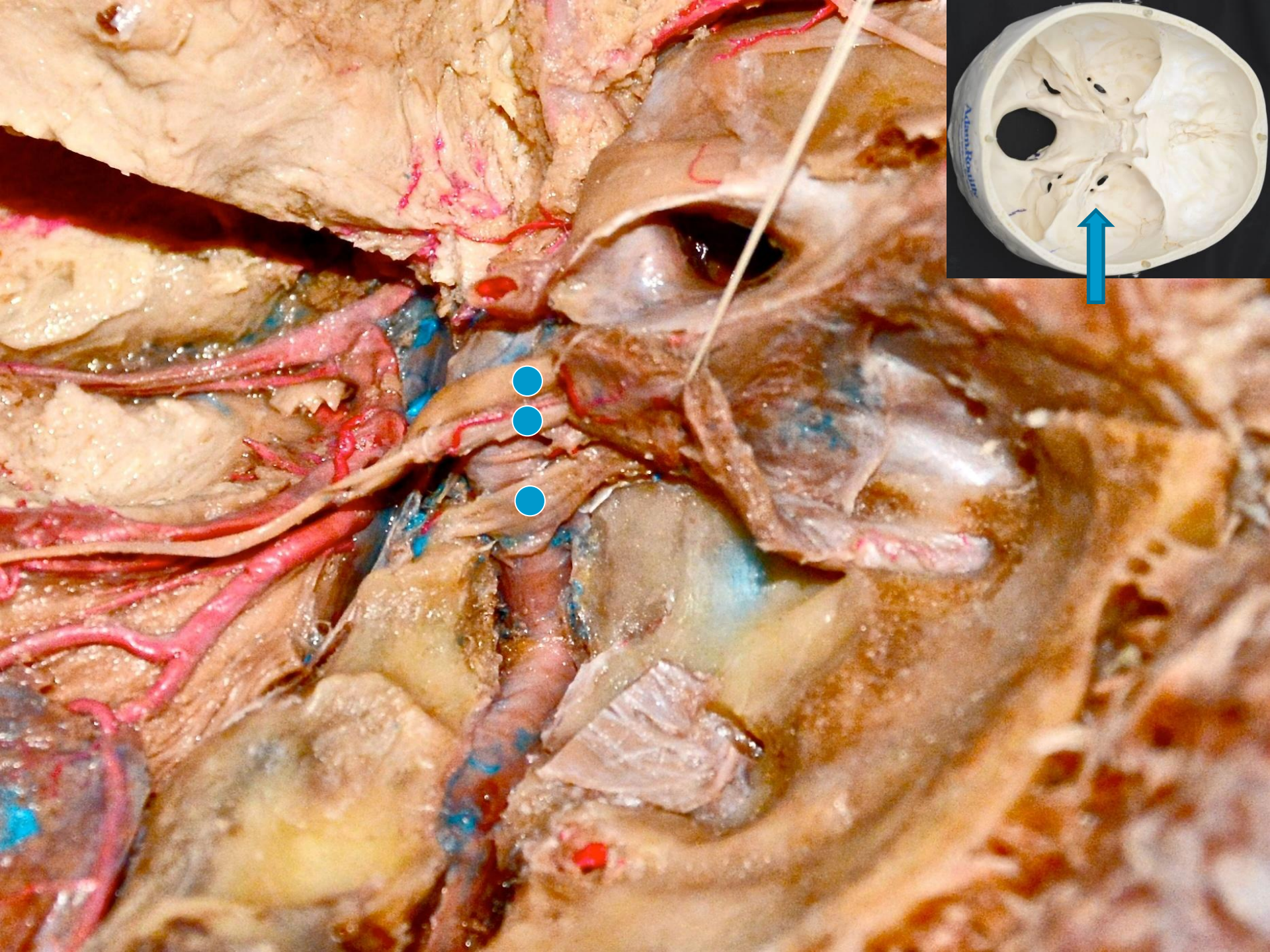




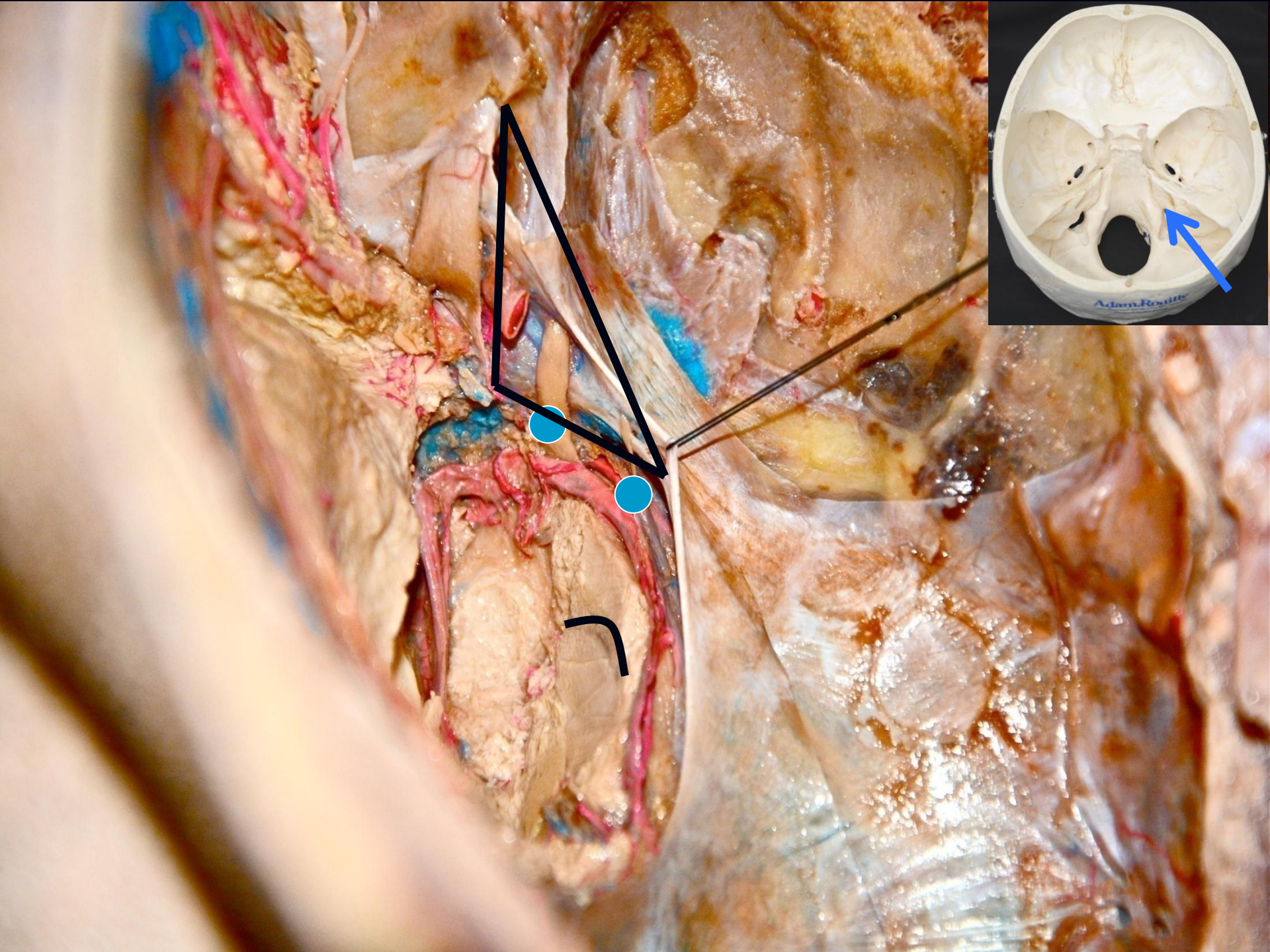




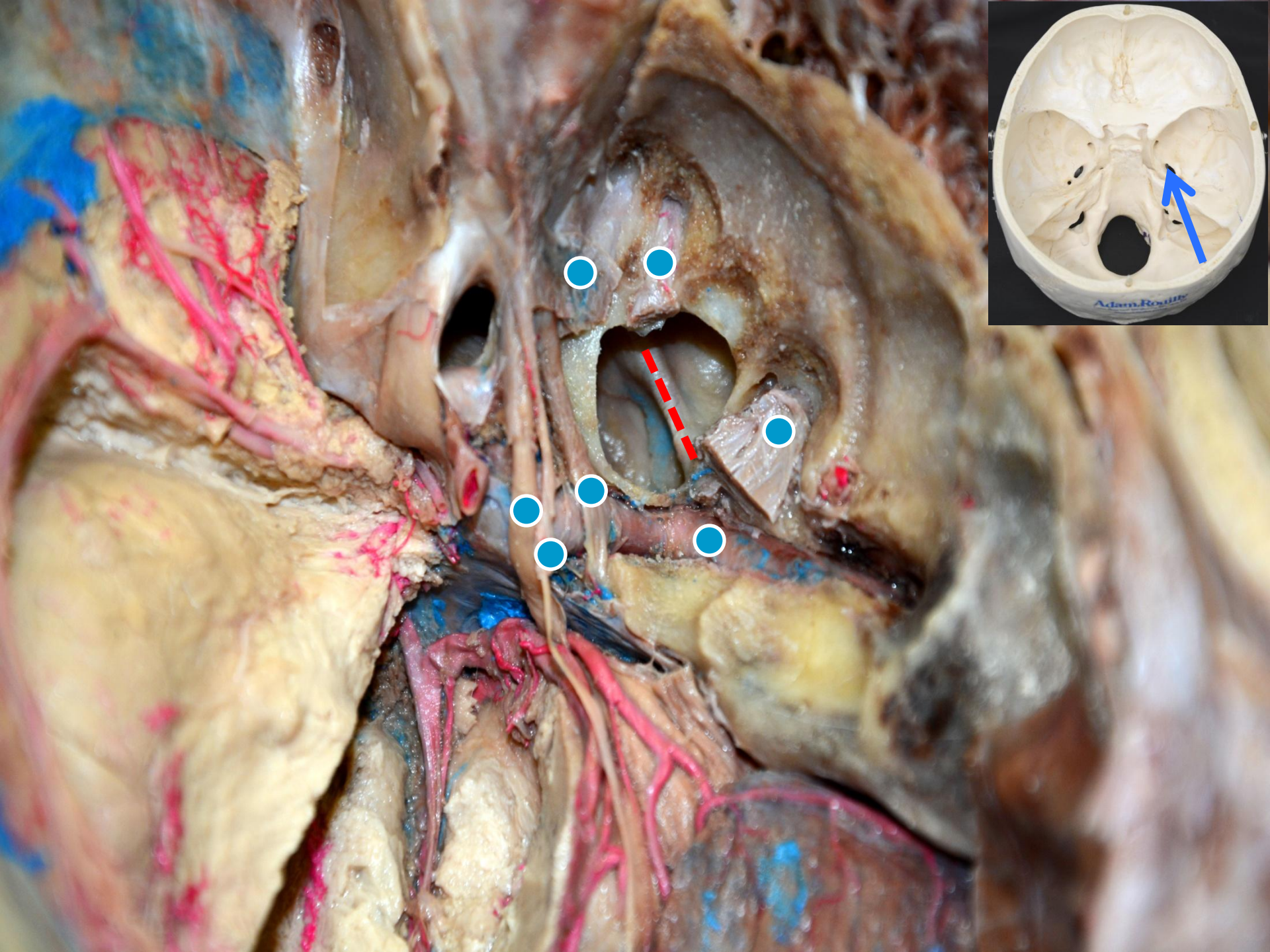




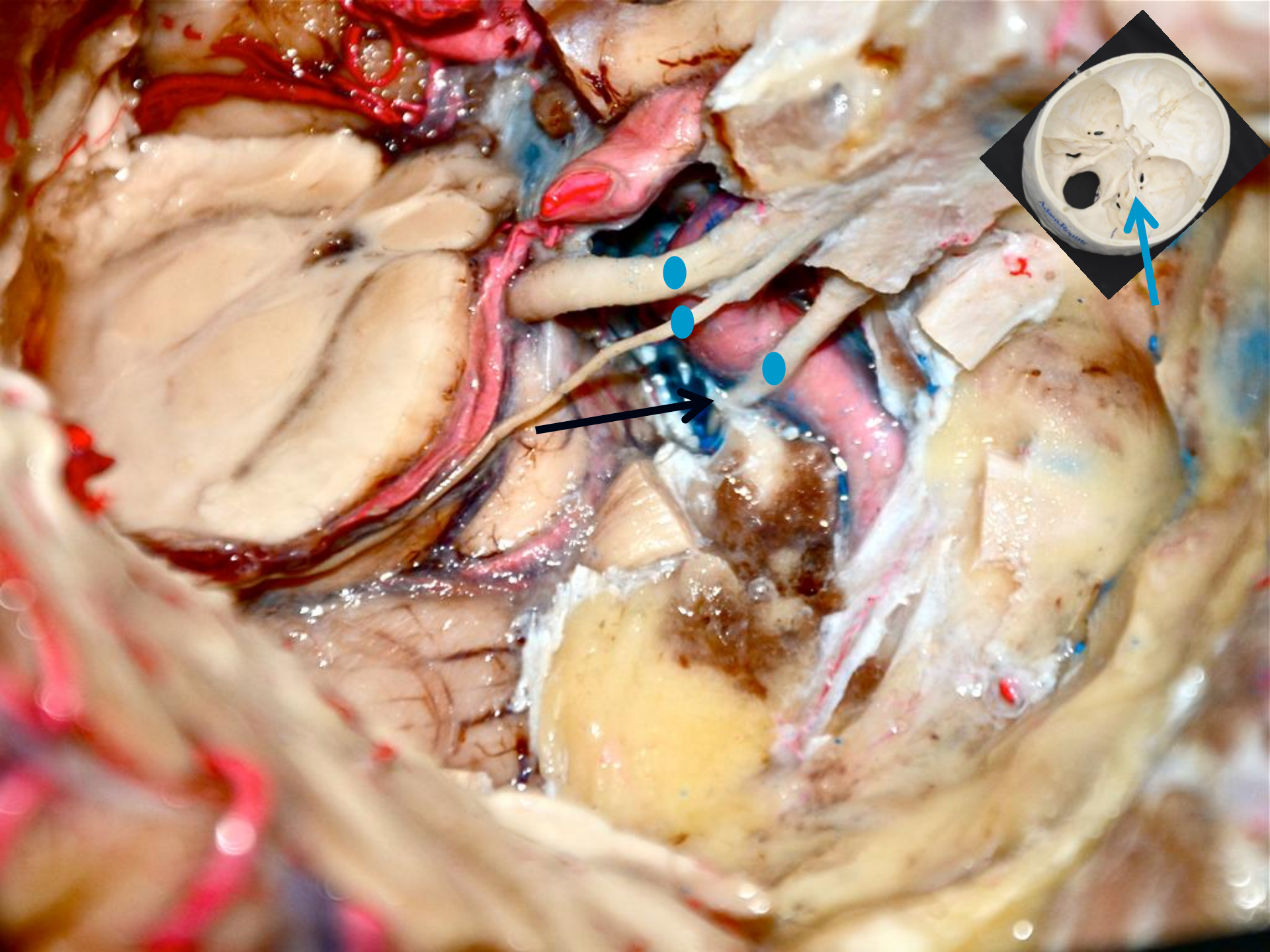




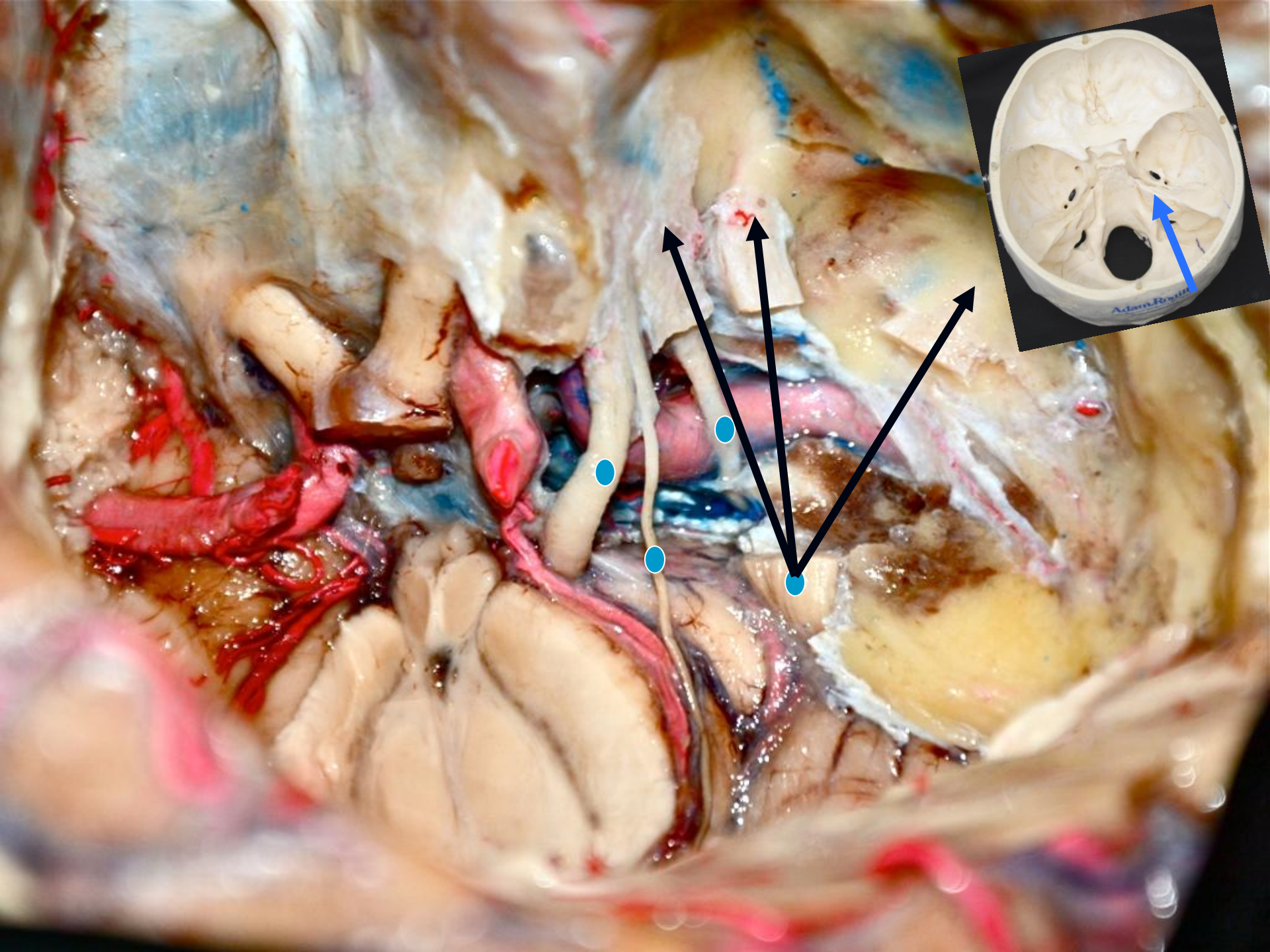




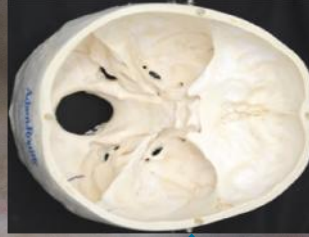




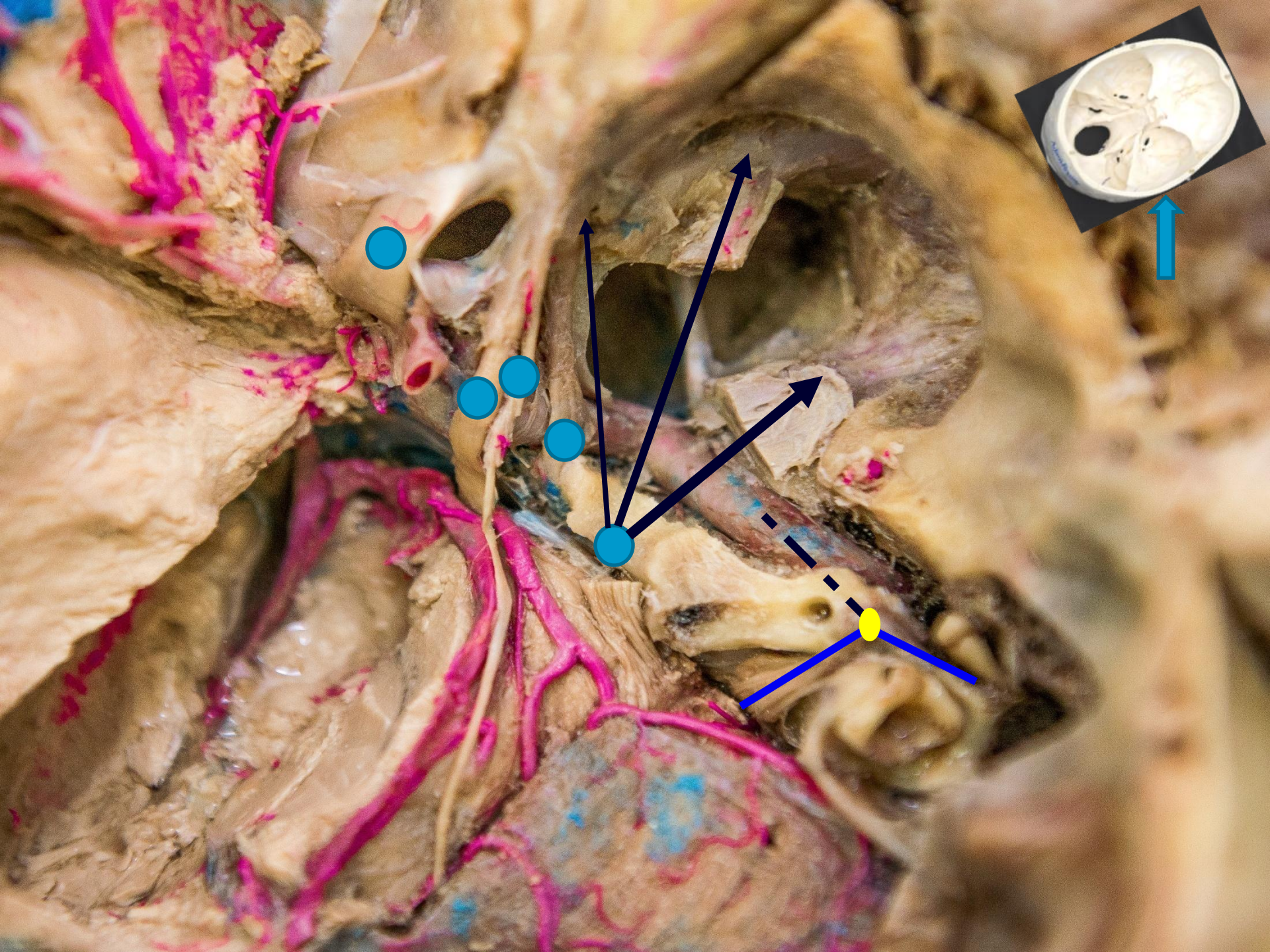














# ΣΥΜΠΕΡΑΣΜΑ

- Η χειρουργική ανατομία του Σηραγγώδους Κόλπου είναι το θεμέλιο πάνω στο οποίο βασίζεται κάθε επιτυχής χειρουργική επέμβαση.
- Η ισχυρή γνώση της ανατομίας αποτελεί βασική προϋπόθεση για την επιτυχή εφαρμογή των προσπελάσεων στην περιοχή αυτή.



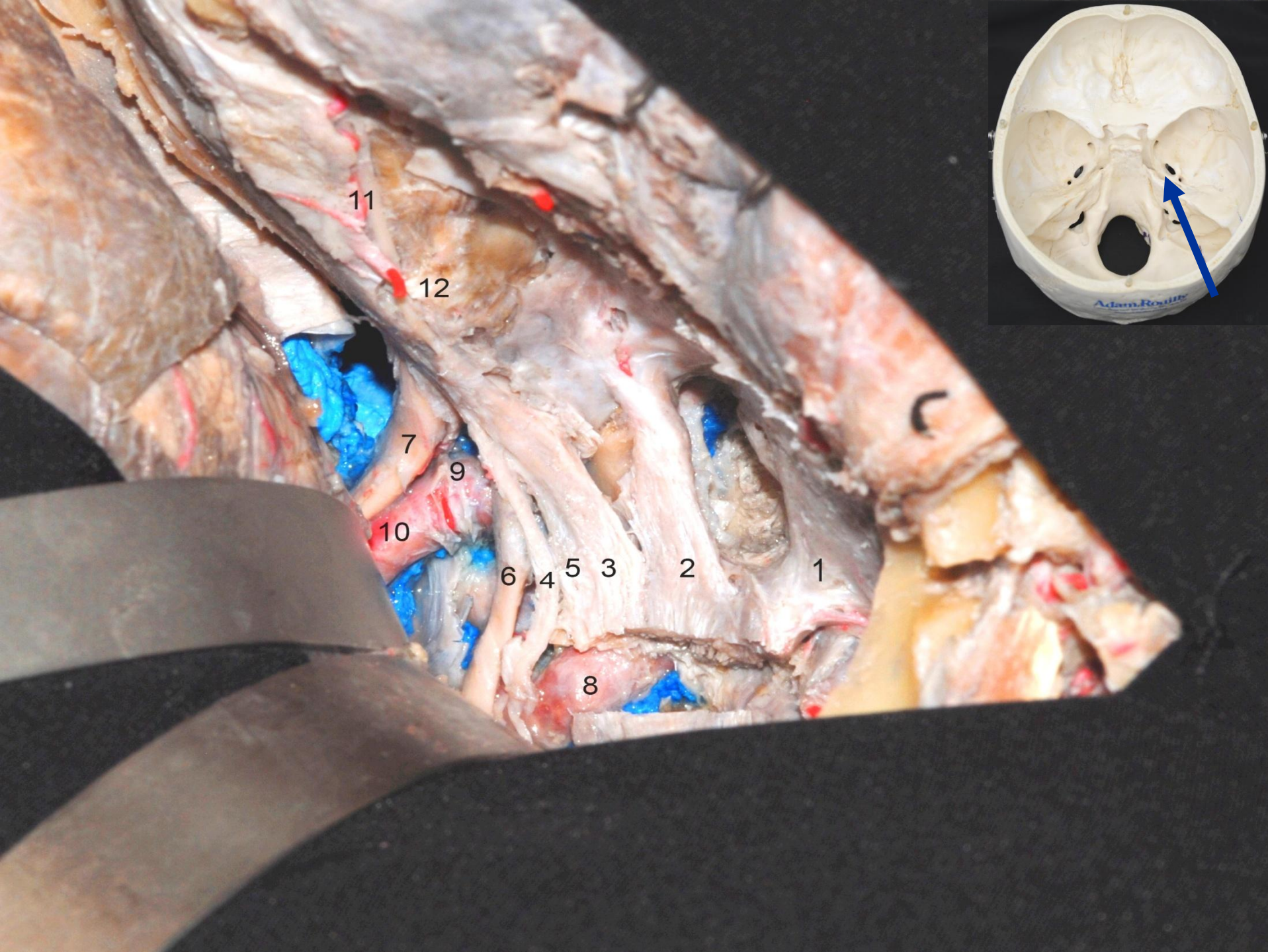




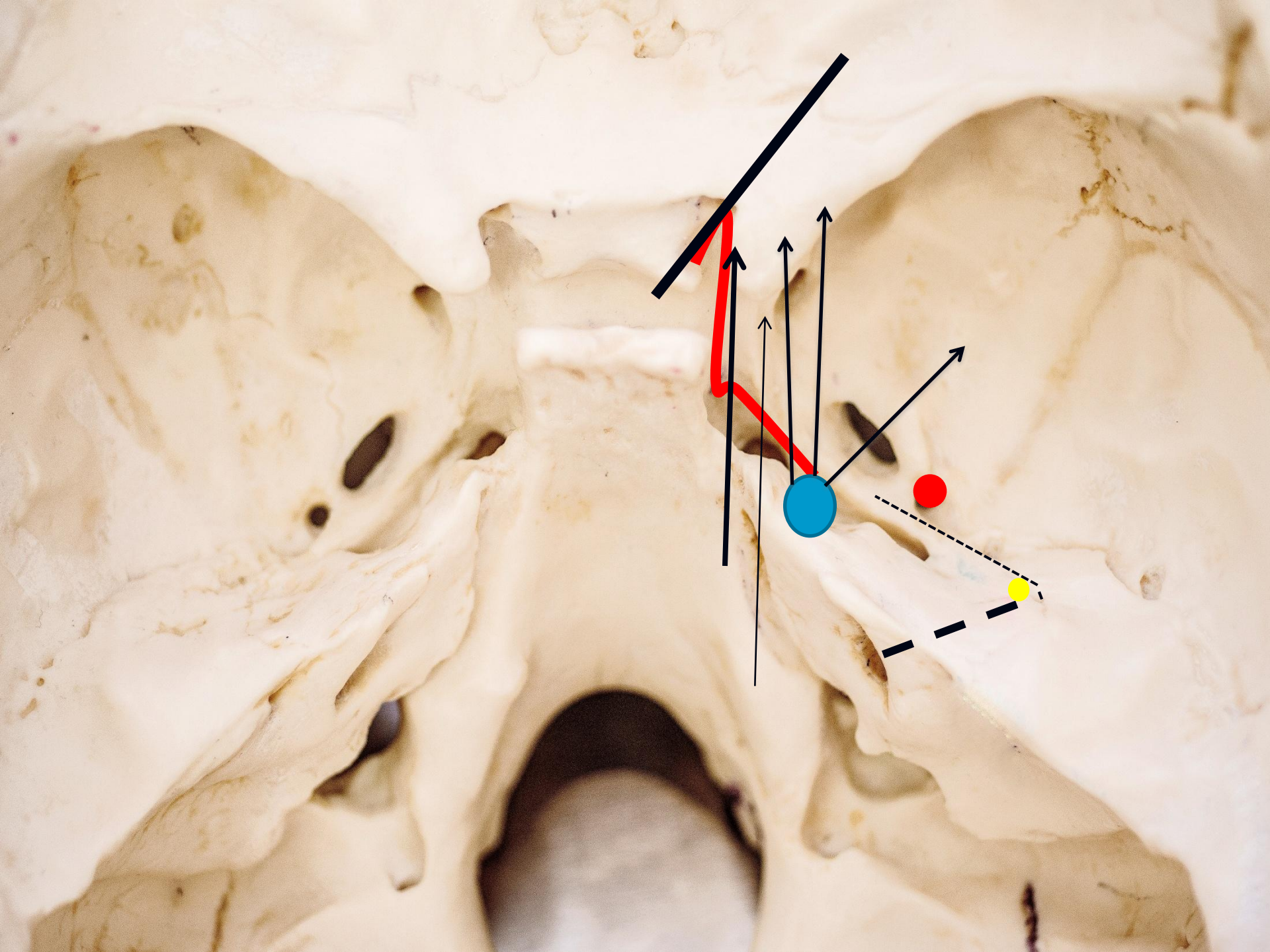
# Triangles

- ANTEROMEDIAL
- MEDIAL
- SUPERIOR
- LATERAL
- POSTEROLATERAL
- POSTEROMEDIAL
- POSTEROINFERIOR
- ANTEROLATERAL
- FAR-LATERAL

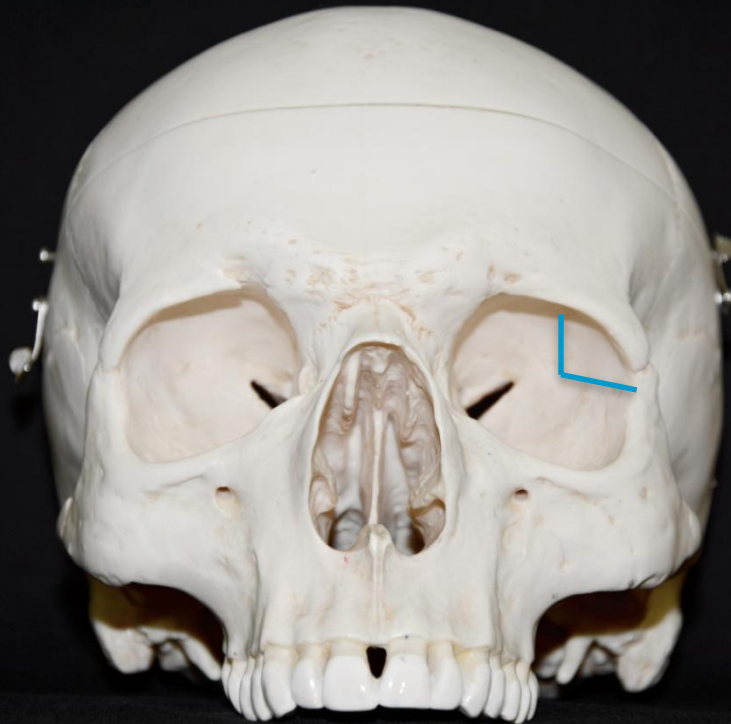
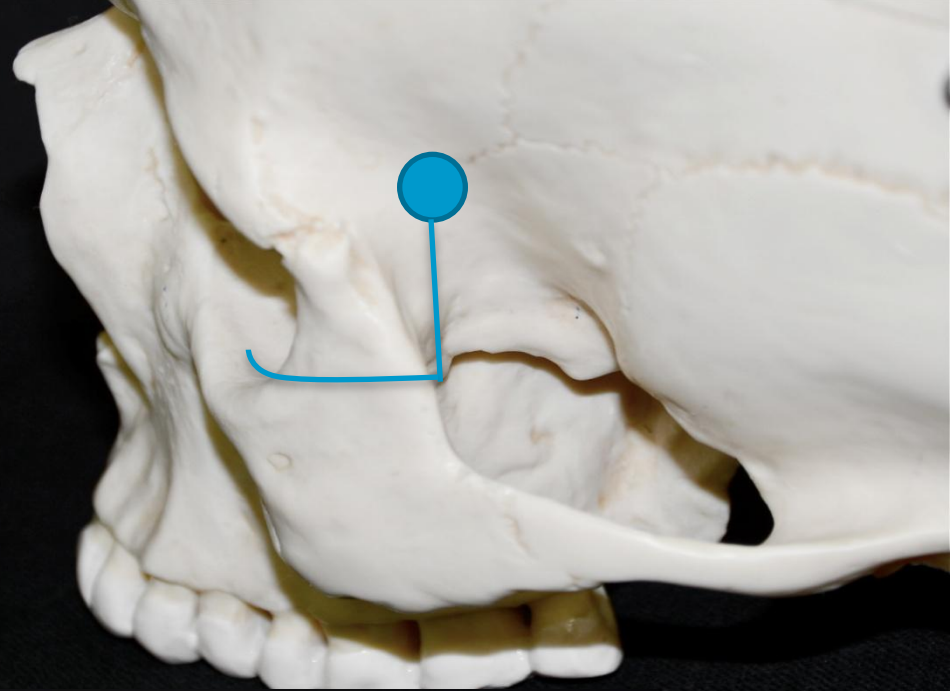
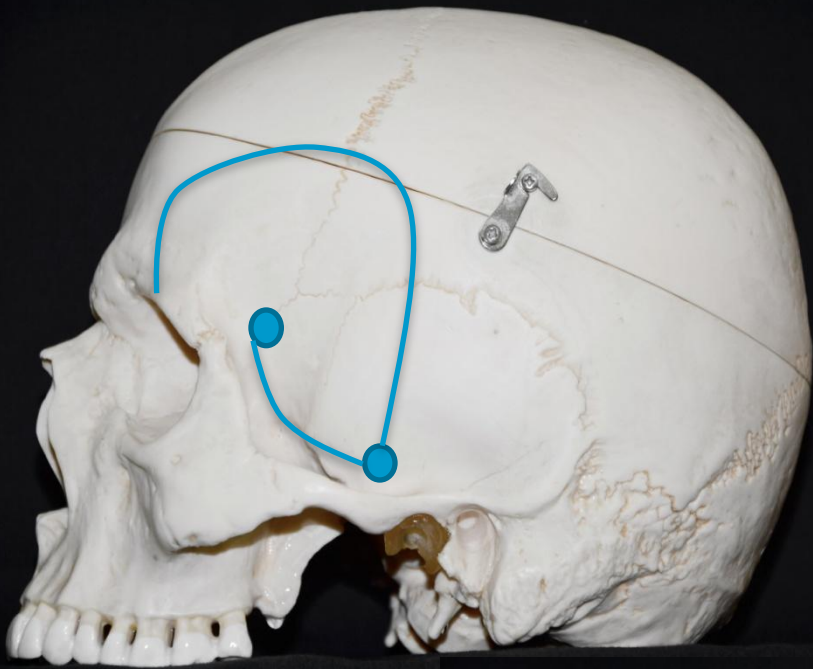














# Meningeal architecture of Cavernous Sinus

Meningeal architecture of Cavernous Sinus. Clinical and surgical implication

Kawase Takeshi M

Neurosurgery September 1996 Volume 39 Issue 3

