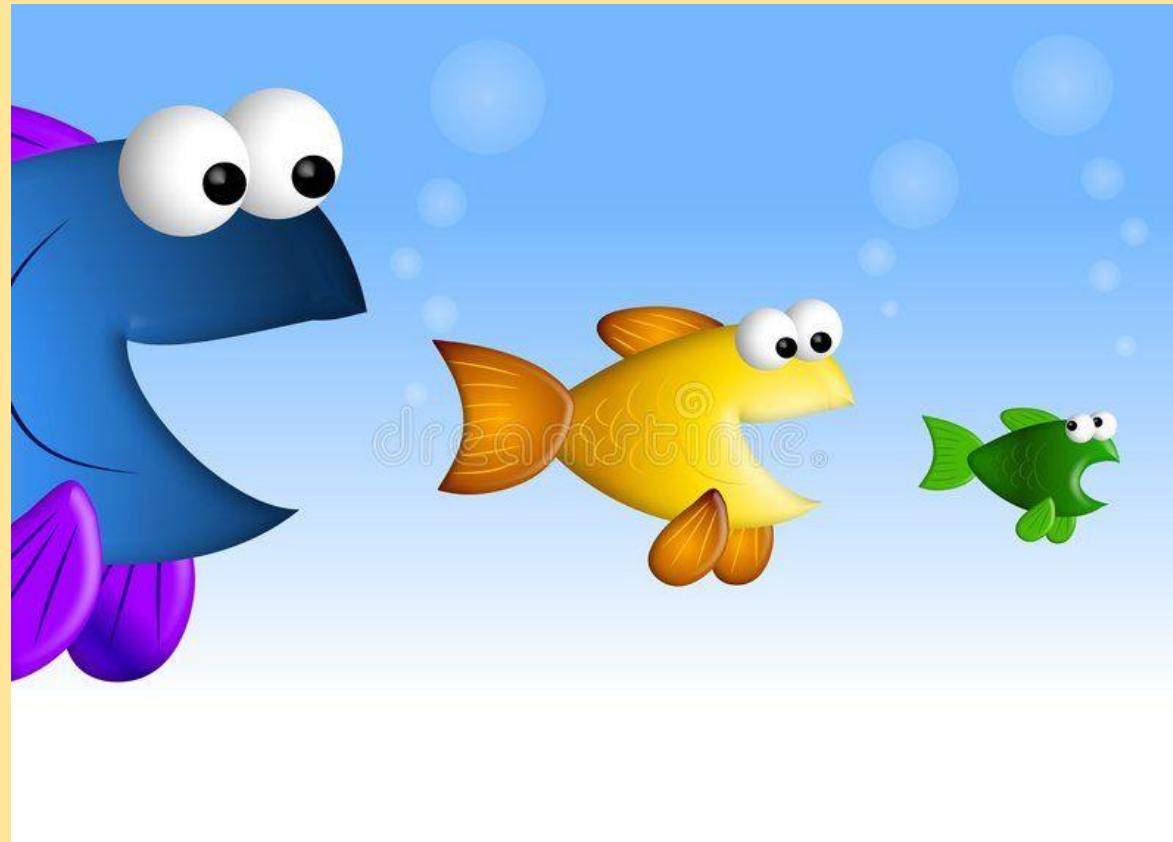


THE FACTOR OF SIZE



THE LARGEST MEMBER-STATES

(population over 20 million)

EU TOTAL POPULATION: 449.2 million

Germany + France = 33.8%, Biggest 4 = 57.7%

MEMBER-STATE	POPULATION (millions)	% TOTAL EU POPULATION
GERMANY	83.4	18.6
FRANCE	68.4	15.2
ITALY	58.9	13.1
SPAIN	48.6	10.8
POLAND	36.6	8.1
TOTAL	295.9	65.8

Source: Eurostat figures for 1 Jan 2024

THE MEDIUM-SIZED STATES

(population of 10-20 million)

Big jump from Poland 36.6m to Romania 19.1m

MEMBER-STATE	POPULATION (millions)	% TOTAL EU POPULATION
ROMANIA	19.1	4.3
NETHERLANDS	17.9	4.0
BELGIUM	11.8	2.6
CZECH REPUBLIC	10.9	2.4
PORTUGAL	10.6	2.4
SWEDEN	10.5	2.3
GREECE	10.4	2.3
TOTAL	91.2	20.3

Source: Eurostat figures for 1 Jan 2024

THE SMALL MEMBER-STATES

(population below 10 and above 5 million)

MEMBER-STATE	POPULATION (millions)	% TOTAL EU POPULATION
HUNGARY	9.6	2.1
AUSTRIA	9.2	2.0
BULGARIA	6.4	1.4
DENMARK	5.9	1.3
FINLAND	5.6	1.2
SLOVAKIA	5.4	1.2
IRELAND	5.3	1.2
TOTAL	47.4	10.4

Source: Eurostat figures for 1 Jan 2024

VERY SMALL MEMBER-STATES

(population below 4 million)

8 smallest states together have 17% of Germany's population

MEMBER-STATE	POPULATION (millions)	% TOTAL EU POPULATION
CROATIA	3.9	0.9
LITHUANIA	2.9	0.6
SLOVENIA	2.1	0.5
LATVIA	1.9	0.4
ESTONIA	1.4	0.3
CYPRUS	0.9	0.2
LUXEMBOURG	0.7	0.1
MALTA	0.6	0.1
TOTAL	14.4	3.1

Source: Eurostat data for 1 Jan 2024